

# Heavy Duty Mounts and Assemblies

Heavy duty mounts help secure wire, cable and hose bundles making installation more efficient and cost effective. Panduit heavy-duty cable ties and mounts are made of rugged, highly durable materials; ideal for trains, subways, heavy equipment, trucks and buses. The Wide Strap Extra Heavy cable tie has a strong 120 lbs. loop tensile strength to provide secure support for even high load applications.



Key Features	Benefits
<b>Versatile Material</b>	New Nylon 6/6 material is heat stabilized (115°C), UV weather resistant, and impact modified
<b>Simplifies Assembly Process</b>	Extra Heavy Tie Mounts available pre-assembled with the Pan-Ty® Wide Strap Extra Heavy Cable Ties
<b>Maximized Stability</b>	Unique design allows maximum stability for large diameter and heavy cable bundles

## Ordering information

### High and Medium Duty Torque Mounts

A retention tab within the mount bolt hole creates interference to hold the bolt in different positions without any external assistance.



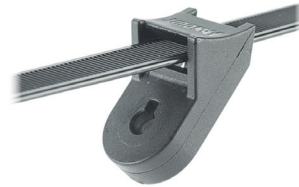
Part Number	Used with Cable Ties‡	Material	Torque (ft-lbs)	Color	Environment	Mounting Method	Std. Pkg. Qty.	Std. Ctn. Qty.
TMEH4S8-D350	M, I, S, HS, LH, H, EH, WS	Impact modified heat stabilized weather resistant nylon 6.6 with zinc plated steel insert	114	Black	Outdoors or Indoors	5/16" (8mm) bolt	500	-
TMEH4S10-D350						3/8" (10mm) bolt		
TMEH4S13-D350						1/2" (13mm) bolt		
TMEH3S8-D350		Impact modified heat stabilized weather resistant nylon 6.6	40			5/16" (8mm) bolt		1000
TMEH3S10-D350						3/8" (10mm) bolt		
TMEH3S13-D350						1/2" (13mm) bolt		

# Heavy Duty Mounts and Assemblies

## Extra Heavy Tie Mounts and Assemblies with Wide Strap Cable Ties

Extra-heavy screw applied cable tie mounts

Available with Pan-Ty Wide Strap Extra Heavy cable ties pre-assembled with mount



Part Number	Used with Cable Ties‡	Material	Color	Environment	Mounting Method	Std. Pkg. Qty.	Std. Ctn. Qty.
TMEH2S5-D350	M, I, S, HS, LH, H, EH	Impact modified heat stabilized weather resistant nylon 6.6	Black	Outdoors or Indoors	#10 (M5) Screw	500	2000
TMEH2S6-D350					1/4 (M6) Screw	500	2000
TMEH2S8-D350					5/16 (M8) Screw	500	2000
TMEH2S5-3E-C350	PLWS3EH-TL350 Wide Strap Cable Tie pre-installed				#10 (M5) Screw	100	1000
TMEH2S6-3E-C350					1/4 (M6) Screw	100	1000
TMEH2S8-3E-C350					5/16 (M8) Screw	100	1000

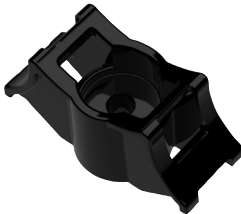
‡Cable Tie Cross Section: M = Miniature, I = Intermediate, S = Standard, LH = Light-Heavy, H = Heavy, and EH = Extra Heavy

## Bolt-On Stud Mounts

Manage three bundles with one mount that is either bolted to a surface or installed on a threaded stud.

Bolt-on design allows the bolt to extend beyond the height of the part.

Bolt-on design style product has suitable mechanical strength to resist 120 ft-lbs of torque that is applied on the bolt.



Part Number	Used with Cable Ties‡	Material	Color	Environment	Mounting Method	Std. Pkg. Qty.	Std. Ctn. Qty.
TMSTEHS6B-D350	M, I, S, HS, LH, H, EH, WS	Impact modified heat stabilized weather resistant nylon 6.6	Black	Outdoors or Indoors	Bolt-On 1/4" stud dia. (6mm)	500	-
TMSTEHS8B-D350					Bolt-On - 5/16" stud dia. (8mm)		

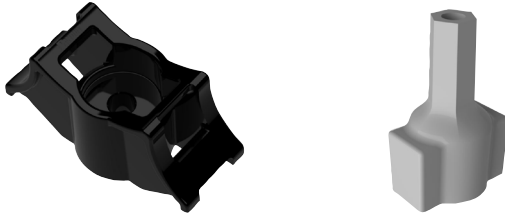
# Heavy Duty Mounts and Assemblies

## Stud Mounts

Manage three bundles with one mount that is either bolted to a surface or installed on a threaded stud.

Twist-on stud mount design has a stopping feature that

insures the part reaches a fixed stopping point on the bolt and does not allow the stud to protrude into the area where the bundle would mount.



Part Number	Used with Cable Ties‡	Material	Color	Environment	Mounting Method	Std. Pkg. Qty.	Std. Ctn. Qty.
TMSTEHS5-D350	M, I, S, HS, LH, H, EH, WS	Impact modified heat stabilized weather resistant nylon 6.6	Black	Outdoors or Indoors	Twist-on - 5mm stud dia.	500	-
TMSTEHS6-D350					Twist-on - 1/4" stud dia. (6mm)		
TMSTEHS8-D350					Twist-on - 5/16" stud dia. (8mm)		
TMSTEHS10-D350					Twist-on - 3/8" stud dia. (10mm)		
TMSTEHS11-D350					Twist-on - 7/16" stud dia. (11mm)		
TMSTEHS12-D350					Twist-on - 12mm stud dia.		
TMSTEHS13-D350					Twist-on - 1/2" stud dia. (13mm)		
TMSTEHS16-D350					Twist-on - 5/8" stud dia. (16mm)		
TMSTEHS19-D350					Twist-on - 3/4" stud dia. (19mm)		
TMST-TOOL					Tool used to install Twist-On Stud Mounts with user supplied drill.		

## Legacy Stud Mounts

Manage three bundles with one mount that is either bolted to a surface or installed on a threaded stud.

Twist-on stud mount design has a stopping feature that

insures the part reaches a fixed stopping point on the bolt and does not allow the stud to protrude into the area where the bundle would mount.



Part Number	Used with Cable Ties‡	Material	Color	Environment	Mounting Method	Std. Pkg. Qty.	Std. Ctn. Qty.
TMSTLHS6-M0	M, I, S, HS, LH	Impact modified weather resistant nylon 6.6	Black	Outdoors or Indoors	1/4" stud dia. (6mm)	500	-
TMSTLHS8-M0	M, I, S, HS, LH, H				5/16" stud dia. (8mm)		
TMSTHS10-D0					3/8" stud dia. (10mm)		
TMSTHS11-D0					7/16" stud dia. (11mm)		
TMSTHS12-D0					12mm stud dia.		
TMSTHS13-D0					1/2" stud dia. (13mm)		
TMSTHS16-D0					5/8" stud dia. (16mm)		
TMSTHS19-D0					3/4" stud dia. (19mm)		

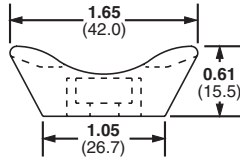
# Heavy Duty Mounts and Assemblies

## Ordering information

### Screw Applied Tie Mounts

Unique cradle design provides maximum stability for cable bundle

Route and support large diameter and heavy cable bundles



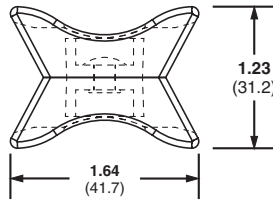
Part Number	Used with Cable Ties‡	Material	Color	Environment	Mounting Method	Std. Pkg. Qty.	Std. Ctn. Qty.
TMEH-S8-Q0	M, I, S, HS, LH, H, EH	Weather Resistant Nylon 6.6	Black	Outdoors	#8 (M4) Screw	25	250
TMEH-S10-Q0					#10 (M5) Screw	25	250
TMEH-S25-Q0					1/4 (M6) Screw	25	250
TMEH-S10-C100		Weather Resistant Polypropylene	Green	Indoors	#10 (M5) Screw	100	500
TMEH-S10-C109	Polypropylene	#10 (M5) Screw			100	500	

‡Cable tie cross section sizes: M = Miniature, I = Intermediate, S = Standard, HS = Heavy-Standard, LH = Light-Heavy, H = Heavy, EH = Extra-Heavy.

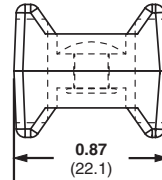
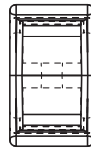
### Swivel Mounts

The two mounts are securely fastened together with a connecting rivet that allows both mounts to rotate  
Can join bundles of cable, tubing, or hoses that may need to move or are not parallel

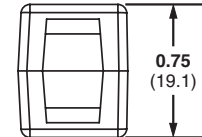
Separates bundles to avoid abrasion  
Material: Weather Resistant Nylon 6.6



TMEH



TM3



Part Number	Used with Cable Ties‡	Pull Apart Force		Color	Environment	Std. Pkg. Qty.	Std. Ctn. Qty.
		Lbs.	g				
TM3-X2-C0Y	M, I, S, HS, LH	120	54,431	Black	Indoors/Outdoors	100	1000
TMEH-X2-L0Y	M, I, S, HS, LH, H, EH	250	113,398			50	500

‡Cable tie cross section sizes: M = Miniature, I = Intermediate, S = Standard, HS = Heavy-Standard, LH = Light-Heavy, H = Heavy, EH = Extra-Heavy.

#### WORLDWIDE SUBSIDIARIES AND SALES OFFICES

PANDUIT US/CANADA  
Phone: 800.777.3300

PANDUIT EUROPE LTD.  
London, UK  
cs-emea@panduit.com  
Phone: 44.20.8601.7200

PANDUIT SINGAPORE PTE. LTD.  
Republic of Singapore  
cs-ap@panduit.com  
Phone: 65.6305.7575

PANDUIT JAPAN  
Tokyo, Japan  
cs-japan@panduit.com  
Phone: 81.3.6863.6000

PANDUIT LATIN AMERICA  
Guadalajara, Mexico  
cs-la@panduit.com  
Phone: 52.33.3777.6000

PANDUIT AUSTRALIA PTY. LTD.  
Victoria, Australia  
cs-aus@panduit.com  
Phone: 61.3.9794.9020

For a copy of Panduit product warranties, log on to [www.panduit.com/warranty](http://www.panduit.com/warranty)

For more information

Visit us at [www.panduit.com](http://www.panduit.com)

Contact Customer Service by email: [cs@panduit.com](mailto:cs@panduit.com)  
or by phone: 800.777.3300

**PANDUIT**<sup>®</sup>

©2019 Panduit Corp.  
ALL RIGHTS RESERVED.  
CMCB03--SA-ENG  
7/2019