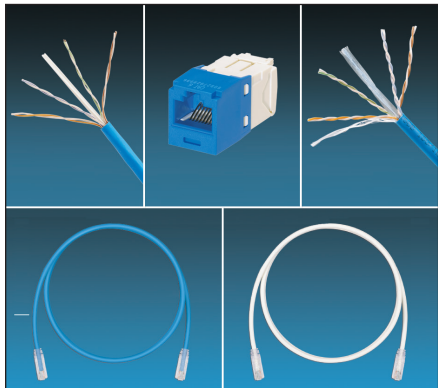


Category 6 UTP Copper Cabling System Selection Guide

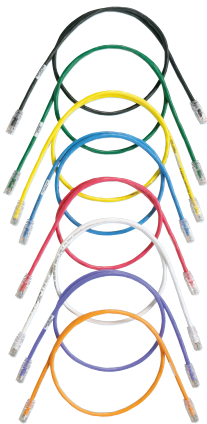


System requirements:

- Category 6 Copper Cabling Systems provides headroom assurance that exceed requirements of ANSI/TIA-568-C.2 Category 6, and ISO 11801 Class E channel standards
- Jack modules are 100% tested to ensure NEXT and RL performance and are individually serialized for traceability; utilize patent-pending enhanced Giga-TX™ Technology for jack terminations; optimizes performance by maintaining cable pair geometry and eliminating conductor untwist
- Patch cords are 100% performance tested and wired T568B; constructed of 24 or 28 AWG stranded, UTP copper cable and modular plugs for superior performance; nominal cable diameter is 0.235 in (6.0mm) for 24 AWG and 0.150 in (3.8mm) for 28 AWG
- Modular patch panels accept all Mini-Com® Modules; angled patch panels facilitate proper bend radius control and minimize the need for horizontal cable managers



CJ688TGIW



CPPA48HDWBLY



CPP48HDEWBL

Part Number	Part Description	Std. Pkg. Qty.	Std. Ctn. Qty.
Jack Module			
CJ688TGIW*	Category 6 Mini-Com® TX6™ PLUS UTP Jack Module.	1	10
Keyed Jack Module			
CJK688TGBU	Category 6 Mini-Com® TX6™ PLUS UTP, Keyed, Jack Module.	1	10
Right Angle Jack Module			
CJR688TG**	Category 6 Mini-Com® TX6™ Plus UTP Right Angle Jack Module.	1	10
Shuttered Jack Module			
CJH688TG**	Category 6 Mini-Com® TX6™ Plus UTP Shuttered Jack Module.	1	10
28/30AWG Jack Module			
CJT688TG**	Category 6 Mini-Com® TX6™ Plus UTP 28/30AWG Jack Module.	1	10
Corrosive Resistant Jack Module			
CJE688TG**	Category 6 Mini-Com® TX6™ Plus UTP Corrosive Resistant Jack Module.	1	10
UTP Patch Cord			
UTPSP**Y	Category 6, 24 AWG UTP patch cord with TX6™ Modular Plugs on each end.	1	10
28 AWG UTP Patch Cord			
UTP28SP**	Category 6, 28 AWG, UTP patch cord with TX6™ Modular Plugs on each end.	1	10
Keyed UTP Patch Cord			
UTPKSP**	Category 6, 24 AWG keyed, UTP patch cord with TX6™ PLUS Keyed Modular Plug on one end and TX6™ PLUS Non-Keyed Modular Plug on the other end.	1	10
Angled Modular Patch Panels			
CPPA48HDWBLY	48-port, angled, modular patch panel with rear mounted faceplates. 1 RU.	1	10
CPPA24FMWBLY	24-port, angled, flush mount patch panel supplied with rear mounted faceplates. 1 RU.	1	10
CPPA48HDEWBL	48-port, angled, high density modular patch panel with enhanced labeling features. 1 RU.	1	10
CPPA48FMWBLY	48-port, angled, flush mount patch panel supplied with rear mounted faceplates. 2 RU	1	10
Flat Modular Patch Panels			
CPP48HDWBLY	48-port, high density modular patch panel with rear mounted faceplates. 1 RU.	1	10
CPP24FMWBLY	24-port flush mount patch panel supplied with rear mounted faceplates. 1 RU.	1	10
CPP48HDEWBL	48-port, high density modular patch panel with enhanced labeling features. 1 RU.	1	10
CPP48FMWBLY	48-port flush mount patch panel supplied with rear mounted faceplates. 2 RU.	1	10

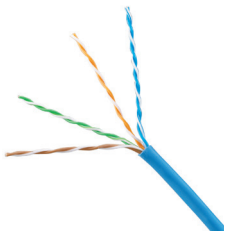
*Contact Customer Service or visit www.panduit.com for available standard module colors and/or patch cord colors and lengths.

^One rack space = 1.75" (44.45mm).

Category 6 UTP Copper Cabling System Selection Guide



Part Number*	Part Description	Flammability Rating	Color	Length	Region Availability
TX6500™ Premium Category 6 U/UTP Copper Cable					
PUP6504BU-UY	Category 6 premium, plenum (CMP), 4-pair, U/UTP copper cable. Conductors are 23 AWG construction with FEP insulation, twisted in pairs, separated by an integrated pair divider and protected by a low smoke, flame-retardant PVC (CMP) jacket.	CMP	Blue	1,000 ft./ 305m	North America
PUR6504BU-UY	Category 6 premium, riser, (CMR), 4-pair, U/UTP copper cable. Conductors are 23 AWG construction with polyolefin insulation, twisted in pairs, separated by an integrated pair divider and protected by a flame-retardant PVC (CMR) jacket.	CMR	Blue	1,000 ft./ 305m	North America

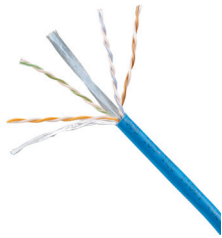


TX6000™ Enhanced Category 6 U/UTP Copper Cable					
PUP6004BU-W	Category 6 enhanced, plenum (CMP), 4-pair U/UTP copper cable. Conductors are 23 AWG construction with FEP/polyolefin insulation, twisted in pairs, separated by an integrated pair divider and protected by a low smoke, flame-retardant PVC (CMP) jacket.	CMP	Blue	1,000 ft./ 305m	North America
PUR6004BU-W	Category 6 enhanced, plenum (CMR), 4-pair U/UTP copper cable. Conductors are 23 AWG construction with FEP/polyolefin insulation, twisted in pairs, separated by an integrated pair divider, and protected by a flame-retardant PVC (CMR) jacket.	CMP	Blue	1,000 ft./ 305m	North America
PUL6004WH-FE	Category 6 enhanced, low smoke zero halogen, (LSZH-1), 4-pair U/UTP copper cable. Conductors are 23 AWG construction with polyethylene insulation, twisted in pairs, separated by an integrated pair divider and protected by a flame-retardant (LSZH-1) jacket.	LSZH-1	White	1,000 ft./ 305m	Latin America, Asia Pacific
PUL6004WH-KE	Category 6 enhanced, low smoke zero halogen (LSZH-1) 4-pair copper cable. Conductors are 23 AWG construction with polyethylene insulation, twisted in pairs, separated by an integrated pair divider and protected by a flame-retardant (LSZH-1) jacket.	LSZH-1	White	1,000 ft./ 305m	EMEA
PUZ6004WH-CEG	Category 6 enhanced, low smoke zero halogen (LSZH-3), 4-pair U/UTP copper cable. Conductors are 23 AWG construction with polyethylene insulation, twisted in pairs, separated by an integrated pair divider, and protected by a flame-retardant (LSZH-3) jacket.	LSZH-3	White	1,000 ft./ 305m	Latin America, Asia Pacific, EMEA
PUC6004BU-FE	Category 6 enhanced, (CM), 4-pair U/UTP copper cable. Conductors are 23 AWG construction with polyolefin insulation, twisted in pairs, separated by an integrated pair divider, and protected by a flame-retardant PVC (CM) jacket.	CM	Blue	1,000 ft./ 305m	Latin America, Asia Pacific, EMEA
PUR6004BU-FE	Category 6, riser (CMR), 4-pair, U/UTP copper cable. Conductors are 23 AWG construction with polyolefin insulation, twisted in pairs, separated by an integrated pair divider, and protected by a flame-retardant PVC (CMR) jacket.	CMR	Blue	1,000 ft. / 305m	Latin America, Asia Pacific

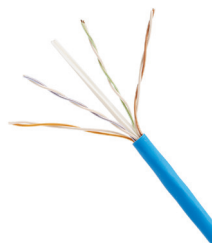
*Contact Customer Service for region availability and other cable colors.

(continued on next page)

Category 6 UTP Copper Cabling System Selection Guide



Part Number*	Part Description	Flammability Rating	Color	Length	Region Availability
TX6™ Category 6 U/UTP Copper Cable					
PUP6C04BU-U	Category 6, plenum (CMP), 4-pair, U/UTP copper cable. Conductors are 23 AWG construction with FEP/polyolefin insulation, twisted in pairs, separated by a tape, and protected by a low smoke, flame-retardant PVC (CMP) jacket.	CMP	Blue	1,000 ft./ 305m	North America
PUR6C04BU-U	Category 6, riser (CMR), 4-pair, U/UTP copper cable. Conductors are 23 AWG construction with polyolefin insulation, twisted in pairs, separated by a tape, and protected by a flame-retardant PVC (CMR) jacket.	CMR	Blue	1,000 ft./ 305m	North America
PUL6C04WH-CE	Category 6 enhanced, low smoke zero halogen (LSZH-1), 4-pair U/UTP copper cable. Conductors are 24 AWG construction with polyethylene insulation, twisted in pairs, separated by an integrated pair divider, and protected by a flame-retardant (LSZH-1) jacket.	LSZH-1	White	1,000 ft./ 305m	Latin America, Asia Pacific
PUL6C04WH-KE	Category 6 enhanced, low smoke zero halogen (LSZH-1), 4-pair U/UTP copper cable. Conductors are 24 AWG construction with polyethylene insulation, twisted in pairs, separated by an integrated pair divider, and protected by a flame-retardant (LSZH-1) jacket.	LSZH-1	White	1,000 ft./ 305m	EMEA
PUC6C04BU-CE	Category 6 enhanced, (CM), 4-pair U/UTP copper cable. Conductors are 24 AWG construction with polyolefin insulation, twisted in pairs, separated by an integrated pair divider, and protected by a flame-retardant PVC (CM) jacket.	CM	Blue	1,000 ft./ 305m	Latin America, Asia Pacific, EMEA
PUR6C04BU-C	Category 6, Riser (CMR), 4-pair, U/UTP copper cable. Conductors are 24 AWG construction with polyolefin insulation, twisted in pairs, separated by a tape, and protected by a flame-retardant PVC (CMR) jacket.	CMR	Blue	1,000 ft./ 305m	Latin America, Asia Pacific



TX6-28™ Category 6 28 AWG U/UTP Copper Cable					
PUP6C2804BU-U	Category 6, plenum (CMP), 4-pair, U/UTP copper cable. Conductors are 28 AWG construction with FEP/polyolefin insulation, twisted in pairs, separated by an integrated pair divider, and protected by a low smoke, flame-retardant PVC (CMP) jacket	CMP	Blue	1,000 ft./ 305m	North America
PUR6C2804BU-U	Category 6, riser (CMR), 4-pair, U/UTP copper cable. Conductors are 28 AWG construction with polyolefin insulation, twisted in pairs, separated by an integrated pair divider, and protected by a flame-retardant PVC (CMR) jacket.	CMR	Blue	1,000 ft./ 305m	North America
PUD6C2804BU-CE	Category 6, low smoke zero halogen (LSZH-1, LSZH-3) and (CM), 4-pair, U/UTP copper cable. Conductors are 28 AWG construction with polyethylene insulation, twisted in pairs and protected by a flame-retardant (LSZH-1, LSZH-3, CM) jacket.	LSZH-1 LSZH-3 CM	Blue	1,000 ft./ 305m	Latin America, Asia Pacific, EMEA

*Contact Customer Service for region availability and other cable colors.

WORLDWIDE SUBSIDIARIES AND SALES OFFICES

PANDUIT CANADA
Markham, Ontario
cs-cdn@panduit.com
Phone: 800.777.3300

PANDUIT EUROPE LTD.
London, UK
cs-emea@panduit.com
Phone: 44.20.8601.7200

PANDUIT SINGAPORE PTE. LTD.
Republic of Singapore
cs-ap@panduit.com
Phone: 65.6305.7575

PANDUIT JAPAN
Tokyo, Japan
cs-japan@panduit.com
Phone: 81.3.6863.6000

PANDUIT LATIN AMERICA
Guadalajara, Mexico
cs-la@panduit.com
Phone: 52.33.3777.6000

PANDUIT AUSTRALIA PTY. LTD.
Victoria, Australia
cs-aus@panduit.com
Phone: 61.3.9794.9020

For a copy of Panduit product warranties, log on to www.panduit.com/warranty

For more information

Visit us at www.panduit.com

Contact Customer Service by email: cs@panduit.com
or by phone: 800-777-3300

©2017 Panduit Corp.
ALL RIGHTS RESERVED.
COSG13--WW-ENG
1/2017