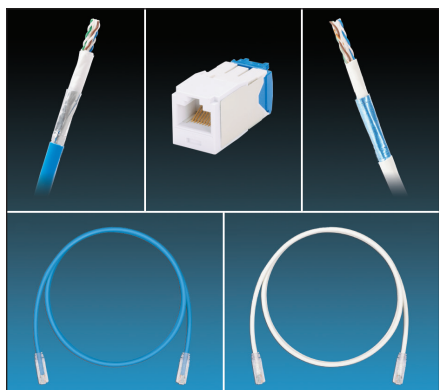


# TX6A™ 10Gig™ UTP Copper Cabling System with Advanced MaTriX Technology Selection Guide

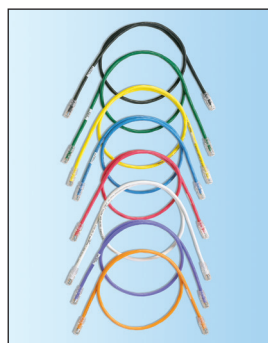


## System requirements:

- TX6A™ and TX6A-SD™ 10Gig™ UTP Copper Cabling Systems with MaTriX Technology provides headroom assurance that exceed requirements of ANSI/TIA-568-C.2 Category 6A, IEEE 802.3an-2006, and ISO 11801 Class E<sub>A</sub> channel standards
- Jack modules are 100% tested to ensure NEXT and RL performance and are individually serialized for traceability; utilize patent-pending enhanced Giga-TX™ Technology for jack terminations; optimizes performance by maintaining cable pair geometry and eliminating conductor untwist
- Patch cords are 100% performance tested and wired T568B; constructed of 24 or 26 AWG stranded, UTP copper cable and modular plugs for superior performance; nominal cable diameter is 0.275 in. (7.0mm) for 24 AWG and 0.240 in. (6.1mm) for 26 AWG
- Modular patch panels accept all Mini-Com® Modules; angled patch panels facilitate proper bend radius control and minimize the need for horizontal cable managers



CJ6X88TGIW



CPPA48HDWBLY



CPP48HDEWBL

Part Number	Part Description	Std. Pkg. Qty.	Std. Ctn. Qty.
<b>Jack Module</b>			
CJ6X88TGIW*	Category 6A, RJ45, 10 Gb/s, 8-position, 8-wire universal module. Includes patented MaTriX split foil tape.	1	50
<b>Keyed Jack Module</b>			
CJK6X88TGBL*	Keyed, Category 6A, RJ45, 10 Gb/s, 8-position, 8-wire universal module. Includes patented MaTriX split foil tape.	1	50
<b>TX6A™ 10Gig™ UTP Patch Cord</b>			
UTP6A3*	Category 6A, 24 AWG, 10 Gb/s UTP patch cord with TX6A™ 10Gig™ Modular Plugs on each end. Includes patented MaTriX Tape Technology.	1	10
<b>TX6A-SD™ 10Gig™ UTP Patch Cord</b>			
UTP6ASD3*	Category 6A (SD), 26 AWG, 10 Gb/s UTP patch cord with TX6A™ 10Gig™ Modular Plugs on each end. Includes patented MaTriX Tape Technology.	1	50
<b>Keyed TX6A™ 10Gig™ UTP Patch Cord</b>			
UTPK6A3BL*	Keyed, Category 6A, 24 AWG, 10 Gb/s UTP patch cord with TX6A™ 10Gig™ Keyed Modular Plug on one end and TX6A™ 10Gig™ Non-Keyed Modular Plug on the other end. Includes patented MaTriX Tape Technology.	1	10
<b>Mini-Com® Angled Modular Patch Panels</b>			
CPPA48HDWBLY	48-port, angled, modular patch panel with rear mounted faceplates. 1 RU.	1	10
CPPA72FMWBLY	72-port, angled, flush mount modular patch panels with rear mounted faceplates. 2 RU.	1	10
CPPA48HDEWBL	48-port, angled, high density modular patch panel with enhanced labeling features. 1 RU.	1	10
CPPA48HDVNSWBL	48-port, angled, high density modular patch panel with pre-printed vertical port numbering from top to bottom across panel. 1 RU.	1	10
<b>Mini-Com® Flat Modular Patch Panels</b>			
CPP48HDWBLY	48-port, high density modular patch panel with rear mounted faceplates. 1 RU.	1	10
CPP72FMWBLY	72-port, high density, flush mount modular patch panel with rear mounted faceplates. 2 RU.	1	10
CPP48HDEWBL	48-port, high density modular patch panel with enhanced labeling features. 1 RU.	1	10
CPP48HDVNSWBL	48-port, high density modular patch panel with pre-printed vertical port numbering from top to bottom across panel. 1 RU.	1	10

\*Contact Customer Service or visit [www.panduit.com](http://www.panduit.com) for available standard module colors and/or patch cord colors and lengths.

^One rack space = 1.75" (44.45mm).

## Advanced MaTriX Technology



PUP6AM04BU-UG  
and  
PUR6AM04BU-UG

Part Number	Part Description	Flammability Rating	Color	Length
<b>TX6A™ 10Gig™ UTP Copper Cable with Advanced MaTriX Technology</b>				
<b>PUP6AM04BU-UG*</b> <b>PUP6AM04BU-UGA*</b>	Category 6A, plenum, 4-pair, UTP copper cable with FEP insulation. Twisted pairs, 23 AWG, separated by an integrated pair divider, surrounded by Advanced MaTriX tape, protected by low-smoke flame-retardant PVC jacket. 0.275" (7.0mm) diameter.	CMP	Blue	1,000 ft./ 305m
<b>PUR6A04BU-UG*</b> <b>PUR6AM04BU-CG*</b>	Category 6A, riser, 4-pair, UTP copper cable with flame-retardant PE insulation. Twisted pairs, 23 AWG, separated by an integrated pair divider, surrounded by MaTriX tape, protected by a flame-retardant PVC jacket. .300" (7.6mm) diameter for the PUR6A04BU-UG .280" (7.1mm) diameter for the PUR6AM04BU-CG	CMR	Blue	1,000 ft./ 305m
<b>PUL6AM04WH-CEG*</b>	Category 6A, low smoke zero halogen, 4-pair, UTP copper cable with HDPE insulation. Twisted pairs, 23 AWG, separated by an integrated pair divider, surrounded by Advanced MaTriX tape, protected by a LSZH (IEC 60332-1) jacket. 0.280" (7.1mm) diameter.	LSZH-1	White	1,000 ft./ 305m
<b>PUZ6AM04WH-CEG*</b>	Category 6A, low smoke zero halogen, 4-pair, UTP copper cable with flame-retardant HDPE insulation. Twisted pairs, 23 AWG separated by an integrated pair divider, surrounded by Advanced MaTriX tape, protected by a LSZH (IEC 60332-3) jacket. 0.290" (7.4mm) diameter.	LSZH-3	White	1,000 ft./ 305m
<b>PUC6AM04BU-CEG*</b>	Category 6A, CM, 4-pair, UTP copper cable, Twisted pairs, 23 AWG, separated by an integrated pair divider, surrounded by Advanced MaTriX tape, protected by a PVC jacket. 0.285" (7.2mm) diameter.	CM	Blue	1,000 ft./ 305m

## MaTriX Technology



PUP6ASD04BU-UG  
and  
PUR6ASD04BU-CG

Part Number	Part Description	Flammability Rating	Color	Length
<b>TX6A-SD™ 10Gig™ UTP Copper Cable with MaTriX Technology – 70 meter channel solution</b>				
<b>PUP6ASD04BU-UG*</b>	Category 6A, plenum, 4-pair, UTP copper cable with FEP insulation. Twisted pairs, 26 AWG, separated by an integrated pair divider, surrounded by a patented MaTriX tape, protected by a low smoke flame-retardant PVC jacket. 0.240 in. (6.1mm) diameter.	CMP	Blue	1,000 ft./ 305m
<b>PUR6ASD04BU-CG*</b>	Category 6A, riser, 4-pair, UTP copper cable with flame-retardant PVC insulation. Twisted pairs, 26 AWG, separated by an integrated pair divider, surrounded by a patented MaTriX tape, protected by a flame-retardant PVC jacket. 0.240 in. (6.1mm) diameter.	CMR	Blue	1,000 ft./ 305m
<b>PUL6ASD04WH-EG*</b>	Category 6A, low smoke zero halogen, 4-pair, UTP copper cable with HDPE insulation. Twisted pair, 26 AWG, separated by an integrated pair divider, surrounded by a patented MaTriX tape, protected by a LSZH (IEC 60332-1) flame-retardant PVC jacket. 0.240 in. (6.1mm) diameter.	LSZH-1	White	1,000 ft./ 305m
<b>PUC6ASD04BU-EG*</b>	Category 6A, CM, 4-pair, UTP copper cable. Twisted pairs, 26 AWG, separated by an integrated pair divider, surrounded by a patented MaTriX tape, protected by a flame-retardant PVC jacket. 0.240 in. (6.1mm) diameter.	CM	Blue	1,000 ft./ 305m

\* Contact Customer Service for region availability and other cable colors.

### WORLDWIDE SUBSIDIARIES AND SALES OFFICES

PANDUIT CANADA  
Markham, Ontario  
cs-cdn@panduit.com  
Phone: 800.777.3300

PANDUIT EUROPE LTD.  
London, UK  
cs-emea@panduit.com  
Phone: 44.20.8601.7200

PANDUIT SINGAPORE PTE. LTD.  
Republic of Singapore  
cs-ap@panduit.com  
Phone: 65.6305.7575

PANDUIT JAPAN  
Tokyo, Japan  
cs-japan@panduit.com  
Phone: 81.3.6863.6000

PANDUIT LATIN AMERICA  
Guadalajara, Mexico  
cs-la@panduit.com  
Phone: 52.33.3777.6000

PANDUIT AUSTRALIA PTY. LTD.  
Victoria, Australia  
cs-aus@panduit.com  
Phone: 61.3.9794.9020

For a copy of Panduit product warranties, log on to [www.panduit.com/warranty](http://www.panduit.com/warranty)

For more information

Visit us at [www.panduit.com](http://www.panduit.com)

Contact Customer Service by email: [cs@panduit.com](mailto:cs@panduit.com)  
or by phone: 800-777-3300

**PANDUIT**®

©2017 Panduit Corp.  
ALL RIGHTS RESERVED.  
COSG08--WW-ENG  
01/04/2017