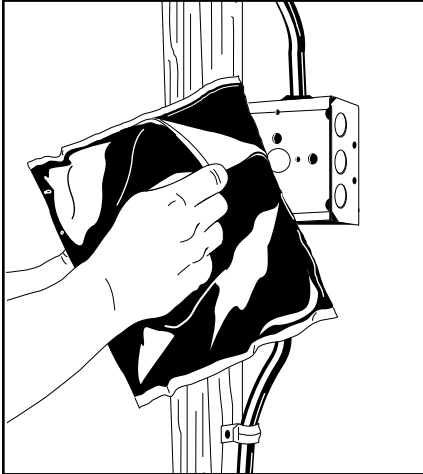




## SERIES SSP PUTTY PADS

### APPLICATIONS

SpecSeal® Putty Pads are used to seal around electrical boxes to reduce sound transmission (see Technical Update) and increase fire resistance.



### PRODUCT DESCRIPTION

SpecSeal® Putty Pad is a non-hardening endothermic compound designed to seal around electrical boxes to reduce sound transmission and protect against the spread of fire, smoke and toxic gasses.

Requiring no tools, SpecSeal® Putty Pads are soft and pliable making them easy to install by hand. Its aggressive adhesion makes them suitable for use with all common construction materials. SpecSeal® Putty Pads remain soft and easy to reuse or retrofit.

SpecSeal® Putty Pads are conveniently sized to fit a typical 1-1/2" (38mm) deep 4S box (Cat. No. SSP4S) and 2-1/8" deep 4S box (Cat. No. SSP9S) with no cutting or piercing required. Faced on both sides with a convenient poly liner, SpecSeal® Putty Pads are easily applied with no mess excessive residue.

#### FEATURES

- **Non-Hardening** = Easy retrofit!
- **Endothermic Fillers** absorb heat & release water.
- **Highly Adhesive** formula Stays put. Allows movement.
- **Soft & Pliable** for easy installation.
- **No Water-Soluble Expansion Ingredients** means better water resistance!
- **Sound Deadening!** Excellent sound attenuation properties. Reduces noise transmission.

### PHYSICAL PROPERTIES

#### PHYSICAL PROPERTIES

<b>Color:</b>	Red
<b>Odor:</b>	None
<b>Density:</b>	1.45 kg/L (12.08 lb/gal)
<b>Solids:</b>	100%
<b>In-Service Temp:</b>	-10°F (-23°C) - 120°F (49°C)
<b>Storage Temp:</b>	Less than 120°F (49°C)
<b>STC Rating:</b>	62 (Relates to specific construction) (ASTM E 90-04/ASTM C919)
<b>VOC Content**:</b>	0.00 lbs/gal (0.0g/L)
<b>Shelf Life:</b>	No Limit

\*\*ASTM D 3960 and EPA Federal Reference Method 24.

### PERFORMANCE

SpecSeal® Putty Pads have been tested to ASTM E814 (UL1479) and to UL263 (ASTM E119, NFPA251) and are classified for up to 2 hours as a Wall Opening Protective Material for use with both metallic and nonmetallic outlet or switch boxes installed in gypsum wallboard assemblies (steel and wood stud assemblies). Boxes protected with SpecSeal® Putty Pads have been successfully tested with box spacing reduced to less than 16" (406mm).



**SpecSeal® Putty**  
FILL, VOID OR CAVITY MATERIALS CERTIFIED FOR USE  
IN THROUGH-PENETRATION FIRESTOP SYSTEMS.  
SEE UL ONLINE CERTIFICATIONS DIRECTORY.

### SPECIFICATIONS

The firestopping putty shall be a one-part, non-hardening compound. The putty shall be soft and pliable with aggressive adhesion and shall not contain any water-soluble intumescent ingredients. The putty shall be UL Classified and tested to the requirements of ASTM E814 (UL1479) and to UL263 (ASTM E119, NFPA251).

#### SPECIFIED DIVISIONS

DIV.	7	07840	Through-Penetration Firestopping
DIV.	13	13900	Special Construction Fire Suppression & Supervisory Systems
DIV.	15	15250	Mechanical Insulation – Fire Protection
DIV.	16	16050	Basic Electrical Materials & Methods

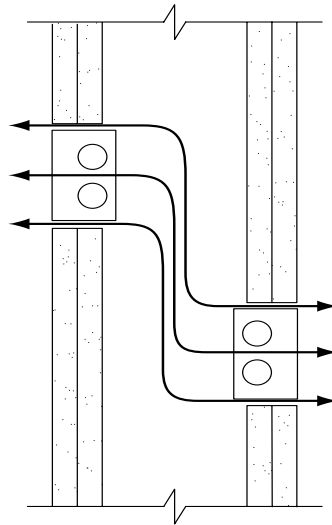


## INSTALLATION INSTRUCTIONS

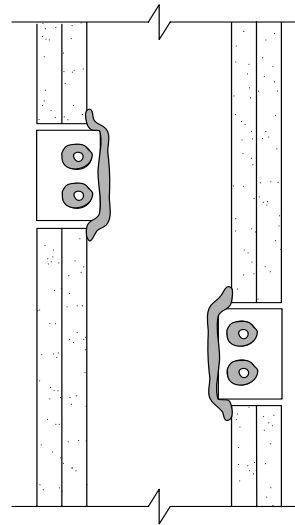
**PUTTY PADS:** SpecSeal® Firestop Putty Pads are available as a 7.25" x 7.25" x 3/16" (184 x 184 x 4.8 mm) or a 9" x 9" x 3/16" (229 x 229 x 4.8 mm) poly release faced pad for protection of recessed electrical boxes. The pad is sized to fit a common 1-1/2" (38mm) deep 4S box (Cat. No. SSP4S) and 2-1/8" deep 4S box (Cat. No. SSP9S). To install pad, remove release liner from one side of pad. Align edge of pad to top of box and center pad. Adhere pad to top of box and bring pad down over the back of the box. Adhering pad to all outer surfaces will create excess material at the corners. Pinch pleat material together and fold against sides of box or trim off as desired. Putty pad must be applied to a uniform depth of 3/16" (4.8 mm) (one layer of pad) over the exterior surface of box for both 1 and 2 hour applications. Optionally, additional putty may be packed into conduit fittings to prevent the transmission of smoke through the conduit system.

**NOTE:** One side of release liner may remain on pad.

### EXAMPLE OF MAINTAINING STC VALUES OF WALL AND CREATING AN EFFECTIVE SOUND BARRIER

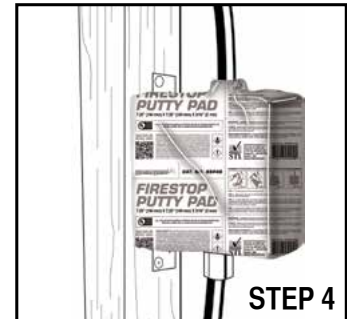
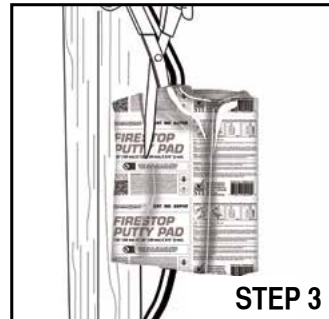
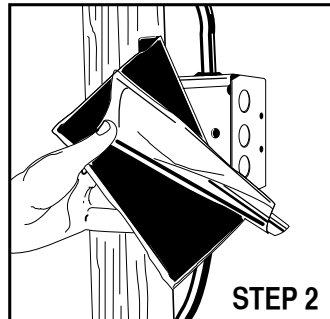


Arrows show path of sound travel.



Putty pad reduces sound transmission by blocking path of sound travel.

## INSTALLATION OF PUTTY PADS ON ELECTRICAL BOXES (PROTECTIVE WALL OPENING MATERIAL)



**STEP 1** - Remove poly liner from one side of pad.

**STEP 2** - Align pad to the side of box partially overlapping the stud and adhere. Work to opposite side of the box to the edges.

**STEP 3** - If wall membrane is in place, pack putty into gaps between box and wallboard slightly overlapping inner wallboard surface. If membrane is to be installed after pad installation, overlap front edge of box so that putty will be compressed around edges of box as wallboard is installed. Cut slits in pad to fit around conduits or cables.

**STEP 4** - Press pad to surface of top, bottom and sides of box. Trim excess at corners and apply to conduit fittings connected to the box. As required, putty may be packed into inside of conduit fittings to prevent passage of smoke. Poly liner may be left on the back of the pad or removed.

## MAINTENANCE

---

Installations should be inspected periodically for subsequent damage. Any damage should be repaired using SpecSeal® products per the original approved design.

## CLEAN UP

---

Remove excess material from all contact surfaces immediately. Clean hands or skin using a waterless hand cleaner. When using water-emulsifiable soaps, apply soap and work over areas of skin contact prior to applying water.

## TECHNICAL SERVICE

---

Specified Technologies Inc. provides toll free technical support to assist in product selection and appropriate installation design. UL Systems, Material Safety Data Sheets and other technical information is available at the Technical Library at [www.stifirestop.com](http://www.stifirestop.com).

## PRECAUTIONARY INFORMATION

---

Consult Safety Data Sheet for additional information on the safe handling and disposal of this material. Wash areas of skin contact with soap and water. Avoid contact with eyes. DO NOT APPLY TO EXPOSED ELECTRICAL CONDUCTORS.

## AVAILABILITY

---

SpecSeal® Series SSP Putty is available from authorized STI distributors nationwide. Consult factory for the names and locations of the nearest sales representatives or distributors. 📍

**TABLE A: ORDERING INFORMATION**

CAT. NO.	DESCRIPTION	CASE QTY.
SSP4S	7.25" x 7.25" x 3/16" (184 x 184 x 4.8 mm) pad	20
SSP9S	9.00" x 9.00" x 3/16" (229 x 229 x 4.8 mm) pad	20



STI WARRANTS THAT ITS PRODUCTS WILL BE FREE OF DEFECTS FOR ONE YEAR FROM THE DATE OF PURCHASE. IN THE EVENT A PRODUCT DOES NOT CONFORM TO THIS WARRANTY, THE SOLE AND EXCLUSIVE REMEDY IS, AT STI'S OPTION, REPLACEMENT OF THE PRODUCT OR REFUND OF THE PURCHASE PRICE. THE WARRANTY PROVIDED HEREIN SHALL BE VOID AND OF NO EFFECT IN THE EVENT THAT THE PRODUCT IS NOT INSTALLED IN ACCORDANCE WITH STI'S PUBLISHED INSTRUCTIONS, LISTED SYSTEMS AND APPLICABLE BUILDING AND SAFETY CODES. THIS WARRANTY IS IN LIEU OF ALL OTHER REPRESENTATIONS AND EXPRESSED OR IMPLIED WARRANTIES (INCLUDING THE IMPLIED WARRANTIES OF MERCHANTABILITY OR FITNESS FOR A PARTICULAR USE) AND UNDER NO CIRCUMSTANCES SHALL STI BE LIABLE FOR ANY DIRECT, INDIRECT, SPECIAL, INCIDENTAL OR CONSEQUENTIAL DAMAGES OR LOSSES, INCLUDING, WITHOUT LIMITATION, ANY LOSS OF REVENUE, PROFIT OR USE. PRIOR TO USE, THE USER SHALL DETERMINE THE SUITABILITY OF THE PRODUCT FOR ITS INTENDED USE, AND THE USER ASSUMES ALL RISKS AND LIABILITY FOR SUBSEQUENT USE. NO PERSON OTHER THAN AN OFFICER OF STI IS AUTHORIZED TO BIND STI TO ANY OTHER WARRANTY FOR ANY PRODUCT FOR WHICH THIS WARRANTY IS ISSUED.

**MADE IN THE USA – COPYRIGHT © 2016 SPECIFIED TECHNOLOGIES INC.**



**Specified Technologies Inc. • Somerville NJ 08876 • Phone: 800.992.1180 • Fax: 908.526.9623**

