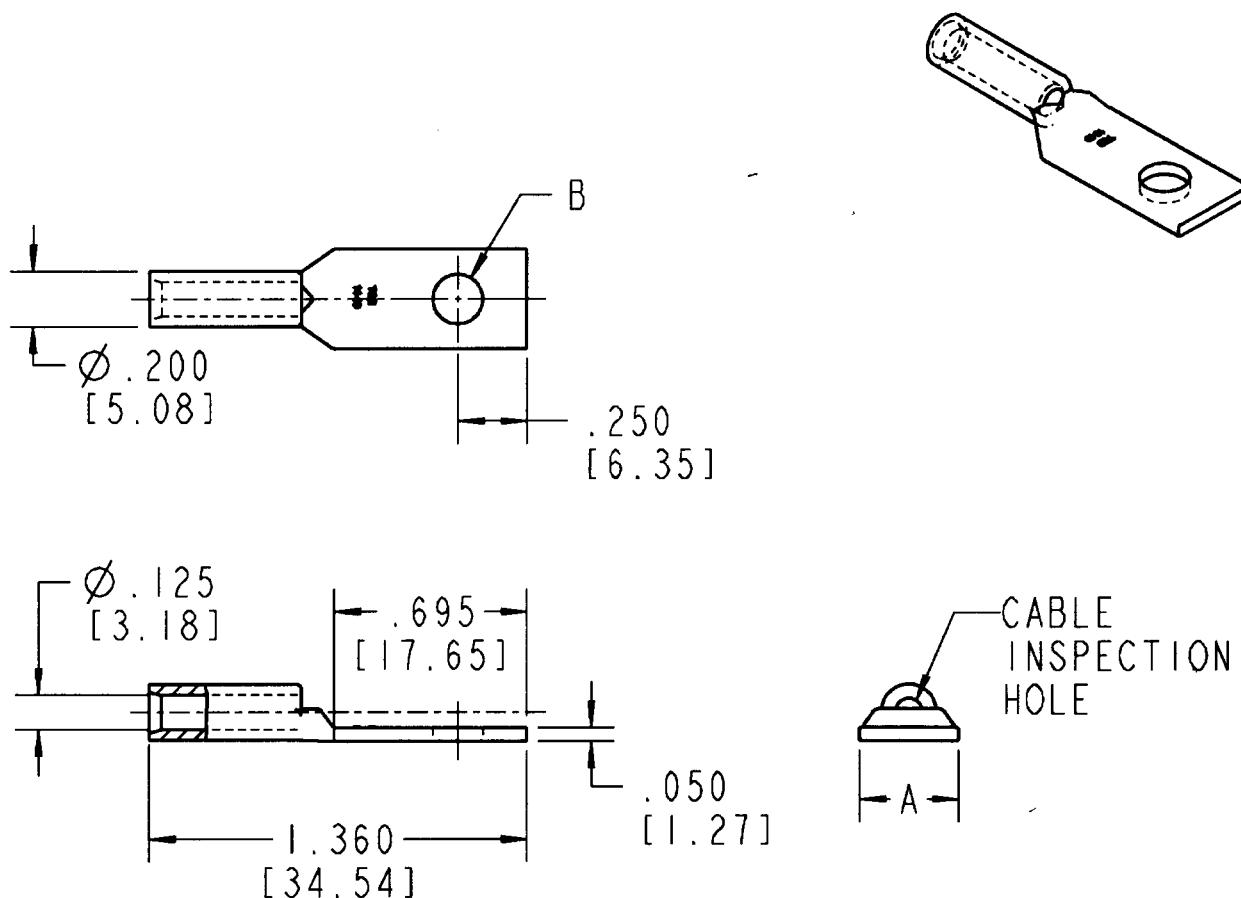




Color-Keyed



NOTES:

1. MATERIAL: HIGH CONDUCTIVITY WROUGHT COPPER.
2. FINISH: ELECTRO TIN PLATE.
3. APPLICATION TOOLING: ERG2002, ERG2005, "C" NEST.

CATALOG NO	WIRE SIZE	A	B (BOLT SIZE)
256-30695-1351	14-10 AWG	.360 [9.14]	#8
256-30695-1352**		.410 [10.41]	1/4

** NOT UL OR CSA RECOGNIZED MODEL

GENERAL NOTES

1. ALL DIMENSIONS ARE FOR REFERENCE ONLY.
2. DIMENSIONS IN BRACKETS [] ARE IN METRIC UNITS.

REVISIONS

SEE ERN (****) FOR APPROVAL SIGNATURES & RELEASE DATE.
PROJECT NO: ****

Thomas & Betts
www.tnb.com

DESCRIPTION:

ONE HOLE STANDARD BARREL LUG

ORIGINAL PROJECT NO / (ERN NO)

CM402358 / (2013180)

SHEET NO:

1 OF 1

REV. NO:

-

DRAWING NO:

WSD-001054

THIS DRAWING IS INTENDED FOR DESCRIPTIVE PURPOSES ONLY, AND THE RIGHT IS RESERVED TO DEVIATE FROM ANY OF THE DETAILS SHOWN HEREON.
COPYRIGHT THOMAS & BETTS CORPORATION. ALL RIGHTS RESERVED. PROPRIETARY AND CONFIDENTIAL.