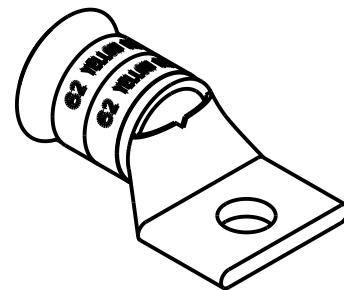
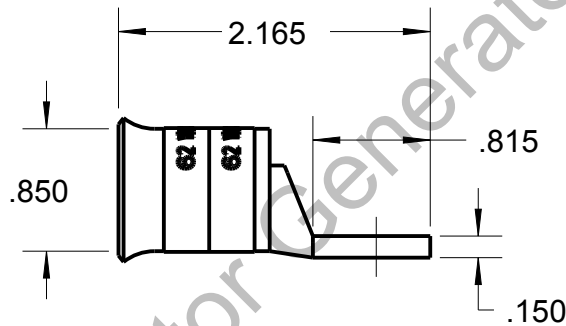
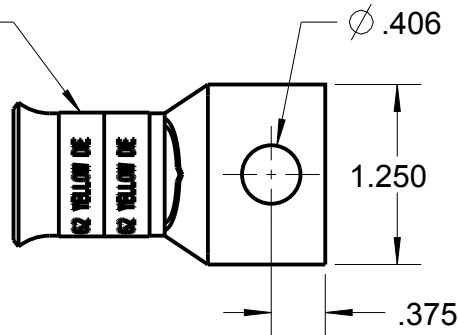


# Blackburn Compression

Featuring the Color-Keyed® System

CATALOG NO. 58163BS

STANDARD BELLED END  
BARREL



WIRE SIZE: 300 MCM, 4/0 WELD, 650/24  
MATERIAL: HIGH CONDUCTIVITY COPPER  
FINISH: TIN PLATED

## GENERAL NOTES

1. ALL DIMENSIONS ARE FOR REFERENCE ONLY.
2. DIMENSIONS IN BRACKETS [ ] ARE IN METRIC UNITS.

## REVISIONS

\*\* SEE ERN ( \*\*\*\* )  
FOR APPROVAL SIGNATURES  
& RELEASE DATE.  
PROJECT NO: \*\*\*\*

**Thomas & Betts**  
www.tnb.com

DESCRIPTION:

1 HOLE LUG

ORIGINAL PROJECT NO / ( ERN NO )

/ ( )

SHEET NO:

1 OF 1

REV. NO:

0

DRAWING NO: WSD-002806

58163BS