

FEATURES:

- Tapered threaded hub to seal in female thread.
- Captive visible “O” Ring to seal knockouts.
- High strength, chemical-resistant, non-burning, non-dripping thermoplastic.
- Liquid and dust tight.
- High mechanical pull out strength.
- Smooth insulated body throughout for maximum dielectric strength.
- UL Listed 128B

WARRANTY: Thomas & Betts sells this product with the understanding that the user will perform all necessary tests to determine the suitability of this product for the user's intended application. Thomas & Betts warrants that this product will be free from defects in materials and workmanship for a period of two (2) years following the date of purchase. Upon prompt notification of any warranted defect, Thomas & Betts will, at its option, repair or replace the defective product or refund the purchase price. Proof of purchase is required. Misuse or unauthorized modification of the product voids all warranties.

Limitations and Exclusions: **THE ABOVE WARRANTY IS THE SOLE WARRANTY CONCERNING THIS PRODUCT, AND IS IN LIEU OF ALL OTHER WARRANTIES EXPRESS OR IMPLIED, INCLUDING BUT NOT LIMITED TO ANY IMPLIED WARRANTY OF MERCHANTABILITY OR FITNESS FOR A PARTICULAR PURPOSE, WHICH ARE SPECIFICALLY DISCLAIMED. LIABILITY FOR BREACH OF THE ABOVE WARRANTY IS LIMITED TO COST OF REPAIR OR REPLACEMENT OF THE PRODUCT, AND UNDER NO CIRCUMSTANCES WILL THOMAS & BETTS BE LIABLE FOR ANY INDIRECT, SPECIAL, INCIDENTAL OR CONSEQUENTIAL DAMAGES.**

Thomas & Betts Corporation
Memphis, Tennessee
www.tnb.com

TA01782 B

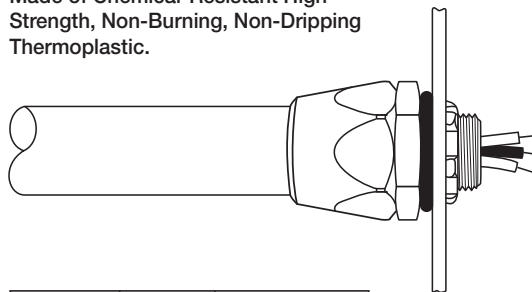
© 2012 Thomas & Betts Corporation. All Rights reserved

Page 4 of 4

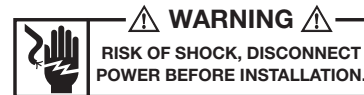
T&B® Fittings

INSTALLATION INSTRUCTIONS for Non-Metallic Liquid Tight Connector

Made of Chemical-Resistant High Strength, Non-Burning, Non-Dripping Thermoplastic.



CAT. NOS.	SIZE	DESCRIPTION
6302	1/2"	Straight
6303	3/4"	Straight
6304	1"	Straight
6305	1-1/4"	Straight
6322	1/2"	90° Elbow
6323	3/4"	90° Elbow
6324	1"	90° Elbow
6325	1-1/4"	90° Elbow



Thomas & Betts

TA01782 B

Page 1 of 4

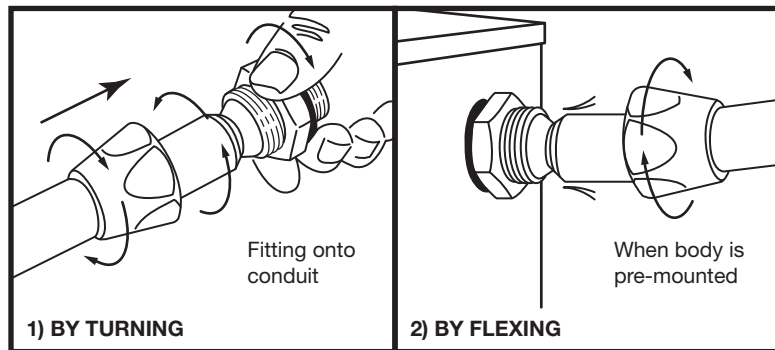
INSTALLATION INSTRUCTIONS: (Two equally effective methods)

1) **BY TURNING:**

Slip gland nut on conduit with wide end towards connector body. Place “Left Handed Conduit Gripping Thread” into conduit and tighten **counter-clockwise** until conduit touches straight threaded shoulder of the connector. Do not over-tighten. Slip gland nut onto body and tighten clockwise with wrench.

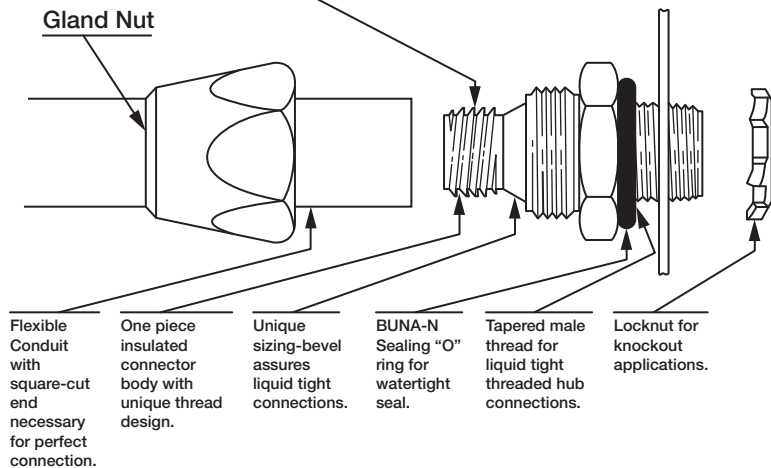
2) **BY FLEXING:**

Pre-mount body to box. Slip gland nut on conduit with wide end toward connector body. Place conduit over “Left Handed Conduit Gripping Thread” and push on with a flexible up and down and side to side motion. Work on by flexing until conduit touches straight threaded shoulder of connector. Do not over-tighten. Slip gland nut onto body and tighten clockwise with wrench.



For LIQUID-TIGHT flexible, Non-Metallic Conduit Connections

Left Handed Conduit Gripping Thread*



* Reduces number of parts for automatic disassembling of raceway from fitting.