

## Interlocking Insulating Covers for Compression Taps

Better covers for taps.

### Soft Shell H-Tap/ C-Tap Covers

Thomas & Betts offers an improved design for one-piece covers of H-Tap and C-Tap connectors. The new design is more size-efficient and includes an easy latch mechanism. The new covers also contain flash barriers to help protect against electrical flashovers. The covers are molded from high-impact polypropylene (UL94V-1) and are UL® Listed, CSA certified to 600V applications at 105° C.

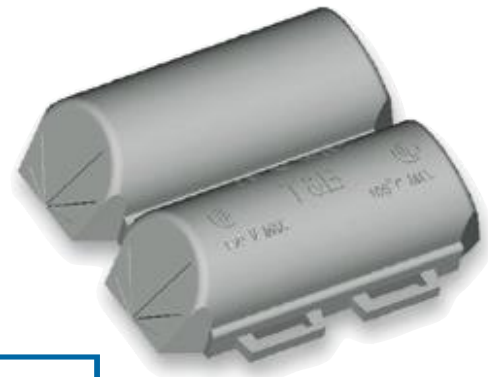
**Blackburn® Soft Shell Covers include these features:**

- **Size-efficient design**  
Won't take up as much room in the enclosure or vault, easier to store and carry to the job site
- **Easy Latch Mechanism**  
Quick but sturdy cover latch for optimum insulation
- **Flash Barriers**  
Provides protection from electrical flashovers
- **105° C Rating**  
Offers maximum performance and higher than many competitors' temperature ratings
- **High-Impact Polypropylene**  
Constructed from rugged materials for long-lasting protection

Also available in clear, impact-resistant and flame-retardant polycarbonate (UL94V-0). The clear version includes an internal pocket for a visible identification label without opening the cover. Contact Customer Service for shipping and availability.



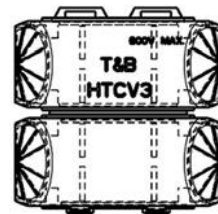
Smaller size requires less space in enclosure  
High-impact polypropylene for rugged, dependable use



Easy latch mechanism



Clear, polycarbonate  
(UL94V-0) version available



CAT. NO.	FOR H-TAPS	FOR C-TAPS	DIMENSIONS (IN.)			PKG. QTY.
			A	B	C	
HTCV1	CHT814-10	54705, 54710, 54715	1 3/4	1/2	5/16	5
HTCV2	CHT214-9, CHT250214-8, CHT25014-7, CHT2502-6	54770, 54775, 54780	3 3/8	1 1/8	1	5
HTCV3	CHT50010-5, CHT50040-4	54740, 54745, 54750, 54755, 54760, 54765	3 3/32	1 1/8	1 1/16	5
HTCV4	CHT75010-3, CHT750350-2, CHT750350-1F, CHT75040-11	N/A	5 3/8	2	1 1/16	5
HTCV2CLRFR	CHT214-9, CHT250214-8, CHT25014-7, CHT2502-6	N/A	3 3/8	1 1/8	1	5

**Thomas & Betts**

**United States**  
Tel: 901.252.8000  
800.816.7809  
Fax: 901.252.1354

**Technical Services**  
Tel: 888.862.3289

[www.tnb.com](http://www.tnb.com)

## Interlocking Insulating Covers for Compression Taps

Quick and easy insulation  
for H-type compression taps.

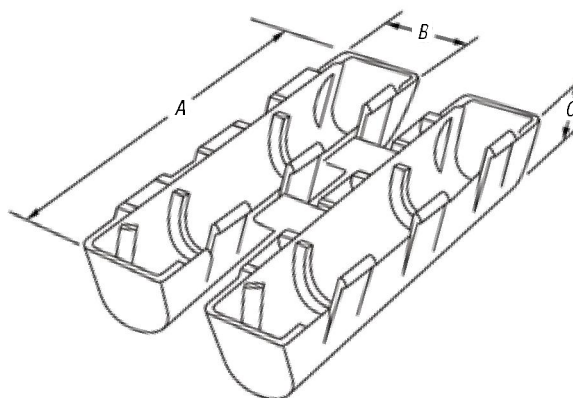
### H-Tap Insulating Covers (Soft Cover)

- Eliminates taping
- Provided with three positive locking latches and overlapping fringe for maximum cable insulation



#### Specifications

- Rating: 90° C, 600V.  
Made of flame-retardant,  
high-impact polypropylene.
- Material: Polypropylene
- Color: Black
- Voltage Rating: 600V max.
- Temperature: 90° C



(C) Height — typical both halves



CAT. NO.	WIRE RANGE		AL H-TAPS	USE TO INSULATE	DIMENSIONS (IN.)			"A" DIM.	"B" DIM.
	MAX.	MIN.			A	B	C		
HT20C	2/0 AWG	#6 AWG	63110/63115 63125/63120	—	4½	1¼	1⅛	—	—
HT40C	4/0 AWG	#6 AWG	63140 63148	—	5¾	1½	1⅛	—	—
HT600C	500 kcmil	#2 AWG	63160	63169	6¼	2⅛	1¾	—	—
HT1000C	1000 kcmil to 500 kcmil	250 kcmil to 1/0 AWG	63180	—	—	—	—	7.250 (184.15mm)	2.330 +.060
HT1000C-L	1000 kcmil to 500 kcmil	250 kcmil to 250 kcmil	63170	—	—	—	—	10.374 (263.40mm)	2.330 +.060

## Interlocking Insulating Covers for Compression Taps

### H-Tap Insulating Covers (Hard Covers)

- For use in splice boxes, indoors or in tray indoors
- Easy to use — simply place H-Tap in cover and snap cover closed
- Consult factory for available flame-retardant version
- Hard shell outer covers guard against impact, inner seal keeps out dust
- Installs quickly and easily without special tools — simply snap together
- Eliminates time-consuming taping
- Provides high-quality, neat, uniform installations
- Range-taking design reduces inventory



CAT. NO.	DIMENSIONS (IN.)		
	A (LENGTH)	B (THICK)	C (WIDTH)
HTC2S	2	1 1/8	1 1/16
HTC2	3 1/2	1 1/8	1 1/16
HTC40	4 1/4	1 1/8	2
HTC40L2	5 1/4	1 1/8	2
HTC500	6	1 3/4	2 3/4
HTC1000	7	2 3/8	3 1/8
HTC1000L	10	2 3/8	3 1/8

Interlocking insulating covers for "H" type compression taps. For use in splice boxes, indoors or in tray indoors. Place the H-Tap in the cover. Snap the cover closed. Consult factory for flame-retardant version.

**Technical Data:** HTC2 and HTC2S use insulation wrap instead of end cushions for inner seal. Connector Cat. Nos. 54755 through 54790 and 63148 through 63180 require hydraulic crimping tools. Refer to instruction sheets. Outer Hard Shell Covers — High-impact black thermoplastic (Noryl), Flammability class UL 94V-1 Inner Seal — Black neoprene sponge soft closed cell, oxygen index 28% UL 94 HBF

Temperature Rating — 90° C maximum

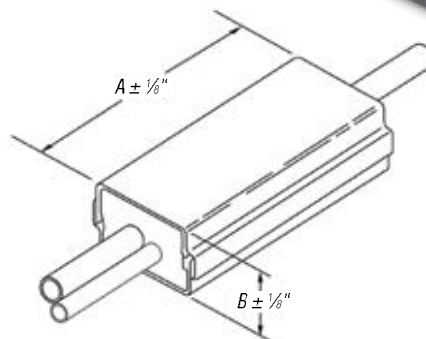
Voltage Rating — 600V maximum

Uses insulation wrap instead of end cushions for inner seal.

**Note:** Insulation covers are not reusable.

#### For H-Tap Applications

CAT. NO.	AL H-TAP	CU H-TAP
HTC2	63105	—
HTC2S	—	CHT814-10
HTC40	63110	CHT214-9
	63118	CHT250214-8
	63125	CHT2514-7
	63140	CHT2502-6
HTC500	63148	CHT50010-5/CHT50040-4
	63160	CHT75010-3/CHT750350-2
HTC1000L	63170	—
HTC1000	63180/63169	CHT750350-1F



These insulating covers provide hard-shell insulated protection for "H" type compression taps and splices, and because there is no taping required, you get uniform quality and appearance each time. The exclusive locking design provides the range-taking capability. Only five H-Tap insulating catalog cover numbers accommodate the range of #6 AWG–1000 kcmil in the main, and #12 AWG–500 kcmil in the branch.

#### For C-Tap Applications

CAT. NO.	C-TAP	COLOR CODE
HTC40	54720	BROWN
	54725	GREEN
	54730	PINK
	54755	BLUE
	54760	BROWN
HTC40L2	54735	BLACK
	54740	ORANGE
	54745	PURPLE
	54750	YELLOW
	54765	PINK
HTC500	54770	BLACK
	54775	YELLOW
	54780	WHITE
	54785	N/A
	54790	N/A