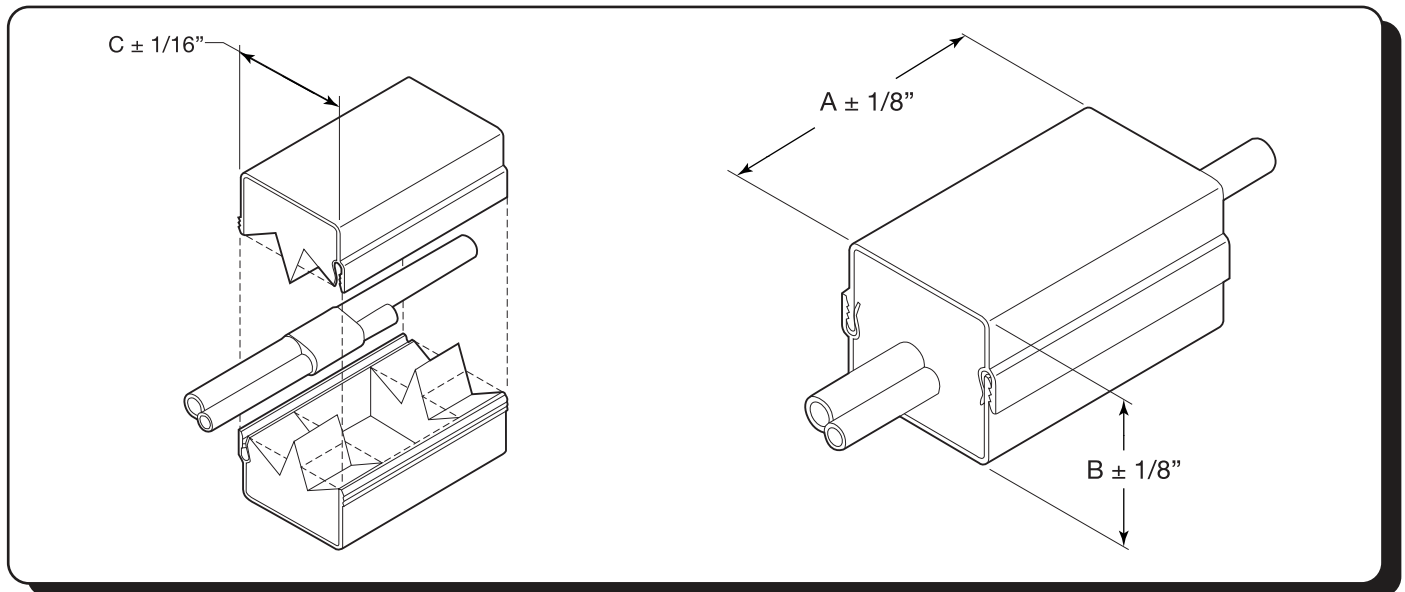


INSULATING COVERS FOR H-TAP AND C-TAP CONNECTORS

Catalog No's. HTC2S, HTC2, HTC40, HTC40L2, HTC500, HTC1000, HTC1000L



CAT. NO.	A (LENGTH)	B (THICK)	C (WIDTH)
HTC2S	2	1-1/8	1-7/16
HTC2	3-1/2	1-1/8	1-7/16
HTC40	4-1/4	1-9/16	2
HTC40L2	5-3/4	1-9/16	2
HTC500	6	1-3/4	2-3/4
HTC1000	7	2-3/8	3-7/8
HTC1000L	10	2-3/8	3-7/8
DIMENSIONS IN INCHES			

INSTALLATION INSTRUCTIONS:

1. Install cables in connectors. If burrs or sharp edges result from the crimping process they should be removed. Uninsulated end of cable should not protrude beyond connector more than 1/4".
2. Remove the filler tabs only for 400 MCM and larger cable sizes. For covers HTC2 and HTC2S, remove the foam pad liner on one side, wrap it completely around connector, removing the outer pad liner.
3. Align cover halves centrally over connector such that inner and outer teeth interlock and body of connector lies between foam pads (See figure 1). For HTC2 and HTC2S, align cover with wrapped connector in the center (See figure 2).
4. With the palm of your hands or the use of channel locks, squeeze cover closed to full engagement of teeth, and check that ends are sealed.



CAUTION

INSULATION COVERS ARE NOT REUSABLE.

NOTES:

1. HTC2 and HTC2S use insulation wrap instead of end cushions for inner seal (See figure 2).
2. Connector Cat. No's. 54755 thru 54790 and 63148 thru 63180 require hydraulic crimping tools. Refer to connector instruction sheets.

ALUMINUM H-TAP APPLICATIONS

COVER CAT. NO.	FIGURE	H-TAP NO.	COLOR CODE
HTC2	2 (NOTE 1)	63105	ORANGE
HTC40	1	63110 63118 63125 63140	GREEN GREEN GREEN BLUE
HTC500	1	63148 63160	BLUE RED
HTC1000L	1	63170	BLACK
HTC1000	1	63180 63169	BLACK BLACK

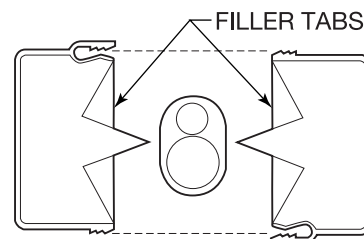


Figure 1

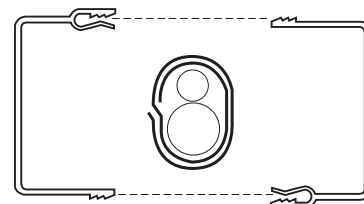


Figure 2

COPPER C-TAP APPLICATIONS

COVER CAT. NO.	C-TAP NO.	COLOR CODE
HTC2S (NOTE 1)	54705 54710 54715	RED BLUE GREY
HTC40	54720 54725 54730 54755 54760	BROWN GREEN PINK BLUE (NOTE 2) BROWN (NOTE 2)
HTC40L2	54735 54740 54745 54750	BLACK ORANGE PURPLE YELLOW
HTC500	54765 54770 54775 54780 54785	PINK (NOTE 2) BLACK YELLOW ----- -----
HTC1000	54790	-----

COPPER H-TAP APPLICATIONS

COVER CAT. NO.	FIGURE	H-TAP CAT. NO.
HTC2S (NOTE 1)	2 (NOTE 1)	CHT814-10
HTC40	1	CHT25014-7 CHT250214-8 CHT214-9 CHT2502-6
HTC500	1	CHT50040-4 CHT50010-5 CHT750350-2 CHT75010-3
HTC1000	1	CHT750350-1F

WARRANTY: Thomas & Betts sells this product with the understanding that the user will perform all necessary tests to determine the suitability of this product for the user's intended application. Thomas & Betts warrants that this product will be free from defects in materials or workmanship for a period of two (2) years following the date of purchase. Upon prompt notification of any warranted defect, Thomas & Betts will, at its option, repair or replace the defective product. Misuse, misapplication or modification of Thomas & Betts Products immediately voids all warranties.

Limitations and Exclusions: THE ABOVE WARRANTY IS THE SOLE WARRANTY CONCERNING THIS PRODUCT, AND IS IN LIEU OF ALL OTHER WARRANTIES EXPRESS OR IMPLIED, INCLUDING BUT NOT LIMITED TO ANY IMPLIED WARRANTY OF MERCHANTABILITY OR FITNESS FOR A PARTICULAR PURPOSE, WHICH ARE SPECIFICALLY DISCLAIMED. LIABILITY FOR BREACH OF THE ABOVE WARRANTY IS LIMITED TO COST OF REPAIR OR REPLACEMENT OF THE PRODUCT, AND UNDER NO CIRCUMSTANCES WILL THOMAS & BETTS BE LIABLE FOR ANY INDIRECT, SPECIAL, INCIDENTAL OR CONSEQUENTIAL DAMAGES.