



E32447

Except where noted by ►

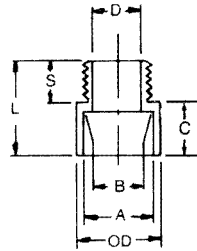
## Nonmetallic Adapters and Couplings

- For use with Riser-Gard® and General Purpose

### Male Terminal Adapters



For adapting nonmetallic conduits to boxes, threaded fittings, metallic systems. Male threads on one end, socket end on other.

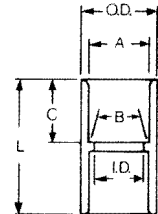


### Standard Couplings

All socket fittings should be attached Using Carlon solvent cement. Using Carlon fittings with Carlon nonmetallic conduit insures system integrity.



Socket type for joining nonmetallic conduit.



Part No.	Size	Std. Ctn. Qty.	Color	A	B Typical	Min. D	Max. OD	C	T Typical	L	Std. Ctn. Wt. (lbs.)
E943E	3/4	125	Gray	1.064	1.046	.800	1 11/32	3/4	9/16	1 3/8	3.5
E943F	1	50	Gray	1.330	1.310	1.018	1 5/8	1	1 1/16	1 25/32	3
E943G	1 1/4	50	Gray	1.677	1.655	1.332	2 1/32	1	3/4	1 15/16	4
E943H	1 1/2	25	Gray	1.918	1.894	1.566	2 5/32	1 3/16	3/4	2 1/16	2.5
E943J	2	50	Gray	2.393	2.369	2.000	2 21/32	1 3/16	3/4	2 1/8	7
SCE943G	1 1/4	50	Orange	1.677	1.655	1.332	2 1/32	1	3/4	1 15/16	4
SCE943H	1 1/2	25	Orange	1.918	1.894	1.566	2 5/32	1 3/16	3/4	2 1/16	2.5
SCE943J	2	50	Orange	2.393	2.369	2.000	2 21/32	1 3/16	3/4	2 1/8	7

Part No.	Size	Std. Ctn. Qty.	Color	A	B Typical	Min. D	Max. OD	C	L	Std. Ctn. Wt. (lbs.)
E940E	3/4	100	Gray	1.064	1.046	.840	1 5/16	3/4	1 5/8	4.4
E940F	1	50	Gray	1.330	1.310	1.210	1 5/8	1 5/16	2	3.5
E940G	1 1/4	30	Gray	1.677	1.655	1.535	1 63/64	1	2 1/8	3.5
E940H	1 1/2	25	Gray	1.918	1.894	1.755	2 15/64	1 1/8	2 3/8	3.9
E940J	2	30	Gray	2.393	2.369	2.190	2 47/64	1 3/16	2 1/2	5.25
SCE940G	1 1/4	30	Orange	1.677	1.655	1.535	1 63/64	1	2 1/8	3.5
SCE940H	1 1/2	25	Orange	1.918	1.894	1.755	2 15/64	1 1/8	2 3/8	3.9
SCE940J	2	30	Orange	2.393	2.369	2.190	2 47/64	1 3/16	2 1/2	5.25

## Metallic Adapters and Couplings

### Universal Aluminum Couplings

- For use with Plenum-Gard®, Riser-Gard®, Hal-Free Riser-Gard®, and General Purpose

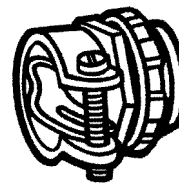
Self-threading, which draws each end of the conduit into the center of the coupler.



Part No.	Size	Duct O.D. Range	Std. Ctn. Qty.	Std. Ctn. Wt. (lbs.)
► P75	3/4"	.91 – 1.08	10	12
► P100	1"	1.21 – 1.41	100	25
► P125	1 1/4"	1.44 – 1.68	100	28
► P150CPLR	1 1/2"	1.80 – 2.02	100	35
► P200	2"	2.31 – 2.48	50	19

### Metallic Terminal Adapter

- For use with Plenum-Gard®



Part No.	Size	Std. Ctn. Qty.	Std. Ctn. Wt. (lbs.)
► E147E	3/4"	1	.7
► E147F	1"	25	1.5

### Terminating Connector

- For use with Plenum-Gard® and Hal-Free Riser-Gard®



Part No.	Size	Nom. O.D. Range	Std. Ctn. Qty.	Std. Ctn. Wt.
TC100	1"	.91 – 1.08	12	50
TC125	1 1/4"	1.495 – 1.70	12	52
TC150	1 1/2"	1.80 – 2.00	12	56
TC200	2"	2.31 – 2.52	12	58

### Washers Flat Sealing Washer

Where a waterproof termination is required into any enclosure (metallic or nonmetallic), install the neoprene washer over the threads of a terminal adapter before inserting into the enclosure. Use a standard locknut or threaded bushing to secure the assembly.



Part No.	Size	Std. Ctn. Qty.	Std. Ctn. Wt. (lbs.)
► E943EW	3/4"	125	.45
► E943FW	1"	100	.46
► E943GW	1 1/4"	50	.44
► E943HW	1 1/2"	50	.45
► E943JW	2"	25	.42