

DISCONNECT ENCLOSURE WITH CLAMPS, TYPE 4



INDUSTRY STANDARDS

UL 508A Listed; Type 4, 12; File No. E61997
cUL Listed per CSA C22.2 No. 94; Type 4, 12; File No. E61997

NEMA/EEMAC Type 3, 4, 12, 13
CSA File No. 42186: Type 4, 12
IEC 60529, IP66

APPLICATION

For disconnect applications in which a clamp-secured door is preferred. Clamps on three sides of the door keep liquid and

contaminants out. Preferred cutout accepts major brand disconnect switches and circuit breakers.

Furnished with Enclosures

1. Bracket welded to door for attaching disconnect door catch (interlock)
2. Instructions to locate and install disconnect switches, circuit breakers and operating mechanisms

SPECIFICATIONS

- 14 gauge steel
- Seams continuously welded and ground smooth
- External mounting brackets
- External-formed flange around all sides of enclosure opening
- Stainless steel door clamps on three sides of door
- Removable door with continuous hinge
- Data pocket is high impact thermoplastic
- Type 4 rated door gasket
- Collar studs for mounting optional panels
- Holes in body for mounting disconnect operating handle and operating mechanism
- Bonding provision on door
- Bracket welded to door for attaching disconnect door catch (interlock) and instructions for installing disconnects

FINISH

ANSI 61 gray polyester powder coating inside and out.

ACCESSORIES

See also *Accessories*.

Blank Adapter Plates, Mild Steel

Industrial Corrosion Inhibitors

Electric Heater

PANELITE™ Enclosure Lights Overview

Panels for Type 3R, 4, 4X, 12 and 13 Enclosures

MODIFICATION AND CUSTOMIZATION

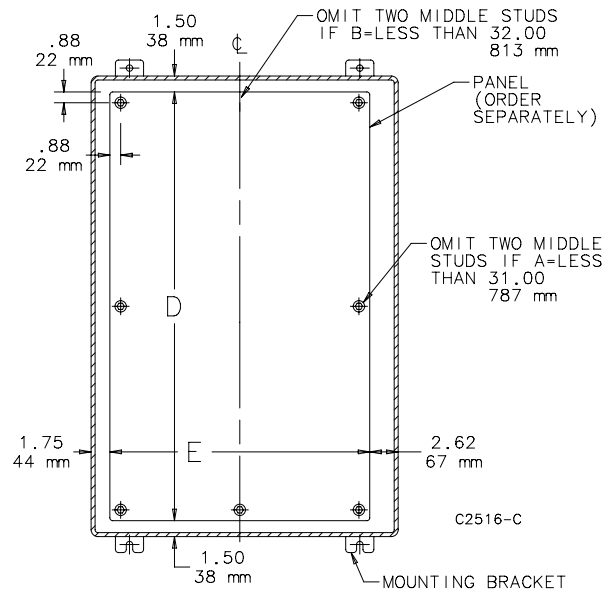
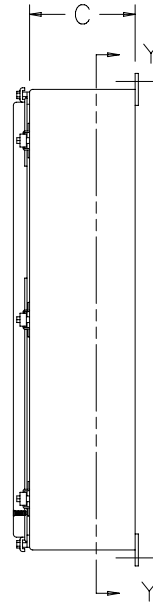
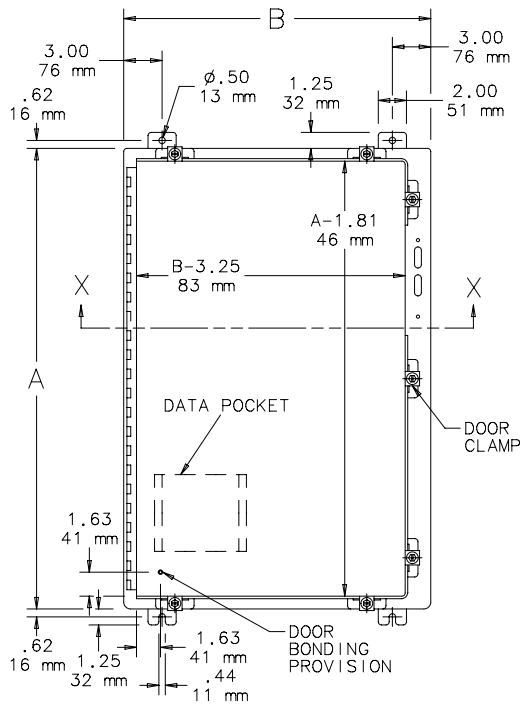
Hoffman excels at modifying and customizing products to your specifications. Contact your local Hoffman sales office or distributor for complete information.

BULLETIN: A19

Standard Product

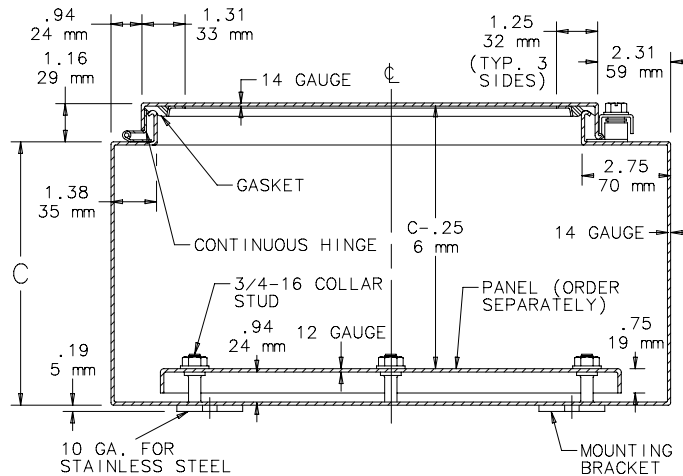
| Catalog Number | AxBxC in./mm | Panel | Conductive Panel | Panel Size D x E in./mm | Data Pocket Size in./mm | Number of Clamps |
|----------------|---|--------|------------------|-------------------------------|----------------------------|---------------------|
| A24HS2108LP | 24.00 x 21.38 x 8.00 610 x 543 x 203 | A24P20 | A24P20G | 21.00 x 17.00 533 x 432 | 6.00 x 6.00 152 x 152 | 5 |
| A24HS2508LP | 24.00 x 25.38 x 8.00 610 x 645 x 203 | A24P24 | A24P24G | 21.00 x 21.00 533 x 533 | 6.00 x 6.00 152 x 152 | 5 |
| A30HS2508LP | 30.00 x 25.38 x 8.00 762 x 645 x 203 | A30P24 | A30P24G | 27.00 x 21.00 686 x 533 | 12.00 x 12.00 305 x 305 | 5 |
| A36HS2508LP | 36.00 x 25.38 x 8.00 914 x 645 x 203 | A36P24 | A36P24G | 33.00 x 21.00 838 x 533 | 12.00 x 12.00 305 x 305 | 5 |
| A36HS3108LP | 36.00 x 31.38 x 8.00 914 x 797 x 203 | A36P30 | A36P30G | 33.00 x 27.00 838 x 686 | 12.00 x 12.00 305 x 305 | 7 |
| A42HS3112LP | 42.00 x 31.38 x 12.00 1067 x 797 x 305 | A42P30 | A42P30G | 39.00 x 27.00 991 x 686 | 6.00 x 6.00 152 x 152 | 10 |
| A42HS3712LP | 42.00 x 37.38 x 12.00 1067 x 949 x 305 | A42P36 | A42P36G | 39.00 x 33.00 991 x 838 | 12.00 x 12.00 305 x 305 | 10 |
| A48HS3712LP | 48.00 x 37.38 x 12.00 1219 x 949 x 305 | A48P36 | A48P36G | 45.00 x 33.00 1143 x 838 | 12.00 x 12.00 305 x 305 | 10 |
| A60HS3712LP | 60.00 x 37.38 x 12.00 1524 x 949 x 305 | A60P36 | A60P36G | 57.00 x 33.00 1448 x 838 | 12.00 x 12.00 305 x 305 | 11 |

Purchase panels separately.



SECTION Y-Y

NOTE: 1. 12 gauge panels have flanges along two sides when the side dimension is more than 21.00 inches (533mm). Panels A24P20 and A24P24 have flanges on four sides.



SECTION X-X

DISCONNECT MOUNTING SPACE

Disconnects will occupy space on panel shown by dimensions E1, F1, and G1. Wiring space W1 is available when disconnect is installed in the enclosure.

E1 = 8.62 in. (219 mm) when C = 8.00 in. (203 mm)

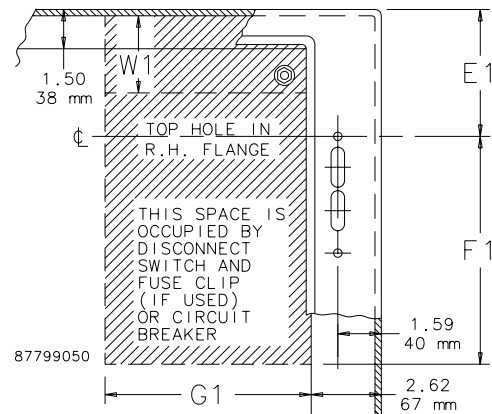
E1 = 11.62 in. (294 mm) when C = 12.00 in. (305 mm)

W1 = Wiring Space

Refer to **NATIONAL ELECTRICAL CODE, 2005** article 430-10(b) for wiring space required for line side conductors to be connected to disconnect.

Verify your application to determine whether wiring space is adequate.

Consult Space Occupied by Disconnect drawing to determine whether the disconnect device you are using will fit the enclosure size you have selected.



Consult disconnect manufacturer or see Disconnect Ordering Information at hoffmanonline.com under Technical Resources for F1 and G1 dimensions of various brands of disconnects.

PREFERRED-CUTOUT OVERVIEW



APPLICATION

Enclosures having the preferred cutout are sized for use with up to 200A disconnect switches and up to 400A circuit breakers unless otherwise specified. The preferred cutout accepts the smaller operating handle whose mounting hole centers are 4.688 in. apart. Preferred cutouts are standard in mild steel wall-mount enclosures, modular enclosures and some select large mild steel enclosures. They are also present on all standard stainless steel offerings. Mild steel operator adapter plates with brand specific preferred cutouts are available for enclosures with a rectangular universal cutout.

Preferred cutouts are designed to house the following:

Allen-Bradley

- Bulletin 1494V disconnect switches with flange-mount variable-depth operating mechanisms and Bulletin 1494V flange-mount variable-depth operating mechanisms for circuit breakers
- Bulletin 140U flexible cable operating mechanisms for 140U molded case circuit breakers
- Bulletin 140G flexible cable and variable depth flange-mount molded case circuit breakers
- Bulletin 1494C cable-operated disconnect switches with flange-mount handles
- Bulletin 194RC cable-operated flange-mount handles for use with the NFPA 79 compliant 194R IEC rotary disconnect switches

Allen-Bradley Bulletin 1494V-R1, -R2 and -W2 operating handles and Allen-Bradley Bulletin 1494F disconnect devices or Bulletin 1494D circuit breaker operators will NOT fit these enclosures.

ABB Controls flange-mount variable-depth operating mechanisms for disconnect switches and circuit breakers. Also the cable version for circuit breakers.

Eaton Cutler-Hammer Type C361 flange-mount variable-depth operating mechanisms with disconnect switches and Type C371 flange-mount variable-depth operating mechanisms for circuit breakers.

General Electric Type STDA flange handles and variable-depth operating mechanisms for disconnect switches and circuit breakers. Also SPECTRAFLEX™ cable operators for circuit breakers.

Siemens ITE MAX FLEX® flange-mount variable-depth operating handles for circuit breakers.

Schneider Square D® Class 9422 disconnect switches with flange-mount variable-depth operating mechanisms or cable mechanisms and Class 9422 flange-mount variable-depth operating mechanisms or cable mechanisms for circuit breakers.

These enclosures will NOT accept Square D Class 9422 bracket-mounted disconnect devices, Class 9422TG1 or TG2 devices.

ORDERING

The disconnect switch, operating handle, and operating mechanism must be ordered from disconnect equipment supplier. See Technical Information in the Hoffman Specifier's Guide for wire bend space available when various manufacturers' disconnect switches are installed, or Disconnect Ordering Information at hoffmanonline.com for disconnect ordering guidelines and wire bend space available. Check the enclosure dimension drawings to verify the chosen disconnect switch will fit in the enclosure.

