

CONTINUOUS HINGE TWO-DOOR WITH 3-POINT LATCH, TYPE 4X



INDUSTRY STANDARDS

UL 508A Listed; Type 3R, 4, 4X, 12; File No. E61997
 cUL Listed per CSA C22.2 No 94; Type 3R, 4, 4X, 12; File Number E61997

NEMA Type 3, 3R, 4, 4X, 12, 13
 IEC 60529, IP66
 Meets NEMA Type 3RX requirements

APPLICATION

These two-door wall-mount enclosures provide industry-leading protection for components in corrosive or wet environments. Enclosures have a removable centerpost for easy panel installation, 3-point latching with Hoffman's exclusive POWERGLIDE Handles, and a seamless foam-in-place gasket for sealing protection from contaminants.

SPECIFICATIONS

- Manufactured from 14 gauge Type 304 stainless steel
- Seams continuously welded and ground smooth
- Removable centerpost for easy panel installation
- Flange trough collar around all sides of enclosure door openings
- External mounting brackets
- Heavy-duty 3-point latching mechanism operated by Type 316 stainless steel POWERGLIDE padlocking handles
- Easily removable doors by pulling heavy gauge continuous hinge pin
- Data pocket is high-impact thermoplastic
- Seamless foam-in-place gasket
- Collar studs provided for mounting optional panels
- Bonding provisions on doors; grounding studs on body

FINISH

Doors, sides, top and bottom have smooth #4 brushed finish.

ACCESSORIES

Floor Stand Kit, Stainless Steel
 PANELITE Enclosure Lights Overview
 Panels for Type 3R, 4, 4X, 12 and 13 Enclosures
 Steel and Stainless Steel Window Kits
 H2OMIT Vent Drains, Type 4X
 H2OMIT Thermoelectric Dehumidifier

MODIFICATION AND CUSTOMIZATION

Hoffman excels at modifying and customizing products to your specifications. Contact your local Hoffman sales office or distributor for complete information.

BULLETIN: A4SW

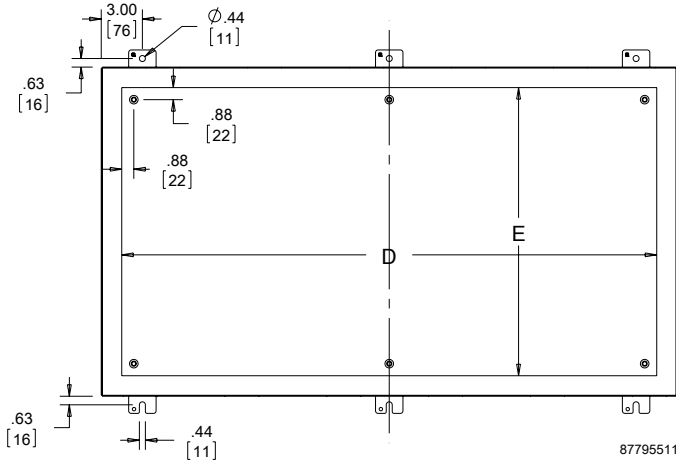
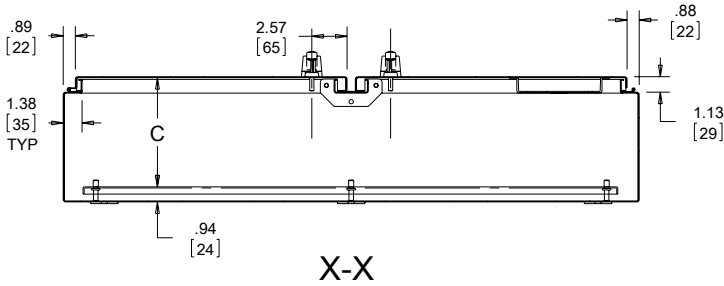
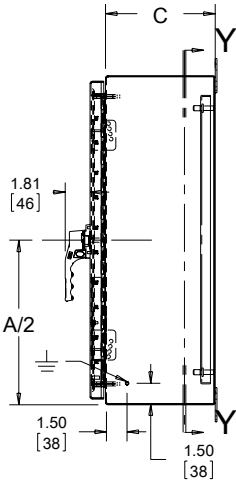
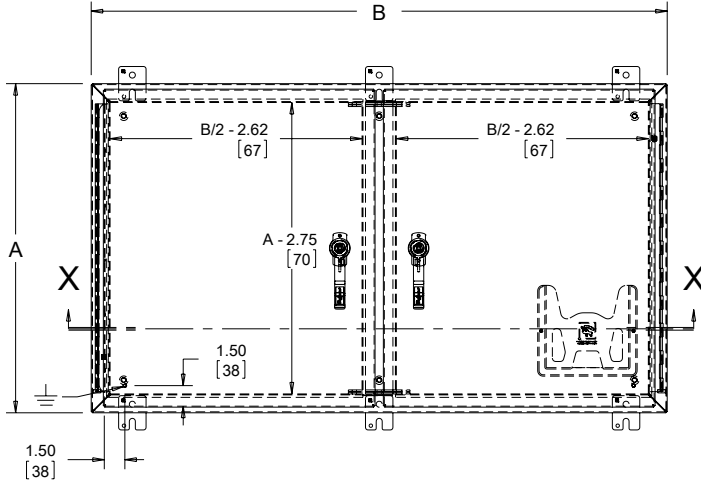
Standard Product

Catalog Number	AxBxC in./mm	Mild Steel Panel	Conductive Panel	Panel Gauge	Panel Size D x E in./mm	Y in./mm
A24H4208WFSSLP3PT	24.00 x 42.00 x 8.00 610 x 1067 x 203	A42P24	A42P24G	12	39.00 x 21.00 991 x 533	1.50 38
A24H4808WFSSLP3PT	24.00 x 48.00 x 8.00 610 x 1219 x 203	A48P24	A48P24G	12	45.00 x 21.00 1143 x 533	1.50 38
A30H4210WFSSLP3PT	30.00 x 42.00 x 10.00 762 x 1067 x 254	A42P30	A42P30G	12	39.00 x 27.00 991 x 686	1.50 38
A30H4810WFSSLP3PT	30.00 x 48.00 x 10.00 762 x 1219 x 254	A48P30	A48P30G	12	45.00 x 27.00 1143 x 686	1.50 38
A30H6010WFSSLP3PT	30.00 x 60.00 x 10.00 762 x 1524 x 254	A60P30	A60P30G	12	57.00 x 27.00 1448 x 686	1.50 38
A36H4212WFSSLP3PT	36.00 x 42.00 x 12.00 914 x 1067 x 305	A42P36	A42P36G	12	39.00 x 33.00 991 x 838	1.50 38
A36H4812WFSSLP3PT	36.00 x 48.00 x 12.00 914 x 1219 x 305	A48P36	A48P36G	12	45.00 x 33.00 1143 x 838	1.50 38
A36H6012WFSSLP3PT	36.00 x 60.00 x 12.00 914 x 1524 x 305	A60P36	A60P36G	12	57.00 x 33.00 1448 x 838	1.50 38
A42H4212WFSSLP3PT	42.00 x 42.00 x 12.00 1067 x 1067 x 305	A42P42	A42P42G	12	39.00 x 39.00 991 x 991	1.50 38
A42H4812WFSSLP3PT	42.00 x 48.00 x 12.00 1067 x 1219 x 305	A48P42	A48P42G	12	45.00 x 39.00 1143 x 991	1.50 38
A42H6012WFSSALP3PT	42.00 x 60.00 x 12.00 1067 x 1524 x 305	A60BFP42	A60BFP42G	10	56.00 x 38.00 1422 x 965	2.00 51
A48H4812WFSSLP3PT	48.00 x 48.00 x 12.00 1219 x 1219 x 305	A48P48	A48P48G	10	44.00 x 44.00 1118 x 1118	2.00 51

Purchase panels separately. Optional stainless steel panels are available for most sizes.

Enclosure backs for A42H4212WFSSLP3PT, A42H4812WFSSLP3PT and A42H6012WFSSALP3PT have internal stiffeners.

A48H4812WFSSLP3PT is 14 gauge with a 12 gauge back.



87795511

Y-Y