

SIDE DOOR ADAPTER



APPLICATION

ProLine G2 Side Door Adapters allow the mounting of a standard door to the side of the enclosure. When mounted to the enclosure, they maintain enclosure environmental integrity.

SPECIFICATIONS

- 14 gauge (1.75 mm) steel
- All mounting hardware included
- EMC Side Door Adapters are plated to provide corrosion resistance while maintaining a metal-to-metal contact
- Longer lead times required for EMC items

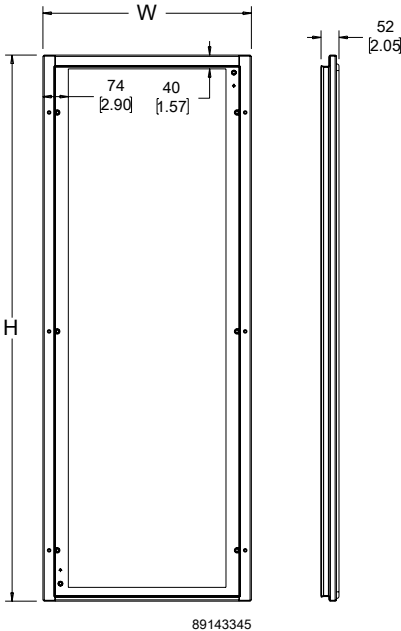
FINISH

- Polyester powder paint; RAL 7035 textured light gray standard
- Custom colors available

BULLETIN: P40

Standard Product

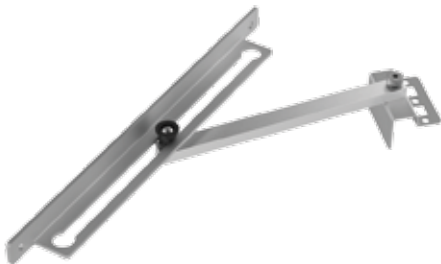
| Catalog Number | H (mm) | H (in.) | W (mm) | W (in.) | Fits Frame HxW (mm) | Description |
|----------------|--------|---------|--------|---------|---------------------|-------------|
| P2DA125 | 1183 | 46.6 | 504 | 19.8 | 1200 x 500 | Painted |
| P2DA126 | 1183 | 46.6 | 604 | 23.8 | 1200 x 600 | Painted |
| P2DA128 | 1183 | 46.6 | 804 | 31.7 | 1200 x 800 | Painted |
| P2DA145 | 1383 | 54.4 | 504 | 19.8 | 1400 x 500 | Painted |
| P2DA146HF | 1383 | 54.4 | 604 | 23.8 | 1400 x 600 | EMC |
| P2DA148 | 1383 | 54.4 | 804 | 31.7 | 1400 x 800 | Painted |
| P2DA164 | 1583 | 62.3 | 404 | 15.9 | 1600 x 400 | Painted |
| P2DA165 | 1583 | 62.3 | 504 | 19.8 | 600 x 500 | Painted |
| P2DA166 | 1583 | 62.3 | 604 | 23.8 | 1600 x 600 | Painted |
| P2DA168 | 1583 | 62.3 | 804 | 31.7 | 1600 x 800 | Painted |
| P2DA184 | 1783 | 70.2 | 404 | 15.9 | 1800 x 400 | Painted |
| P2DA185 | 1783 | 70.2 | 504 | 19.8 | 1800 x 500 | Painted |
| P2DA186 | 1783 | 70.2 | 604 | 23.8 | 1800 x 600 | Painted |
| P2DA186HF | 1783 | 70.2 | 604 | 23.8 | 1800 x 600 | EMC |
| P2DA188 | 1783 | 70.2 | 804 | 31.7 | 1800 x 800 | Painted |
| P2DA204 | 1983 | 78.1 | 404 | 15.9 | 2000 x 400 | Painted |
| P2DA205 | 1983 | 78.1 | 504 | 19.8 | 2000 x 500 | Painted |
| P2DA206 | 1983 | 78.1 | 604 | 23.8 | 2000 x 600 | Painted |
| P2DA206HF | 1983 | 78.1 | 604 | 23.8 | 2000 x 600 | EMC |
| P2DA208 | 1983 | 78.1 | 804 | 31.7 | 2000 x 800 | Painted |
| P2DA2010 | 1983 | 78.1 | 1004 | 39.5 | 2000 x 1000 | Painted |
| P2DA225 | 2183 | 85.9 | 504 | 19.8 | 2200 x 500 | Painted |
| P2DA226 | 2183 | 85.9 | 604 | 23.8 | 2200 x 600 | Painted |
| P2DA226HF | 2183 | 85.9 | 604 | 23.8 | 2200 x 600 | EMC |
| P2DA228 | 2183 | 85.9 | 804 | 31.7 | 2200 x 800 | Painted |
| P2DA2210 | 2183 | 85.9 | 1004 | 39.5 | 2200 x 1000 | Painted |



| Model | Component | Type | Height | Depth | Specialty | Catalog Number |
|------------|-----------|---|---|---|--|----------------|
| P2 | D | A | 20 | 6 | Blank | = P2DA206 |
| PROLINE G2 | Door | Blank = single door O = double door W = window door A = side door adapter DR = disconnect right DL = disconnect left DR2 = disconnect right large cutout F = dress frame | mm 22 = 2200 20 = 2000 18 = 1800 16 = 1600 14 = 1400 12 = 1200 10 = 1000 8 = 800 6 = 600 | mm 10 = 1000 8 = 800 6 = 600 5 = 500 4 = 400 | Blank = standard HF = EMC protected | |

NOTE: Not every combination is available as a standard product.

DOOR STOP KIT



APPLICATION

The Door Stop Kit is used for modular enclosures and holds doors open at 130 degrees.

FEATURES

- High-performance, 3/8-in. (9.5 mm) aluminum stop arm
- DELRIN® gliders for smooth actuation
- BV-M6 fasteners to attach the door stop to the frame and door

SPECIFICATIONS

- 10 gauge (3.0 mm) steel slotted slider bracket
- Mounts without drilling
- Kit includes a slotted slider bracket that mounts to the top or bottom of the door and a stop arm that attaches to the frame
- All necessary mounting hardware included

BULLETIN: P40

| Catalog Number | Description |
|----------------|--------------------------|
| P2ADSK | ProLine G2 Door Stop Kit |

180-DEGREE HINGE KIT

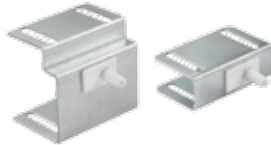


Hinge option for modular enclosure doors to provide up to a 260-degree door opening on single-door enclosures.

BULLETIN: P40

| Catalog Number | Description |
|----------------|---------------------------------|
| P2AH180 | ProLine G2 180-Degree Hinge Kit |

REMOTE DOOR SWITCHES



- The remote door switch can activate a light or other electrical component when the enclosure door is opened

- Mounts on enclosure frame and includes mounting hardware
- Mounting plate is 14 gauge steel with a plated finish
- Can be hard-wired to the Panelite LED or Fluorescent light or connected via the Panelite Door Switch Cable

BULLETIN: A80LT, P20

| Catalog Number | Description |
|----------------|---|
| ALFSWD | Door switch assembly (order connection cable separately) |
| PLFSWD | Door switch assembly for ProLine and ProLine G2 (order connection cable separately) |

DOOR SUPPORT ROLLER KIT



The PROLINE G2 Door Support Roller Kit supports and aligns heavy doors. It is suitable for all solid and window doors.

BULLETIN: P40

| Catalog Number | Description |
|----------------|------------------------------------|
| P2ADRK | PROLINE G2 Door Support Roller Kit |

PROLINE GROUNDING KIT



The Grounding Kit allows a ProLine or ProLine G2 enclosure to be grounded to VDE specifications. Includes six 12-gauge wires 411 mm (16.19) long with ring terminations and M6 mounting hardware.

BULLETIN: P20

| Catalog Number | Wire Size | Length Between Ring Terminals mm/in. | Ring Terminal Hole Diameter mm/in. |
|----------------|-----------|--------------------------------------|------------------------------------|
| PGK | 12 ga. | 411 16.19 | 7 .29 |

GROUNDING PLATE KIT



The Grounding Plate Kit effectively grounds ProLine or ProLine G2 covers to the frame. The kit consists of one bracket designed to ground the rear cover, a set of brackets to ground the top and side covers, and hardware to secure the brackets to the frame. The brackets are constructed from 24 gauge 304 stainless steel.

Please note that if electrical devices are to be installed on the cover(s), grounding wires are required as defined in NFPA 79. It is recommended to use Grounding Kit PGK under these circumstances.

BULLETIN: P40

Standard Product

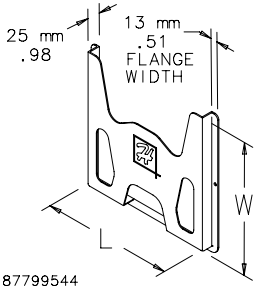
| Catalog Number | Description |
|----------------|---------------------|
| P2AGPK | Grounding Plate Kit |

DATA POCKETS



Provides a convenient place to store wiring diagrams, operation manuals and other documentation inside the enclosure. Adhesive-backed pockets mount inside the solid enclosure cover. Mounting hardware included. Thermoplastic pockets are black and have cut-away areas for easy inspection of contents.

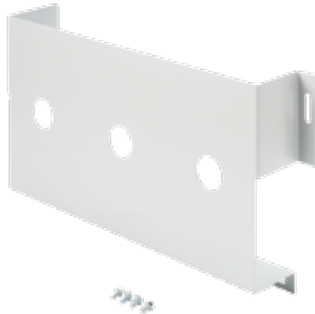
BULLETIN: A80DP



| Catalog Number | Description | L in./mm | W in./mm |
|----------------|--------------|--------------|--------------|
| ADP1 | Small pocket | 6.00 152 | 6.00 152 |
| ADP2 | Large pocket | 12.00 305 | 12.00 305 |

Use ADP2 when A = 24 and B = 30

STEEL DATA POCKET



APPLICATION

Provides a convenient place to store wiring diagrams, operation manuals and other documentation inside the enclosure.

SPECIFICATIONS

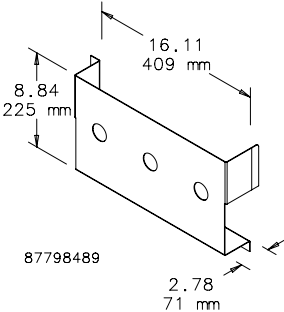
- Steel Data Pocket fastens to the bottom of the door
- Door Bar Grid Straps (purchased separately) must be used to change the vertical mounting position of the data pocket

FINISH

- Polyester powder paint; RAL 7035 textured light gray standard
- Custom colors available

BULLETIN: P40

| Catalog Number | Description |
|----------------|-------------------|
| P2ADPS1 | Steel Data Pocket |



FOLDING SHELF



APPLICATION

The folding shelf can be used on the exterior or the interior of a door to provide a convenient surface for computers, tools or paperwork.

SPECIFICATIONS

- Mounts to door using Door Bar Grid Straps (sold separately)
- Locks in two positions - 90 degrees as a shelf and 15 degrees as a writing surface.
- Holds up to 30lb (13.6kg)
- 16 gauge steel with 12 gauge brackets

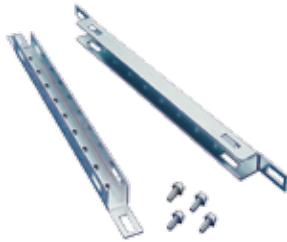
FINISH

- Polyester powder paint; RAL 7035 textured light gray standard
- Custom colors available

BULLETIN: P20

| Catalog Number | Description |
|----------------|--|
| PSHDM | Fits door widths 600, 700, 800 and 1000 mm |

DOOR BAR GRID STRAPS



APPLICATION

The ProLine G2 Door Bar Grid Straps are used to mount accessories to the door.

SPECIFICATIONS

- Straps mount to the door bar
- Load rating: 100 lbs (45.4 kg)
- 16 gauge (1.5 mm), mild steel

FINISH

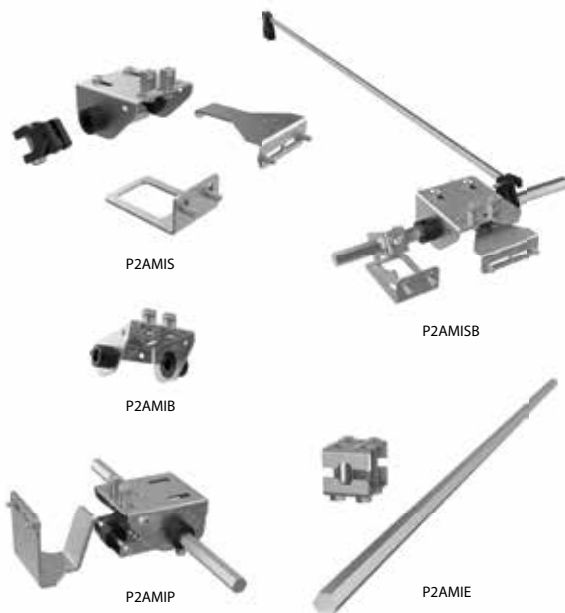
- Plated

BULLETIN: P40

| Catalog Number | W mm/in. | Fits Frame Width mm |
|----------------|-------------|------------------------|
| P2GD4 | 308 12.1 | 400 |
| P2GD5 | 408 16.1 | 500 |
| P2GD6 | 508 20.0 | 600 |
| P2GD7 | 608 23.9 | 700 |
| P2GD8 | 708 27.9 | 800 |
| P2GD9 | 808 31.8 | 900 |
| P2GD10 | 908 35.7 | 1000 |

Frame Width dimensions are nominal mm.

PROLINE G2 MECHANICAL INTERLOCK



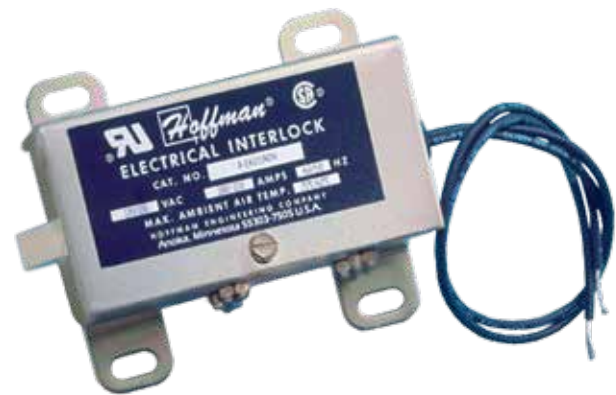
The Mechanical Interlock solution and associated components have been redesigned to simplify installation and increase operator safety. The solution is based around a ½-in (~13 mm) Aluminum Hex Rod, which feeds through door actuators positioned only at the top of the enclosure(s). The door-mounted activator brackets engage with the actuator(s), also installed in series is a hook and capture system: the combination of actuator and hook increases safety by preventing system re-energization without closure of all secondary doors and the primary door.

The components can be combined to safely interlock any number of enclosure configurations, including applications where a rear door or series of doors are present. Note that interlock components will work with all door options (solid single, overlapping double, window, and disconnect), mounting on the upper door bar near the center to provide maximum security. Consult installation instructions to determine which components would be required to safely interlock a defined solution.

BULLETIN: P40

| Catalog Number | Description |
|----------------|--------------------------|
| P2AMIP | Primary Door Kit |
| P2AMIS | Secondary Door Kit |
| P2AMISB | Secondary Door Kit, Back |
| P2AMIE | Extension Kit, Standard |
| P2AMIEL | Extension Kit, Long |
| P2AMIB | Support Bracket |

ELECTRICAL INTERLOCK



INDUSTRY STANDARDS

UL Component Recognized

CSA Certified

APPLICATION

Provides positive internal safety lockout on electrical enclosures while the equipment is energized. Catalog numbers AEK115, AEK230 and AEK460 are used with standard Hoffman door latching mechanisms. When energized, these interlocks prevent the door handle from being turned to open the door. The interlock fits either clockwise or counterclockwise handles in the following enclosures:

- 1. All two-door Type 4 and 12 enclosures
- 2. All Type 4X with 3-point latch enclosures
- 3. Free-stand Type 12 enclosures
- 4. All single-door Type 12 enclosures with latch kits installed

The above interlocks will fit the following enclosures, but modifications are required. Consult the factory for more information.

- 1. Two-Door Enclosures for Flange-Mounted Disconnects, Type 12
- 2. Heavy Duty Free-Stand Enclosures for Flange-Mounted Disconnects, Type 12
- 3. Modular Enclosures for Flange-Mounted Disconnects, Type 12
- 4. Multi-Door Enclosures, Type 12

The interlocks will also fit most Hoffman custom enclosures with door latching mechanisms similar to the mechanisms used on the preceding enclosures.

Non-NDH style electrical interlocks will not fit Concept Enclosures or Bulletin A25 and A26 Enclosures. Interlocks are not designed to be used in place of the standard door or cover latch.

Catalog numbers AEK115NDH, AEK230NDH and AEK460NDH are designed to be used on some Hoffman enclosures and boxes which have exterior latching only. When energized, these interlocks will prevent the enclosure door from being opened. They fit on the door or cover of the following enclosures:

- 1. One-door Type 4 and 4X enclosures
- 2. Two-door Type 4 and 4X enclosures
- 3. One-door Type 12 enclosures
- 4. Larger sizes of junction boxes
- 5. Type 1 and large Type 1 enclosures

The above interlocks also fit in most Hoffman custom enclosures and boxes which have doors or covers hinged similar to doors or covers on the preceding enclosures.

Installation

Interlock mounts on bracket attached to door bar on inside of enclosure door.

SPECIFICATIONS

- Rugged steel construction and plated finish. Solenoids are rated for continuous duty and will stand up under heavy industrial use.
- Packaged complete with a solenoid assembly, mounting bracket and instructions for field installation.

Door handles and latching mechanisms are not included.

BULLETIN: P20DC

| Catalog Number | A @ 120 V/60 Hz Normal/Inrush | A @ 240 V/60 Hz Normal/Inrush | A @ 480 V/60 Hz Normal/Inrush | A @ 110 V/50 Hz Normal/Inrush | A @ 220 V/50 Hz Normal/Inrush | A @ 440 V/50 Hz Normal/Inrush |
|----------------|----------------------------------|----------------------------------|----------------------------------|----------------------------------|----------------------------------|----------------------------------|
| PEK115NDH | .100/.63 | | | .120/.69 | | |
| PEK230NDH | | .050/.32 | | | .060/.35 | |
| PEK460NDH | | | .025/.16 | | | .030/.18 |

