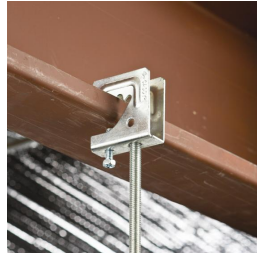
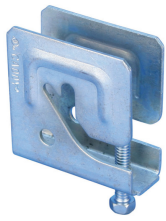
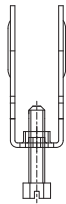
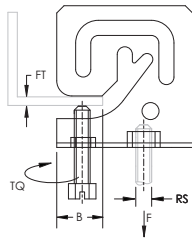


PH Multi-Purpose Purlin Clamp – PH4



- Attaches to bottom of purlins and beams to support threaded rod



Part Number	PH4
Material	Steel
Finish	Electrogalvanized
Rod Size (RS)	1/4"
Flange Thickness (FT)	1/4" Max
B	3/4" Min
Torque (TQ)	30 in lb
Static Load 1 (F1)	200 lb
Static Load 2 (F2)	160 lb
Nut Included	No
Certifications	cULus
Standard Packaging Quantity	25 pc
UPC	78285634773

A jam nut is required for fire protection applications.

Refer to Static Load 1 when attaching to C and Z purlins. Refer to Static Load 2 when attaching to a flat flange.

Recognizing that torque wrenches are generally not used or available on many job sites, the setscrew should be tightened so it contacts the I-beam and then an additional 1/4 to 1/2 turn added.

UL, UR, cUL, cUR, cULus and cURus are registered certification marks of UL LLC.

WARNING

Pentair products shall be installed and used only as indicated in Pentair's product instruction sheets and training materials. Instruction sheets are available at erico.pentair.com and from your Pentair customer service representative. Improper installation, misuse, misapplication or other failure to completely follow Pentair's instructions and warnings may cause product malfunction, property damage, serious bodily injury and death and/or void your warranty.

© 2017 Pentair All rights reserved

Pentair, CADDY, CADWELD, CRITEC, ERICO, ERIFLEX, ERITECH and LENTON are owned by Pentair or its global affiliates.

All other trademarks are the property of their respective owners. Pentair reserves the right to change specifications without prior notice.

