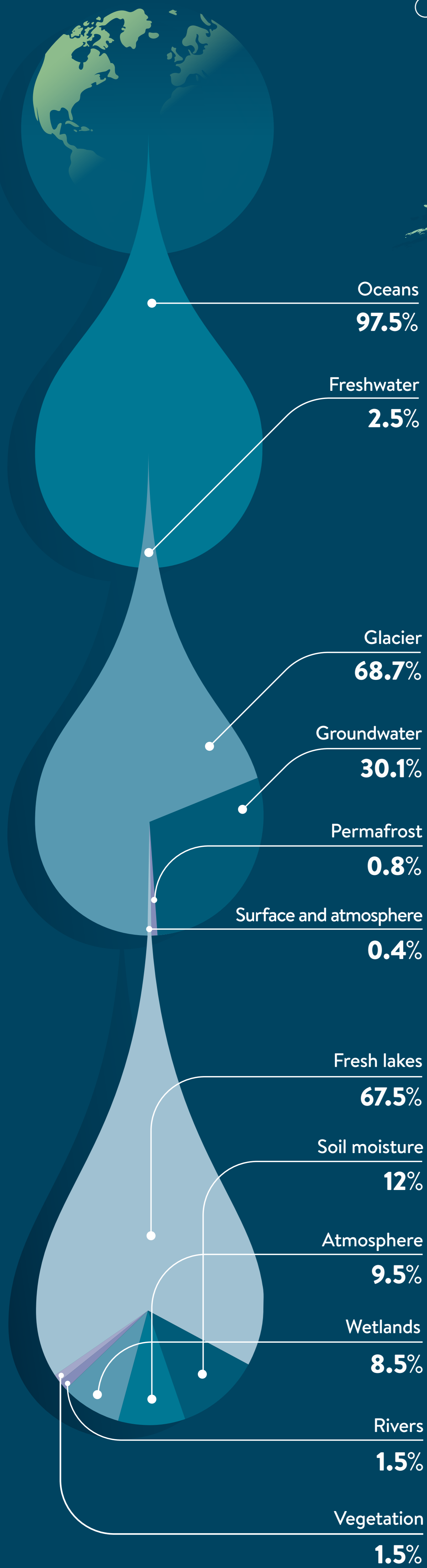


WATER PRESSURE

DISTRIBUTION OF THE EARTH'S WATER



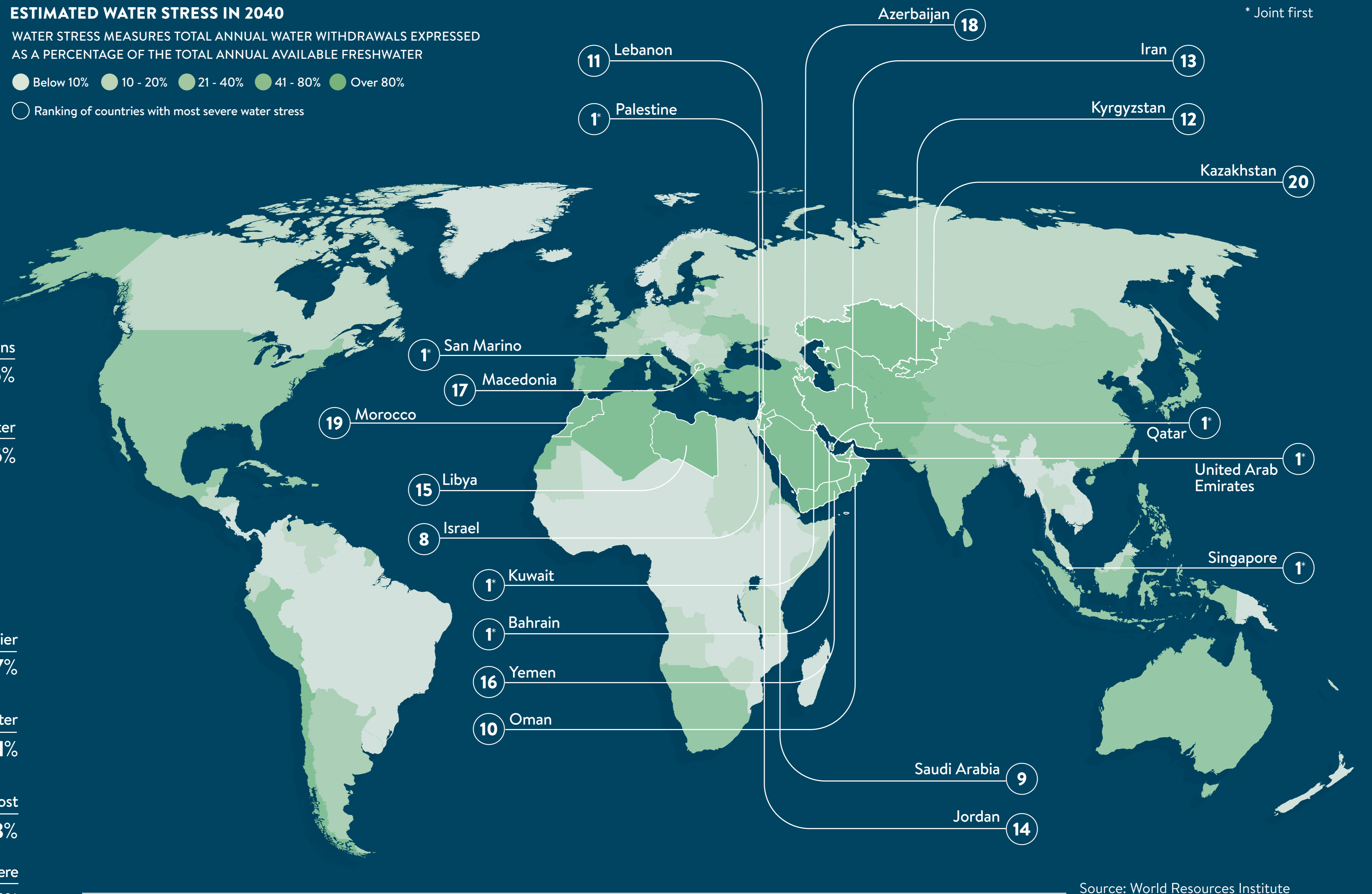
Source: World Bank

ESTIMATED WATER STRESS IN 2040

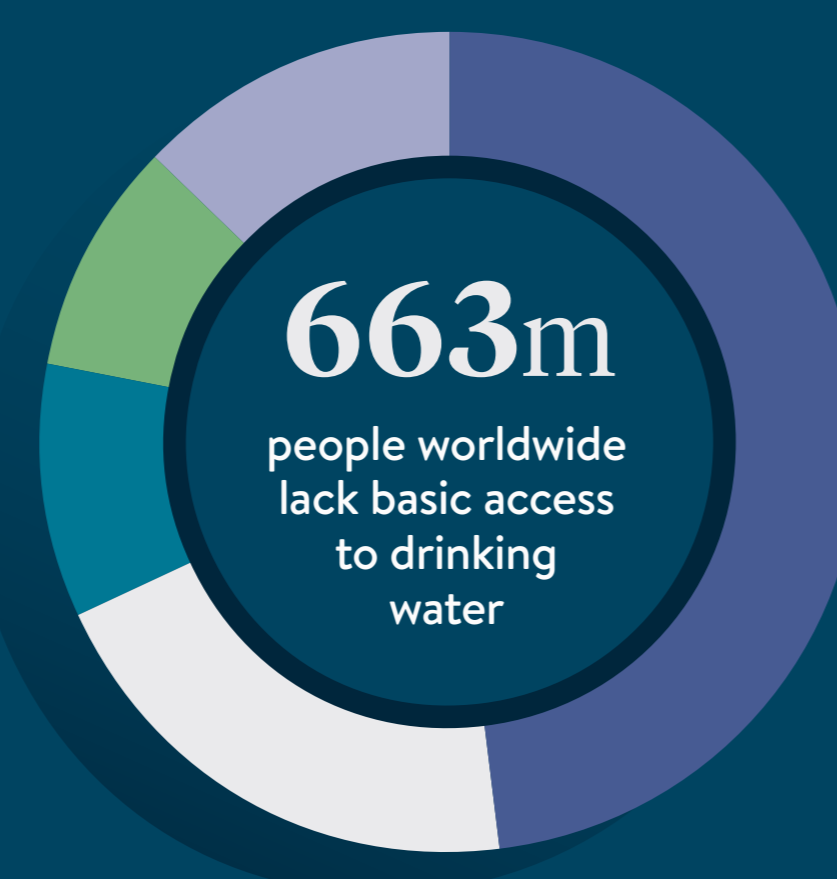
WATER STRESS MEASURES TOTAL ANNUAL WATER WITHDRAWALS EXPRESSED AS A PERCENTAGE OF THE TOTAL ANNUAL AVAILABLE FRESHWATER

● Below 10% ● 10 - 20% ● 21 - 40% ● 41 - 80% ● Over 80%

○ Ranking of countries with most severe water stress



Source: World Resources Institute



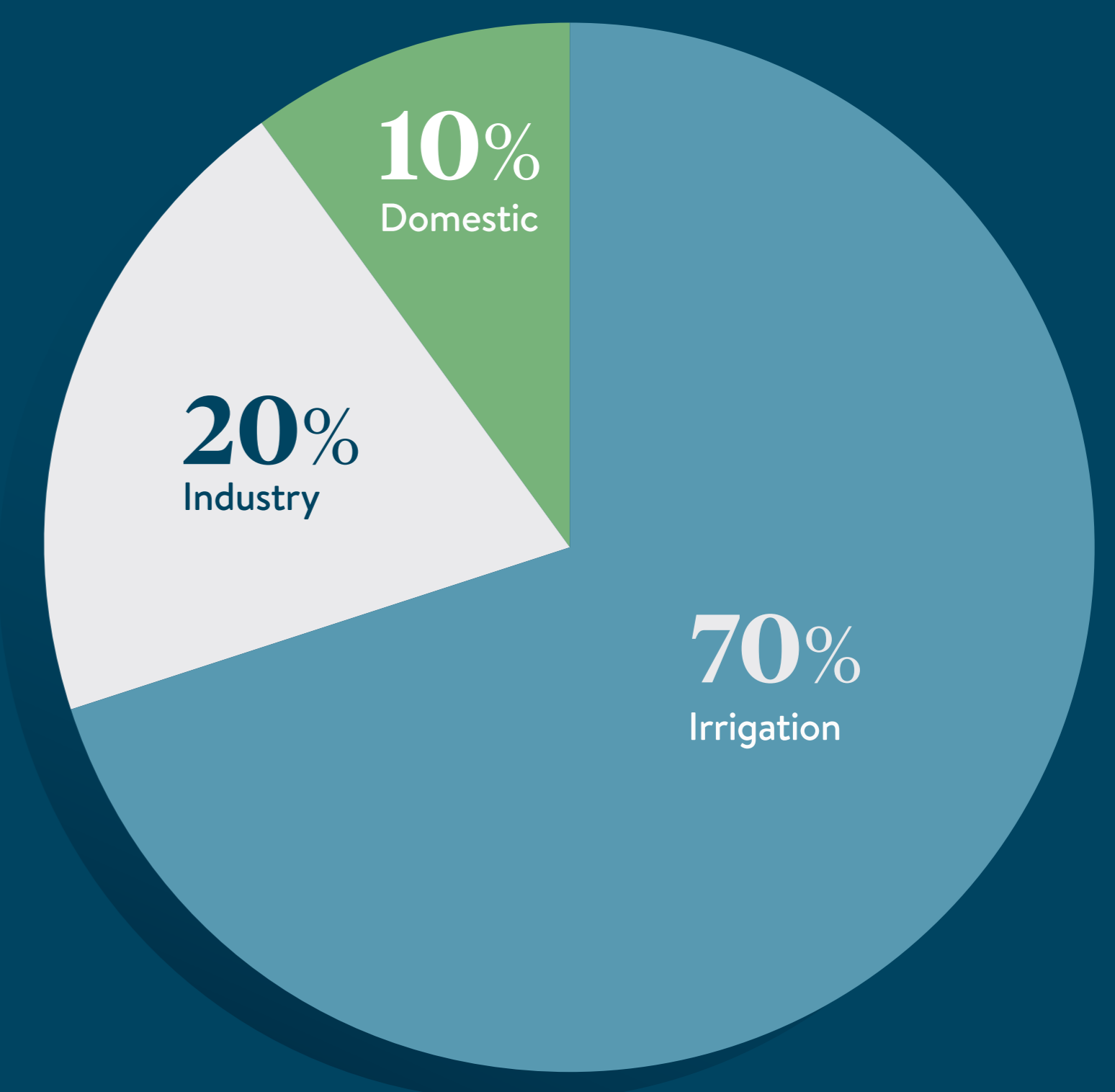
- Sub-Saharan Africa
- South Asia
- East Asia
- South-East Asia
- Other regions



- South Asia
- Sub-Saharan Africa
- East Asia
- South-East Asia
- Latin America and the Caribbean
- Other regions

Source: World Health Organization 2016

ESTIMATED GLOBAL FRESHWATER USE



Source: UN Water 2014