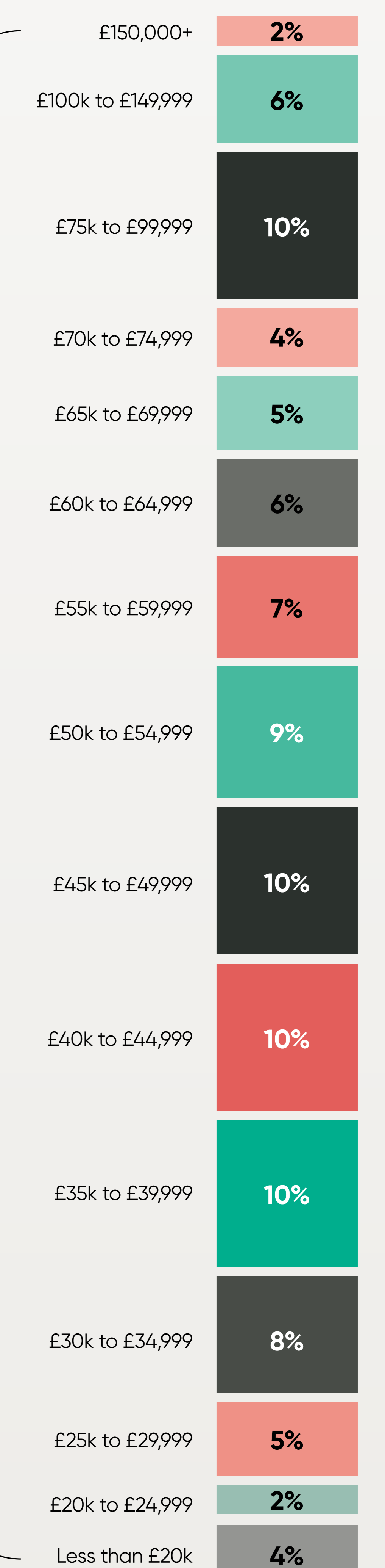
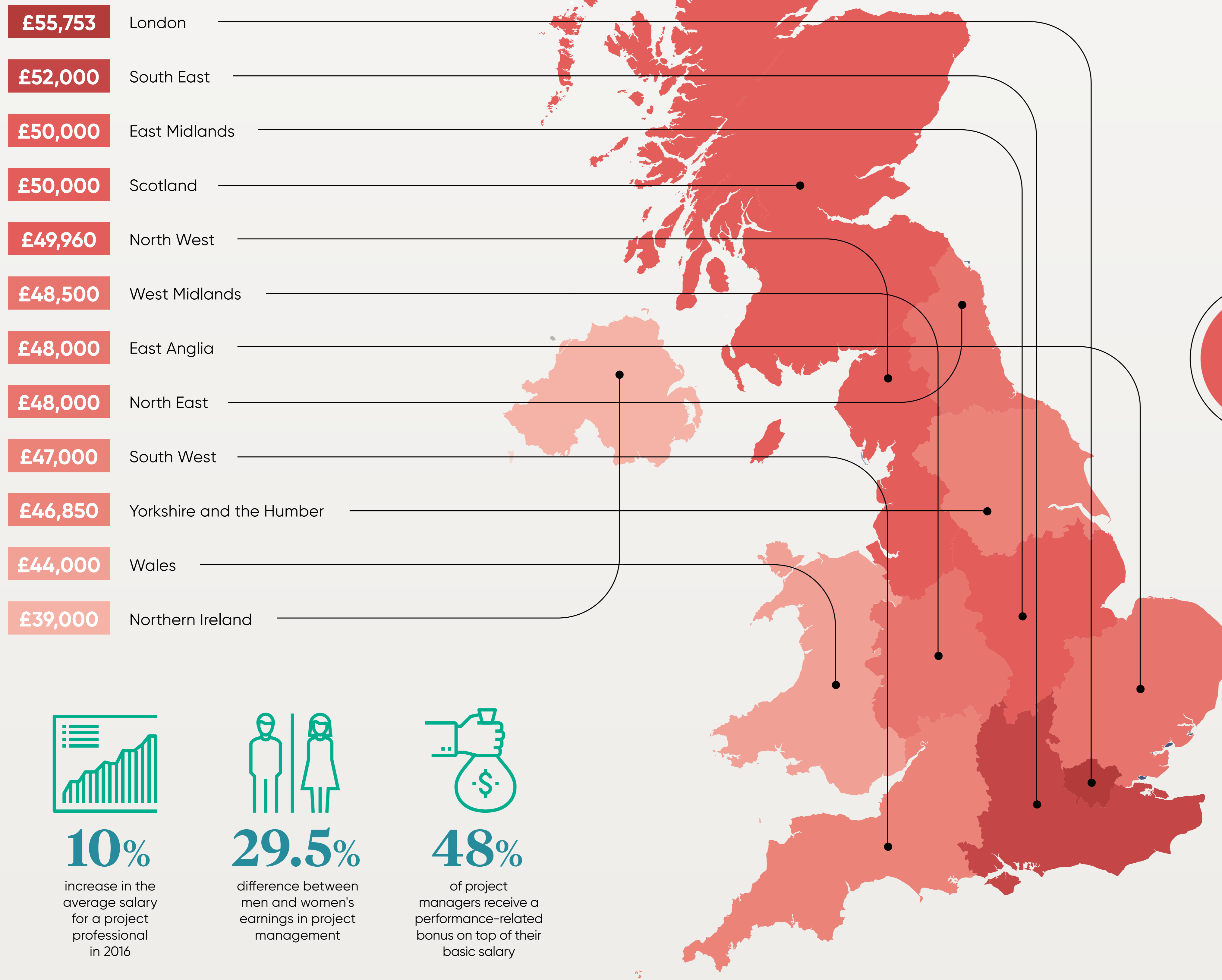


# PAY CHEQUES FOR PROJECTS

Salaries are an important factor in gauging the outlook for an industry and the 10 per cent jump in average project management wages over 2016 shows that the sector is in good health

## AVERAGE BASE SALARY OF PROJECT PROFESSIONALS

### UK REGIONAL SALARY VARIATIONS



**10%**

increase in the average salary for a project professional in 2016



**29.5%**

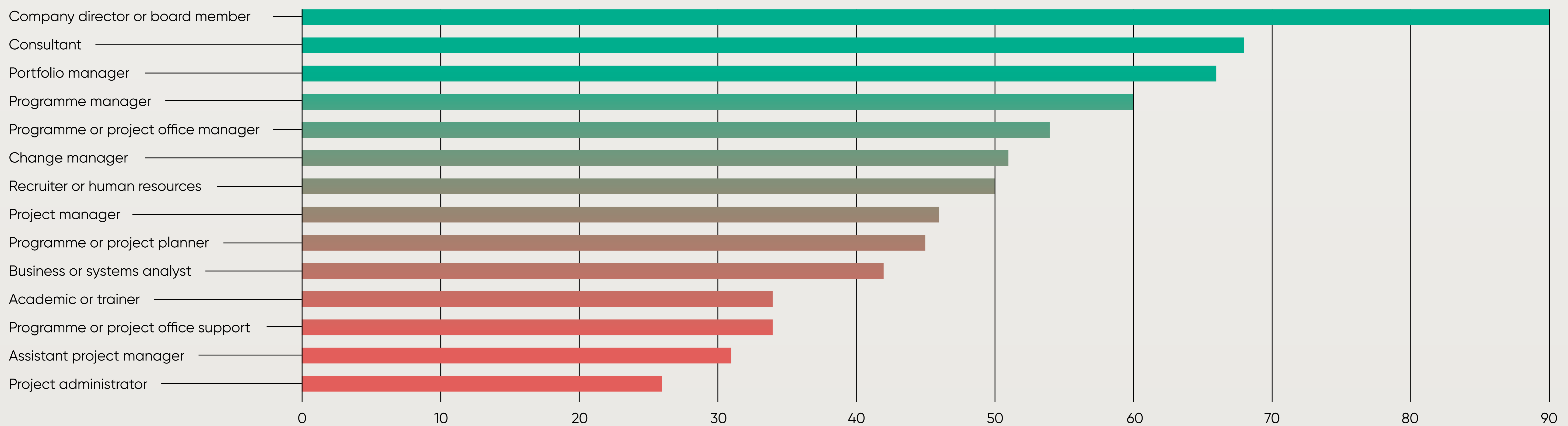
difference between men and women's earnings in project management



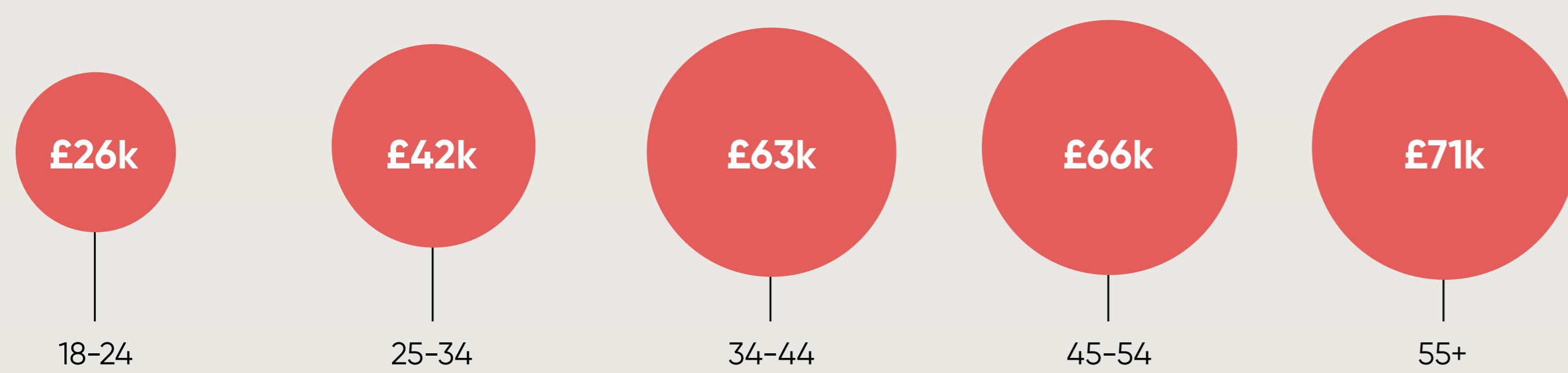
**48%**

of project managers receive a performance-related bonus on top of their basic salary

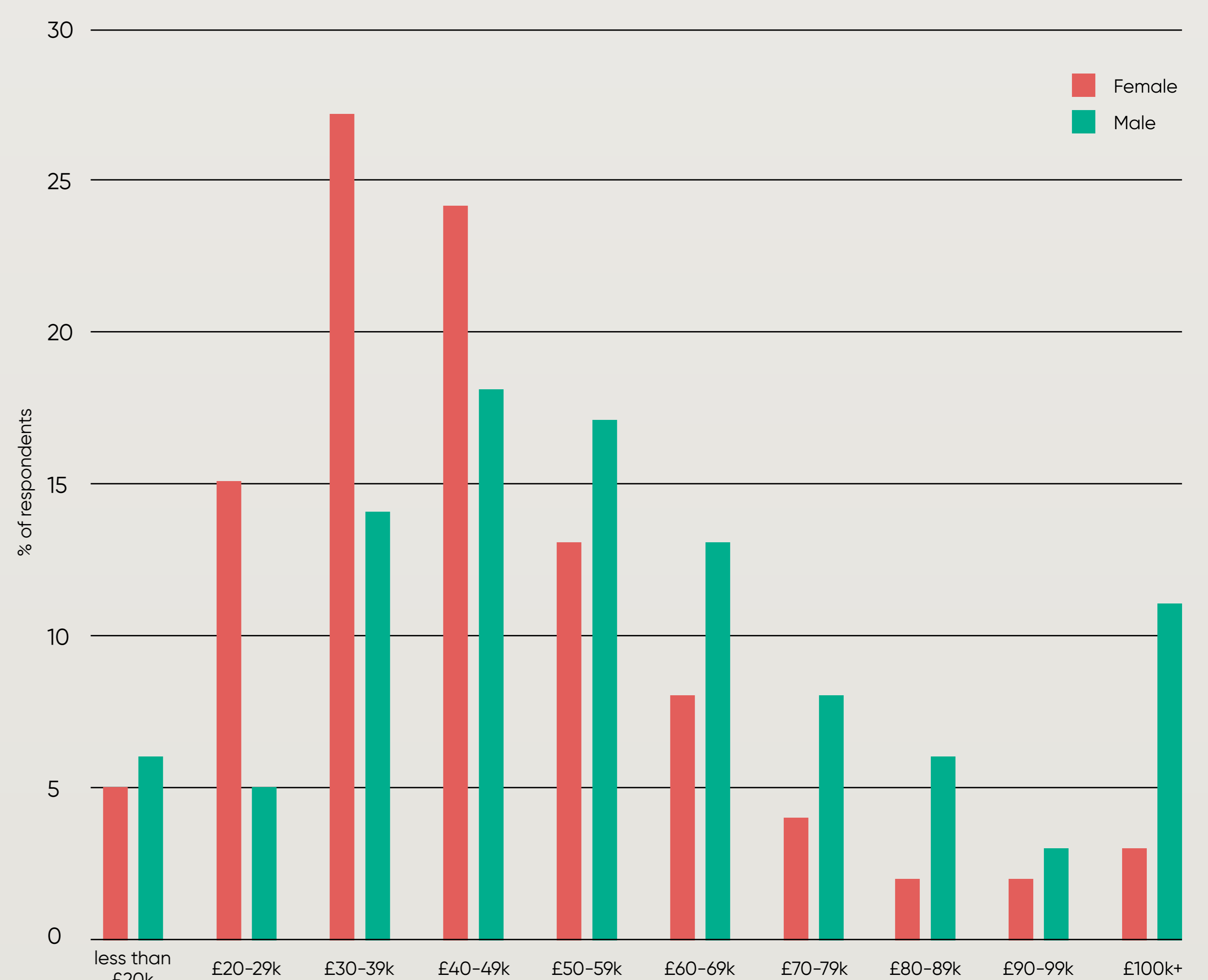
### BASIC SALARY BY ROLE (£k)



### UK SALARY VARIATIONS BY AGE



### EARNINGS BY GENDER



### HOW DO QUALIFICATIONS AND MEMBERSHIP LEVEL AFFECT SALARY?

