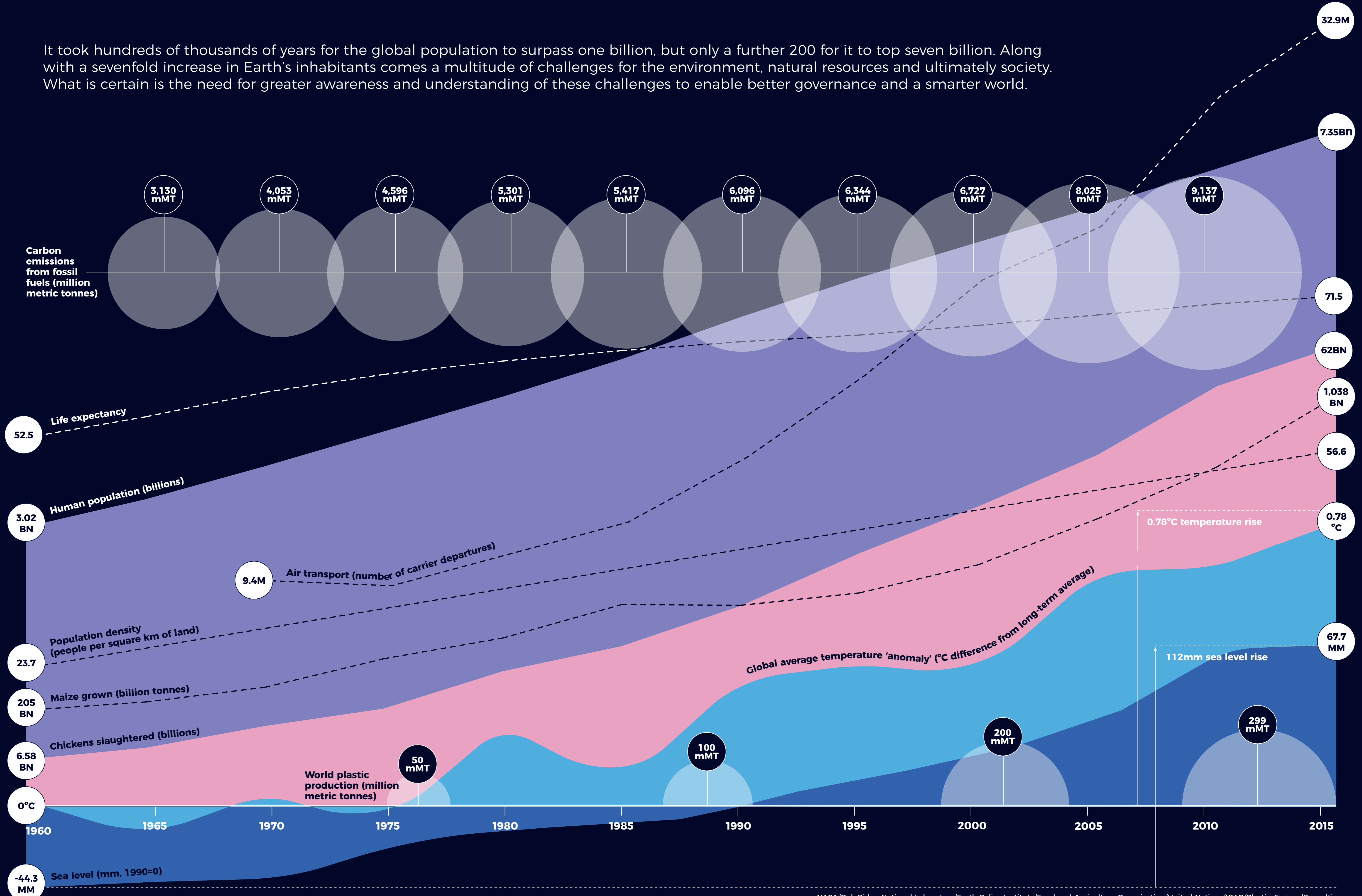


IMPACT OF POPULATION ON PLANET

It took hundreds of thousands of years for the global population to surpass one billion, but only a further 200 for it to top seven billion. Along with a sevenfold increase in Earth's inhabitants comes a multitude of challenges for the environment, natural resources and ultimately society. What is certain is the need for greater awareness and understanding of these challenges to enable better governance and a smarter world.



NASA/Oak Ridge National Laboratory/Earth Policy Institute/Food and Agriculture Organization/United Nations/ICAO/PlasticsEurope/Consultic