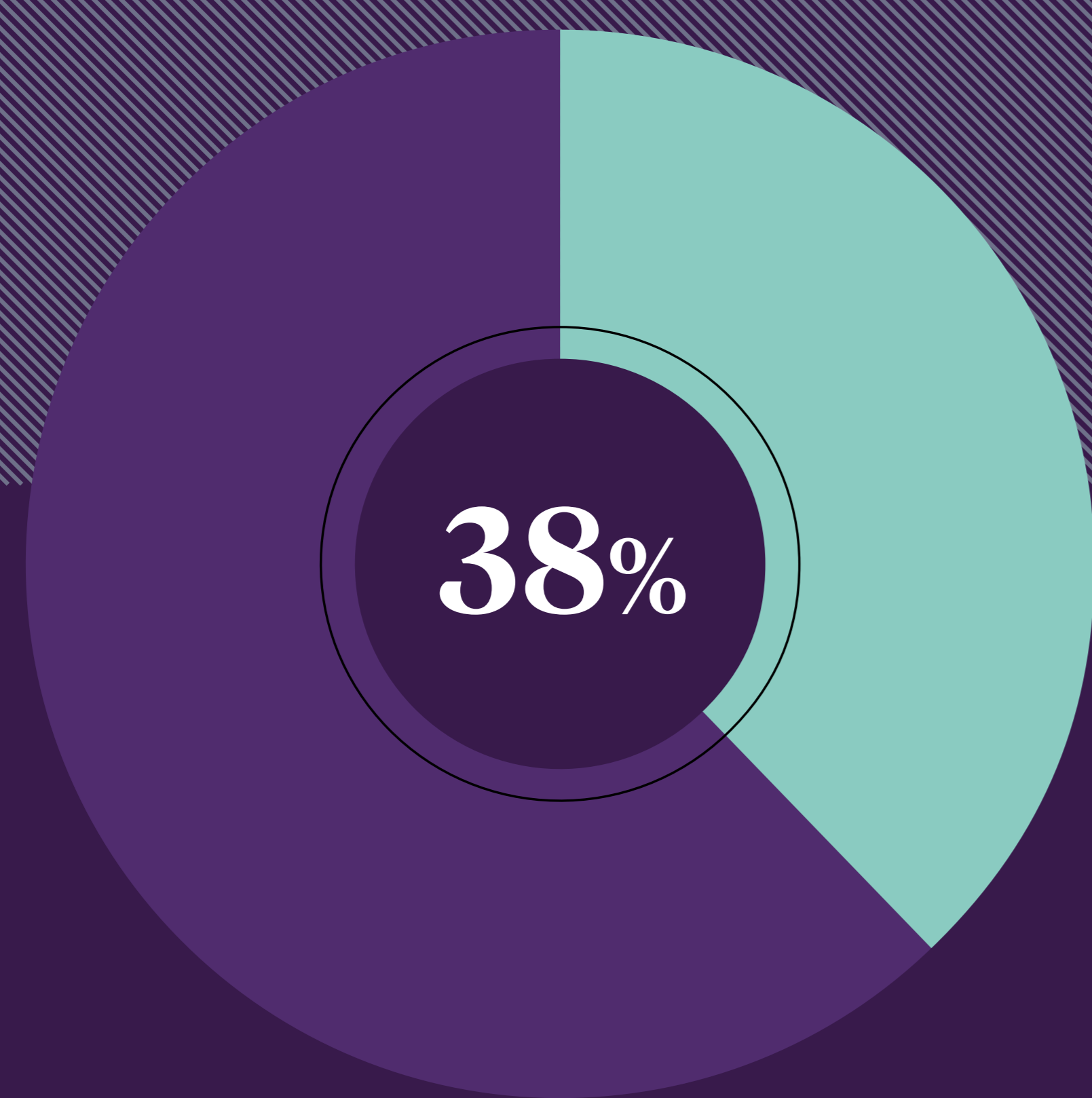
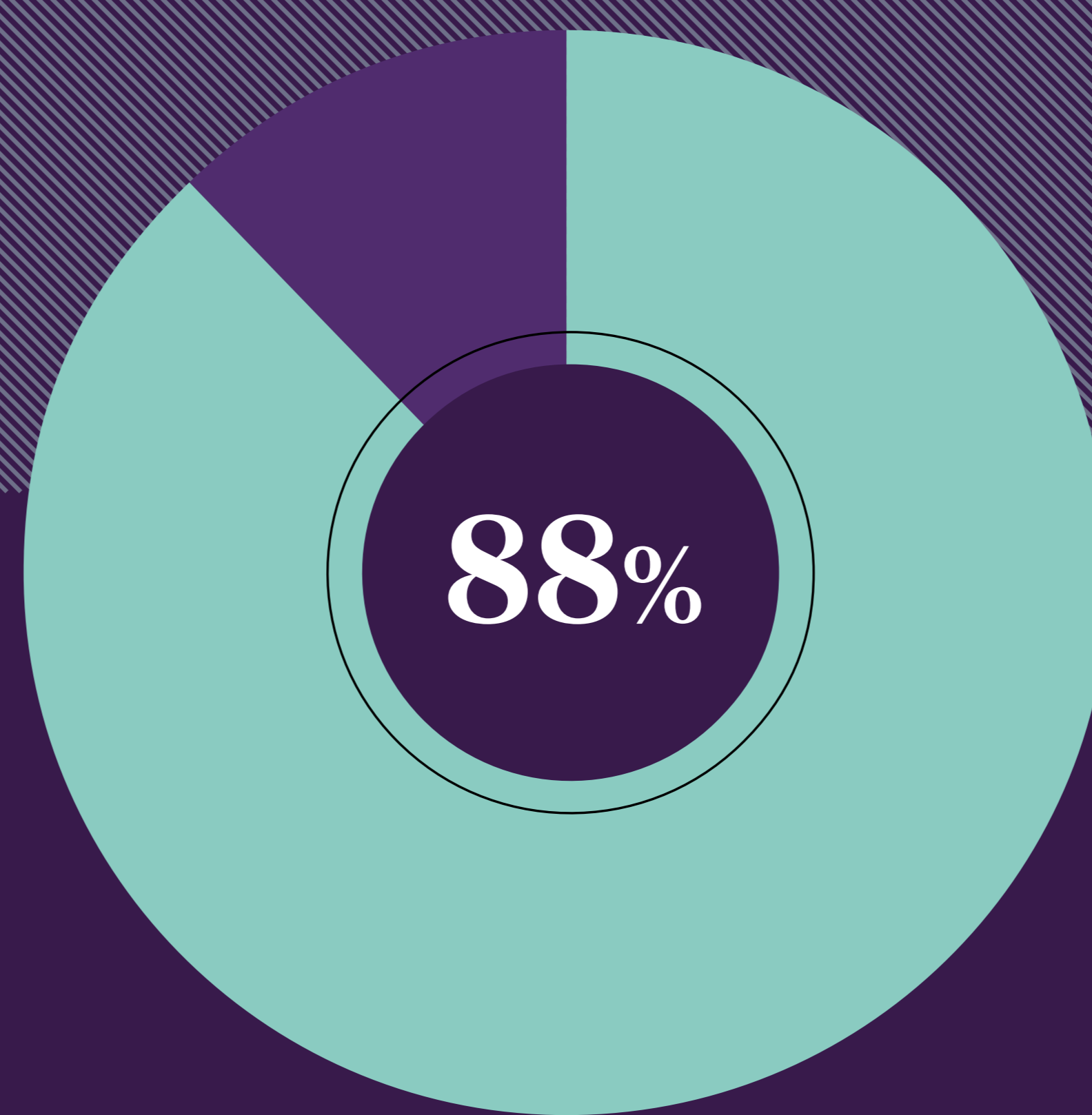


ARTIFICIALLY INTELLIGENT BUSINESS



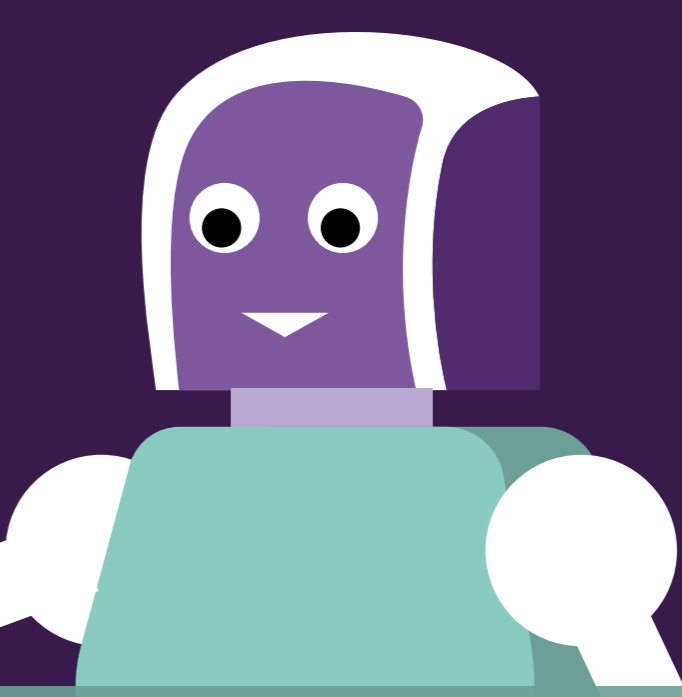
of businesses are using AI technologies in the workplace

Narrative Science 2016



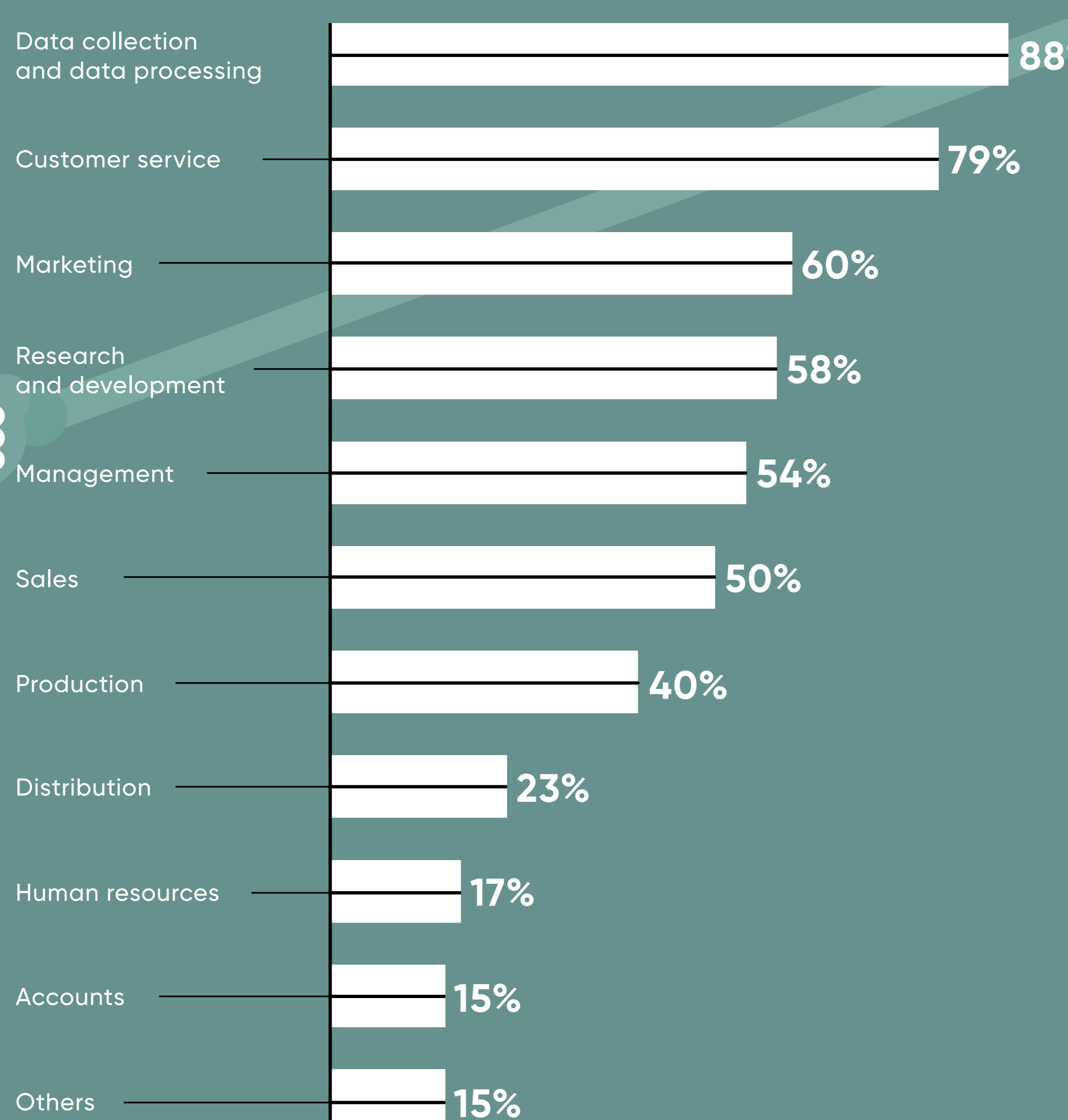
of those that don't use AI said they are using technologies which rely on AI

Artificial intelligence is already extensively used by enterprises, both directly and indirectly, and has had a profound effect on how many major industries operate. Here is an overview of AI adoption levels and surveyed opinions of senior decision-makers and technology executives to show its impact on organisations



AREAS OF THE BUSINESS PLANNING TO INVEST IN AI

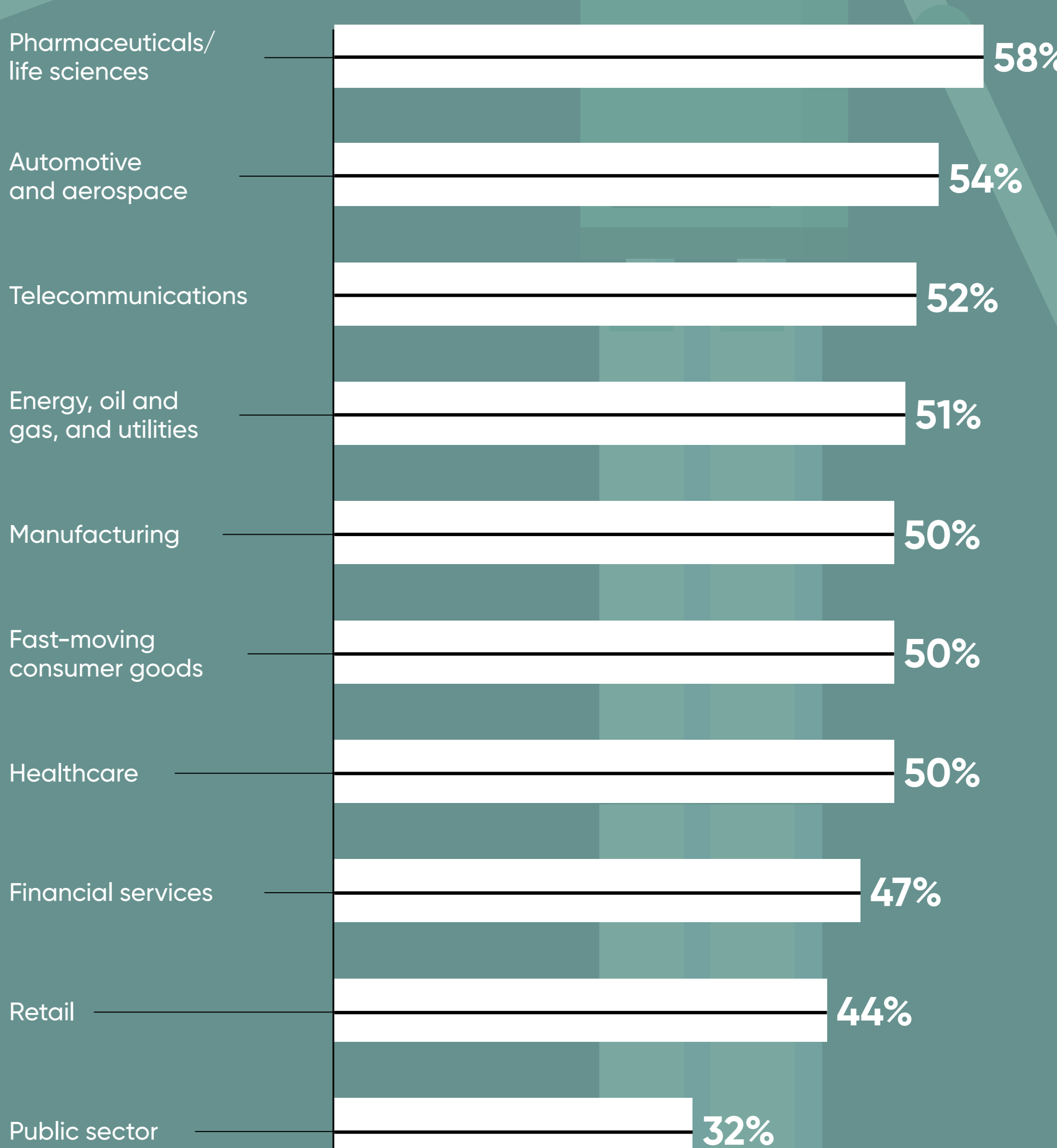
BUSINESS LEADERS LISTED THEIR TOP FIVE CHOICES



AI Business 2017

AI MATURITY LEVELS BY SECTOR

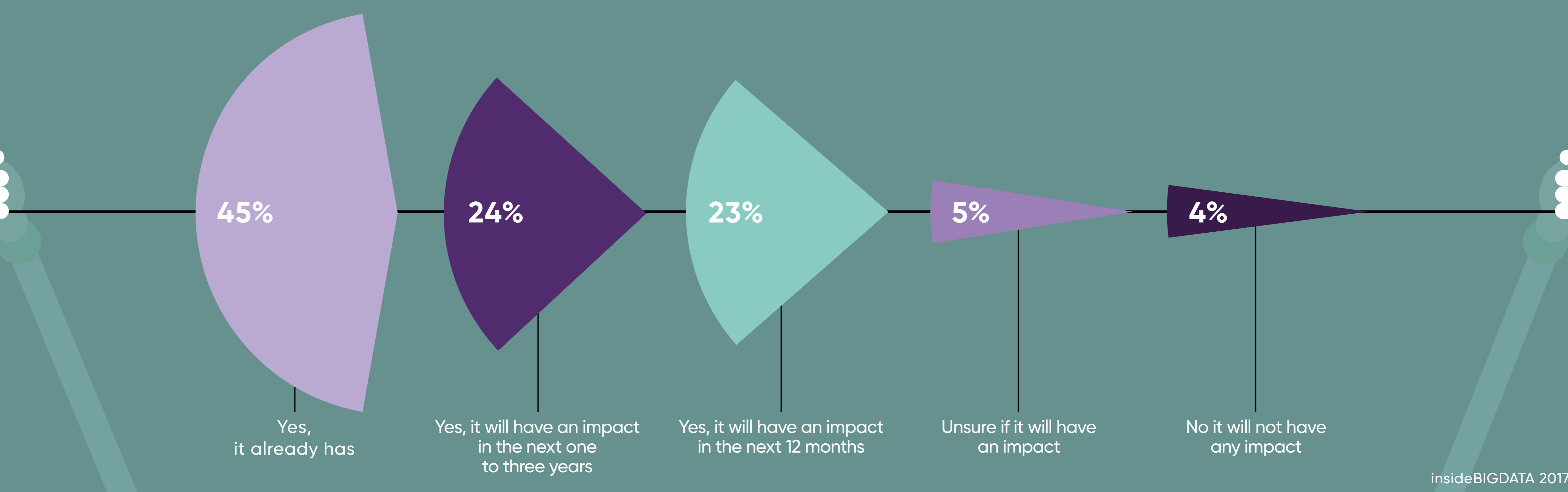
SECTORS WERE RANKED ON OPPORTUNITIES AND CHALLENGES IN ADOPTING AI, AND GIVEN A SCORE OF ZERO TO 100 PER CENT



Infosys 2017

BUSINESS IMPACT OF AI

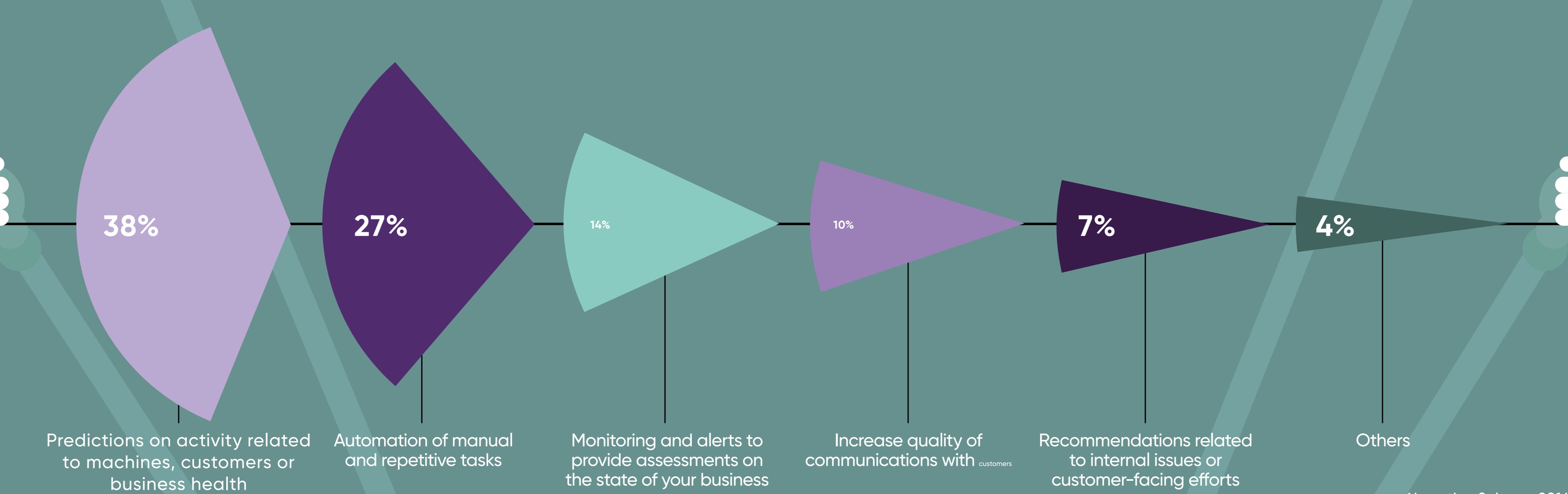
WILL AI/MACHINE-LEARNING/DEEP-LEARNING HAVE AN IMPACT ON THE WORK YOU ARE DOING?



insideBIGDATA 2017

MOST IMPORTANT BENEFIT THAT AI SHOULD PROVIDE BUSINESSES

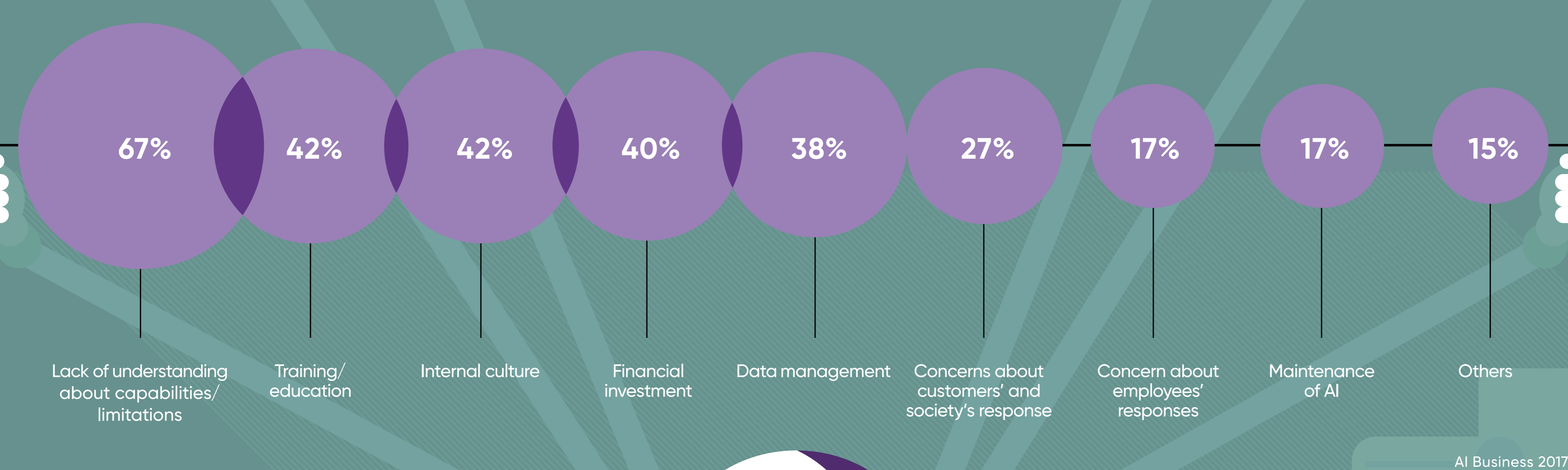
TOP CHOICE OF BUSINESS AND TECHNOLOGY EXECUTIVES



Narrative Science 2016

BIGGEST CHALLENGES/BARRIERS TO CHOOSING AND IMPLEMENTING AI

PERCENTAGE OF BUSINESS LEADERS THAT RATED THE FOLLOWING A CHALLENGE OR BARRIER



AI Business 2017

