

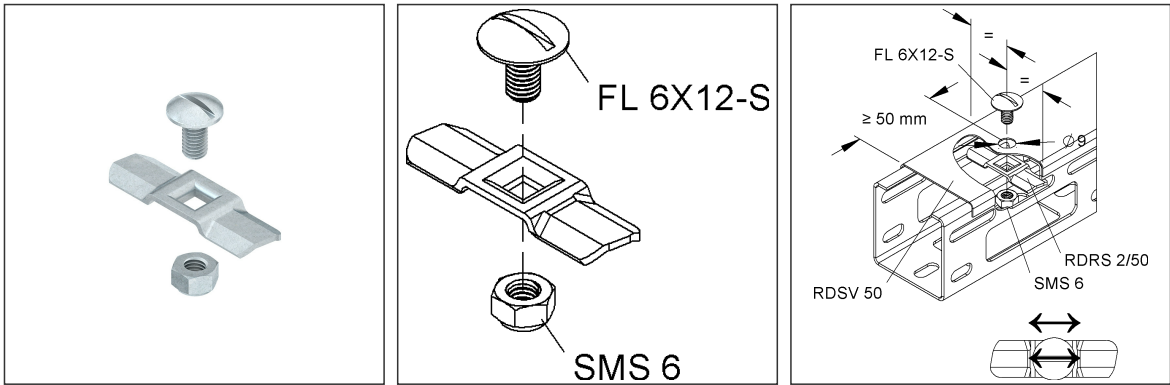
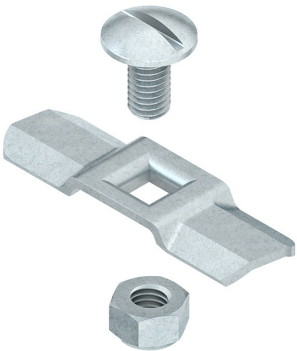
Turning Bolt

incl. locking nut acc. to DIN EN ISO 10511

RDRS 2/50

EAN Code: 4013339270101
Smallest packaging unit: 20 pcs.

the photorealistic images are to be considered as reference images



Article Description

Turning bolt double with locking nut acc. to DIN EN ISO 10511, steel, pre-galvanised according to DIN EN 10346, incl. accessories

Incl. accessories

1 FL 6X12-S V, 1 SMS 6 V

Additional Price Information

Article group	N13
quantity unit	pcs.

Weight

Weight per quantity unit	13 g / pcs.
Weight in kg per 100	1,3 kg / 100pcs.

Technical Datasheet

Cable Tray System

RDRS 2/50

the photorealistic images are to be considered as reference images

Physical Article Dimensions

Height	15.00 mm
Width	14.00 mm
Depth/length	48.00 mm

Packing Dimension

20 pieces = 1		✓ VP1-smallest packaging unit (PU) ✓ VP1-preferred PU			
Lenght	74.00 mm	Width	72.00 mm	Height	55.00 mm
Gross weight	0,28 kg	Volume	0,000 m³		
Min. quantity	20.00 pcs.	Max. Quantity	20.00 pcs.		

200 pieces = 1 covering box					
Lenght	330 mm	Width	148.00 mm	Height	78.00 mm
Gross weight	2,87 kg	Volume	0,004 m³		
Min. Quantity	200.00 pcs.	Max. Quantity	200.00 pcs.		

9600 pieces = 1					
Lenght	750 mm	Width	750 mm	Height	730 mm
Gross weight	178 kg	Volume	0,411 m³		
Min. Quantity	9.600.00 pcs.	Max. Quantity	9.600.00 pcs.		

Tender Text

Double turning lock, for subsequent or additional installation in the fitting covers of cable trays as well as for distributor tray covers, including galvanised mushroom head screw with slot FL 6X12-S DIN 603 and galvanised safety nut SMS 6 DIN EN ISO 10511. Use outdoors, due to external influences such as wind loads, is only possible with an additional safety device (self-tapping screws, steel band, etc.). When fastening, please note that a minimum distance of ≥ 50 mm to the cover start/end must be maintained.

Furthermore, it must be ensured that the screw head slot is mounted flush with the fastening lug of the turnbuckle plate. This ensures that all twist-locks on the cover are properly closed (position of the screw head slot) at a later date.

Used for : Fitting covers of cable trays

Distribution trough cover RDSV 50

Delivery : unassembled and loose

Material lock : Steel, pre-galvanised acc. to DIN EN 10346

NIEDAX Model No. : RDRS 2/50

EP Material_____ EP Wage_____

Unit price/piece

Safety & Environment

REACH Date	27.06.2024
REACH Info	Conformable
RoHS Info	Conformable

Technical Datasheet

Cable Tray System

RDRS 2/50

the photorealistic images are to be considered as reference images

Origin & International Trade

Country of origin	DE
Customs tariff number	83024900