

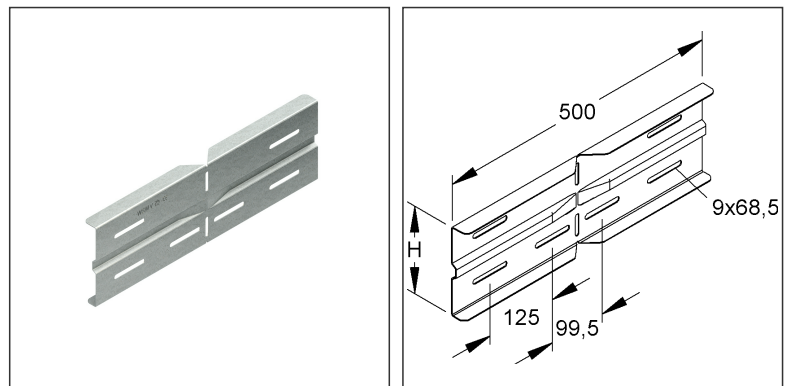
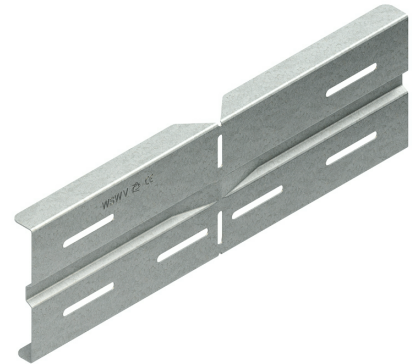
**Angle Connector**

horizontal

**WSWV 150 E3**

EAN Code: 4013339726103  
 Smallest packaging unit: 10 pcs.

the photorealistic images are to be considered as reference images



**Article Description**

Angle connector, horizontal, 151,5x500 mm, stainless steel, material code: 1.4301, AISI 304, incl. accessories

**Incl. accessories**

6 FLM 8X16 E3

**Additional Price Information**

Article group	N13
quantity unit	pcs.

**Weight**

Weight per quantity unit	1,307 kg / pcs.
Weight in kg per 100	131 kg / 100pcs.

# Technical Datasheet

## Long Span Cable Tray

WSWV 150 E3

the photorealistic images are to be considered as reference images

### Physical Article Dimensions

Height	154.50 mm
Width	30.00 mm
Depth/length	500 mm

### Packing Dimension

<b>10 pieces = 1 carton</b>		✓ VP1-smallest packaging unit ( PU)	✓ VP1-preferred PU		
Lenght	550 mm	Width	185.00 mm	Height	140.00 mm
Gross weight	14 kg	Volume	0,014 m <sup>3</sup>		
Min. quantity	10.00 pcs.	Max. Quantity	10.00 pcs.		

<b>400 pieces = 1 pallet</b>					
Lenght	1200 mm	Width	800 mm	Height	1000 mm
Gross weight	561 kg	Volume	0,960 m <sup>3</sup>		
Min. Quantity	400.00 pcs.	Max. Quantity	400.00 pcs.		

### Tender Text

Angle connector, horizontal, for creating horizontal angle connections of continuous wide span cable trays/ladders, including proportional fastening accessories made of stainless steel. The equipotential bonding is achieved by bolting to the wide span cable trays/ladder beams as well as the fitting beams. Used for : wide span cable trays/ladders and their fittings with 150 mm edge height

Requirement : 2 pieces per joint

Dimensions (approx. dimensions)

Height H (clear inner dimension) x width W : 151.5 x 500 mm

Material : stainless steel, material no. 1.4301, AISI 304

NIEDAX Model No. : WSWV 150 E3

EP Material \_\_\_\_\_ EP Wage \_\_\_\_\_

Unit price/piece

### Safety & Environment

REACH Date	25.06.2025
REACH Info	Conformable
RoHS Info	Conformable

### Origin & International Trade

Country of origin	DE
Customs tariff number	73089059