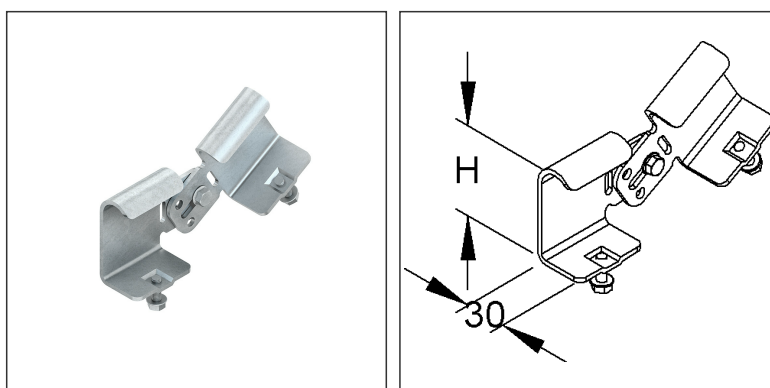
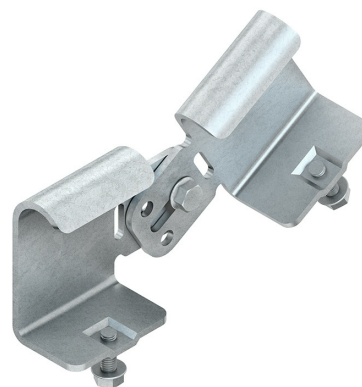


Joint Connector

KRUV 60 F

EAN Code: 4013339850457
 Smallest packaging unit: 10 pcs.

the photorealistic images are to be considered as reference images



Article Description

Joint connector, height 61 mm, steel, hot dip galvanised DIN EN ISO 1461

Additional Price Information

Article group	N13
quantity unit	pcs.

Weight

Weight per quantity unit	340 g / pcs.
Weight in kg per 100	34 kg / 100pcs.

Physical Article Dimensions

Height	85.50 mm
Width	43.00 mm
Depth/length	147.50 mm

Technical Datasheet

Cable Ladder System

KRUV 60 F

the photorealistic images are to be considered as reference images

Packing Dimension

10 pieces = 1 carton		✓ VP1-smallest packaging unit (PU)	✓ VP1-preferred PU		
Lenght	250 mm	Width	350 mm	Height	40.00 mm
Gross weight	3,4 kg	Volume	0,004 m ³		
Min. quantity	10.00 pcs.	Max. Quantity	10.00 pcs.		

Tender Text

Angle splice plate, for creating vertical/horizontal angle connections of continuous Allround cable ladders, including hot-dip galvanised proportional fastening accessories. for Allround cable ladders : KRC... KRO...
Requirement : 2 pieces per connection
Dimensions (approx. dimensions) H x W : 61 x 30 mm
Material : Steel, hot-dip galvanised acc. to DIN EN ISO 1461
NIEDAX Model No. : KRUV 60 F
EP Material_____ EP Wage_____
Unit price/piece

Safety & Environment

REACH Date	25.06.2025
REACH Info	Conformable
RoHS Info	Conformable

Origin & International Trade

Country of origin	NL
Customs tarif number	73089059