

GRP-Cable Tray

pressed, with unperforated side rails, with bottom perforation, with moulded connector

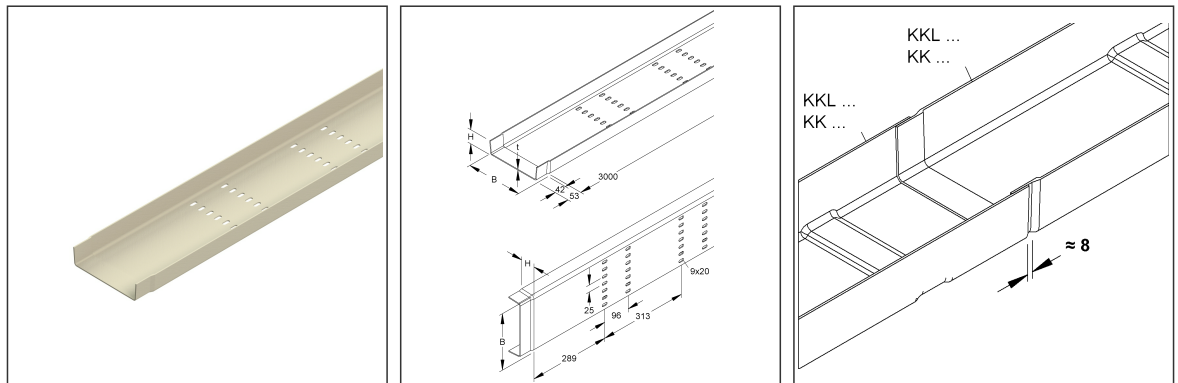
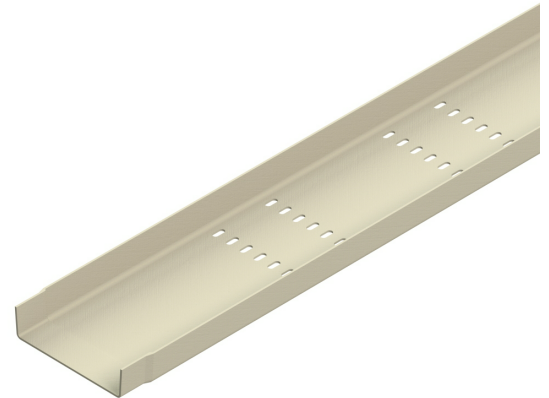
KKL 50.300

EAN Code: 4013339952250

Smallest packaging unit: 3 m

quantity unit: m M

the photorealistic images are to be considered as reference images



Article Description

GRP Cable tray, 50x300x3000 mm, w/. moulded connector, perforated, Polyester glasfaserverstärkt, gepresst, RAL 7032, kieselgrau

Additional Price Information

| | |
|---------------|-----|
| Article group | N15 |
| quantity unit | m |

Weight

| | |
|--------------------------|---------------|
| Weight per quantity unit | 2,100 kg / m |
| Weight in kg per 100 | 210 kg / 100m |

Technical Datasheet

Cable Tray System

KKL 50.300

the photorealistic images are to be considered as reference images

Physical Article Dimensions

| | |
|--------------|----------|
| Height | 50.00 mm |
| Width | 300 mm |
| Depth/length | 3000 mm |

Packing Dimension

| | | | | | |
|---------------------------|---------|-------------------------------------|----------------------|--------------------|----------|
| 3 meters = 1 piece | | ✓ VP1-smallest packaging unit (PU) | | ✓ VP1-preferred PU | |
| Lenght | 3000 mm | Width | 300 mm | Height | 50.00 mm |
| Gross weight | 6,3 kg | Volume | 0,045 m ³ | | |
| Min. quantity | 3.00 m | Max. Quantity | 3.00 m | | |

| | | | | | |
|----------------------------|----------|---------------|----------------------|--------|---------|
| 216 meters = 1 rack | | | | | |
| Lenght | 3000 mm | Width | 1162 mm | Height | 1120 mm |
| Gross weight | 552 kg | Volume | 3,904 m ³ | | |
| Min. Quantity | 216.00 m | Max. Quantity | 216.00 m | | |

Tender Text

GRP cable tray, pressed, with unperforated side rails, with moulded connector and eleven-row fastening holes in the bottom, mechanical strength to IEC 61537, please order proportional fastening accessories separately, halogen-free. An expansion distance of 8 mm must be taken into account. Due to the expansion of the material, the following must be observed during installation:

- The cable tray should not be screwed close to or at the joint.
- When screwing the cable tray onto the brackets, a through hole of Ø 9 mm for the FKM 6X20 E4 screws must always be made in the tray.

Article available in various resin mixtures.

Dimensions (approx. dimensions)

H x W : 50 x 300 mm

Material thickness t : 3 mm

Double row bottom perforation : 9 x 20 mm

Row distance : 25 mm

Bottom hole distance Grid dimension : 313 mm

Load bearing capacity F

at a support distance of 1.5 m : 0.3 kN/m

Delivery length : 3000 mm

Usable cross-section : 12496 mm²

Material : UP-GF (glass fibre reinforced polyester)

Colour : pebble grey

RAL : 7032 (similar)

NIEDAX Model no.: KKL 50.300

EP Material _____ EP Wage _____

Unit price/meter

Safety & Environment

| | |
|------------|-------------|
| REACH Date | 25.06.2025 |
| REACH Info | Conformable |
| RoHS Info | Conformable |

Technical Datasheet

Cable Tray System

KKL 50.300

the photorealistic images are to be considered as reference images

Origin & International Trade

| | |
|-----------------------|----------|
| Country of origin | FR |
| Customs tariff number | 39259020 |

Related items

Cover

| Model No. | Description |
|-----------|---|
| KKD 300 | GRP-cover for cable tray/-ladder, 300x3000 mm, Polyester glasfaserverstärkt, gepresst, RAL 7032, kieselgrau |

Barrier strip

| Model No. | Description |
|-------------|---|
| FKM 6X16 E4 | Slotted mushroom head screw w/. nut and washer, M6x16, Edelstahl, Werkstoff-Nr.: 1.4401, 1.4404 |
| KKT 50 | GRP-barrier strip for cable tray, 50x3000 mm, Polyester glasfaserverstärkt, gepresst, RAL 7032, kieselgrau |
| KKT 50/M | GRP-barrier strip for cable tray, 50x3000 mm, pre-assembled, Polyester glasfaserverstärkt, gepresst, RAL 7032, kieselgrau |