

# CPI-aarding en -lijm vlechtwerk, roestvrij staal



High-quality CPI stainless steel grounding and bonding braids can be installed in extremely corrosive environments, like offshore applications or coastal applications. The full range of CPI braids are ideal for applications using stainless steel pipe or tanks, like the food and beverage industry, building industry, transportation, oil and chemical industry.

nVent ERIFLEX offers 316L stainless steel braids and lugs, one of the highest resistant stainless steel options on the market. Our proprietary manufacturing process has been optimized to provide the best braiding, crimping, cutting and punching.

## CERTIFICERINGEN



## KENMERKEN

RoHS-conform

Superior abrasion, corrosion, chemical and UV resistance make CPI braids ideal for outdoor applications

Great for expansion joints where constant movement requires a flexible and durable solution

Ready to use out of the box, eliminates the need for cutting, stripping, crimping and punching

Quick and easy to install

Resistant to vibration and fatigue, reducing maintenance

Will not rust or discolor, so the appearance will never fade or change

Excellent electrical contact

No additional lugs or terminals needed

Non-magnetic material

Recommended by the EMC/EMI directives

Performs to the class C5 (very high) category as per ISO® 12944-2

EAC compliant

Compliant to ISO 6469-1 (Electrically propelled road vehicles - Part 1: Rechargeable energy storage system) - Section 6.2.2 Vibrations

## SPECIFICATIES

**Materiaal:** Roestvrij staal 316L (en 1,4404)

**Certificatiegegevens:** UL® 467

Table 1/2

Catalogusnummer	Artikelnummer	Voldoet aan	Dwarsdoorsnede	Lengte (L)	Grootte van het gat (HS)	A
CPI16-150-8	554277	IEC® 60439.1, IEC® 61439,1	16mm <sup>2</sup>	150mm	8.5 mm	17.5 mm
CPI16-200-8	554278	IEC® 60439.1, IEC® 61439,1	16mm <sup>2</sup>	200mm	8.5 mm	17.5 mm
CPI16-250-8	554279	IEC® 60439.1, IEC® 61439,1	16mm <sup>2</sup>	250mm	8.5 mm	17.5 mm
CPI16-300-8	554280	IEC® 60439.1, IEC® 61439,1	16mm <sup>2</sup>	300mm	8.5 mm	17.5 mm
CPI16-400-8	554282	IEC® 60439.1, IEC® 61439,1	16mm <sup>2</sup>	400mm	8.5 mm	17.5 mm
CPI25-150-10	554299	IEC® 60439.1, IEC® 61439,1	25mm <sup>2</sup>	150mm	10.5 mm	26.5 mm
CPI25-200-10	554300	IEC® 60439.1, IEC® 61439,1	25mm <sup>2</sup>	200mm	10.5 mm	26.5 mm
CPI35-150-12	554321	IEC® 60439.1, IEC® 61439,1	35mm <sup>2</sup>	150mm	13 mm	26.5 mm
CPI25-250-10	554301	IEC® 60439.1, IEC® 61439,1	25mm <sup>2</sup>	250mm	10.5 mm	26.5 mm
CPI16-600-8	554286	IEC® 60439.1, IEC® 61439,1	16mm <sup>2</sup>	600mm	8.5 mm	17.5 mm
CPI25-300-10	554302	IEC® 60439.1, IEC® 61439,1	25mm <sup>2</sup>	300mm	10.5 mm	26.5 mm
CPI35-200-12	554322	IEC® 60439.1, IEC® 61439,1	35mm <sup>2</sup>	200mm	13 mm	26.5 mm
CPI35-250-12	554323	IEC® 60439.1, IEC® 61439,1	35mm <sup>2</sup>	250mm	13 mm	26.5 mm
CPI25-400-10	554304	IEC® 60439.1, IEC® 61439,1	25mm <sup>2</sup>	400mm	10.5 mm	26.5 mm
CPI35-300-12	554324	IEC® 60439.1, IEC® 61439,1	35mm <sup>2</sup>	300mm	13 mm	26.5 mm
CPI50-150-12	554343	IEC® 60439.1, IEC® 61439,1	50mm <sup>2</sup>	150mm	13 mm	30 mm

Catalogusnummer	Artikelnummer	Voldoet aan	Dwarsdoorsnede	Lengte (L)	Grootte van het gat (HS)	A
CPI50-200-12	554344	IEC® 60439.1, IEC® 61439,1	50mm <sup>2</sup>	200mm	13 mm	30 mm
CPI25-600-10	554308	IEC® 60439.1, IEC® 61439,1	25mm <sup>2</sup>	600mm	10.5 mm	26.5 mm
CPI35-400-12	554326	IEC® 60439.1, IEC® 61439,1	35mm <sup>2</sup>	400mm	13 mm	26.5 mm
CPI70-150-12	554365	IEC® 60439.1, IEC® 61439,1	70mm <sup>2</sup>	150mm	13 mm	30 mm
CPI50-250-12	554345	IEC® 60439.1, IEC® 61439,1	50mm <sup>2</sup>	250mm	13 mm	30 mm
CPI35-600-12	554330	IEC® 60439.1, IEC® 61439,1	35mm <sup>2</sup>	600mm	13 mm	26.5 mm
CPI50-300-12	554346	IEC® 60439.1, IEC® 61439,1	50mm <sup>2</sup>	300mm	13 mm	30 mm
CPI70-200-12	554366	IEC® 60439.1, IEC® 61439,1	70mm <sup>2</sup>	200mm	13 mm	30 mm
CPI70-250-12	554367	IEC® 60439.1, IEC® 61439,1	70mm <sup>2</sup>	250mm	13 mm	30 mm
CPI50-400-12	554348	IEC® 60439.1, IEC® 61439,1	50mm <sup>2</sup>	400mm	13 mm	30 mm
CPI50-600-12	554352	IEC® 60439.1, IEC® 61439,1	50mm <sup>2</sup>	600mm	13 mm	30 mm
CPI70-300-12	554368	IEC® 60439.1, IEC® 61439,1	70mm <sup>2</sup>	300mm	13 mm	30 mm
CPI70-1100-12	554384	IEC® 60439.1, IEC® 61439,1	70mm <sup>2</sup>	1100mm	13 mm	30 mm
CPI70-400-12	554370	IEC® 60439.1, IEC® 61439,1	70mm <sup>2</sup>	400mm	13 mm	30 mm
CPI70-600-12	554374	IEC® 60439.1, IEC® 61439,1	70mm <sup>2</sup>	600mm	13 mm	30 mm
CPI70-800-12	554378	IEC® 60439.1, IEC® 61439,1	70mm <sup>2</sup>	800mm	13 mm	30 mm

Table 2/2

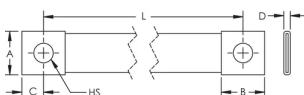
Catalogusnummer	Artikelnummer	B	C	D	Gewicht van de eenheid	Certificeringen
-----------------	---------------	---	---	---	------------------------	-----------------

CPI16-150-8	554277	20 mm	10 mm	3 mm	0.03 kg	RoHS, cUL, UL, Bureau Veritas, CE, ERIFLEX CPI, ABS
CPI16-200-8	554278	20 mm	10 mm	3 mm	0.04 kg	ABS, cUL, RoHS, CE, ERIFLEX CPI, UL, Bureau Veritas
CPI16-250-8	554279	20 mm	10 mm	3 mm	0.04 kg	UL, Bureau Veritas, cUL, ABS, CE, ERIFLEX CPI, RoHS
CPI16-300-8	554280	20 mm	10 mm	3 mm	0.05 kg	RoHS, cUL, UL, Bureau Veritas, CE, ERIFLEX CPI, ABS
CPI16-400-8	554282	20 mm	10 mm	3 mm	0.06 kg	ABS, cUL, RoHS, CE, ERIFLEX CPI, UL, Bureau Veritas
CPI25-150-10	554299	30 mm	15 mm	3.5 mm	0.06 kg	RoHS, cUL, UL, Bureau Veritas, CE, ERIFLEX CPI, ABS
CPI25-200-10	554300	30 mm	15 mm	3.5 mm	0.07 kg	ABS, cUL, RoHS, CE, ERIFLEX CPI, UL, Bureau Veritas
CPI35-150-12	554321	30 mm	15 mm	4 mm	0.07 kg	RoHS, cUL, UL, Bureau Veritas, CE, ERIFLEX CPI, ABS
CPI25-250-10	554301	30 mm	15 mm	3.5 mm	0.08 kg	UL, Bureau Veritas, cUL, ABS, CE, ERIFLEX CPI, RoHS
CPI16-600-8	554286	20 mm	10 mm	3 mm	0.09 kg	UL, Bureau Veritas, cUL, ABS, CE, ERIFLEX CPI, RoHS

CPI25-300-10	554302	30 mm	15 mm	3.5 mm	0.09 kg	RoHS, cUL, UL, Bureau Veritas, CE, ERIFLEX CPI, ABS
CPI35-200-12	554322	30 mm	15 mm	4 mm	0.09 kg	ABS, cUL, RoHS, UL, Bureau Veritas
CPI35-250-12	554323	30 mm	15 mm	4 mm	0.1 kg	UL, Bureau Veritas, cUL, ABS, RoHS
CPI25-400-10	554304	30 mm	15 mm	3.5 mm	0.11 kg	ABS, cUL, RoHS, CE, ERIFLEX CPI, UL, Bureau Veritas
CPI35-300-12	554324	30 mm	15 mm	4 mm	0.11 kg	RoHS, cUL, UL, Bureau Veritas, ABS
CPI50-150-12	554343	30 mm	15 mm	5 mm	0.11 kg	RoHS, cUL, UL, Bureau Veritas, ABS, CE, ERIFLEX CPI
CPI50-200-12	554344	30 mm	15 mm	5 mm	0.13 kg	CE, ERIFLEX CPI, cUL, RoHS, ABS, UL, Bureau Veritas
CPI25-600-10	554308	30 mm	15 mm	3.5 mm	0.15 kg	UL, Bureau Veritas, cUL, ABS, CE, ERIFLEX CPI, RoHS
CPI35-400-12	554326	30 mm	15 mm	4 mm	0.14 kg	ABS, cUL, RoHS, UL, Bureau Veritas
CPI70-150-12	554365	30 mm	15 mm	5.8 mm	0.14 kg	CE, ERIFLEX CPI, cUL, RoHS, ABS, UL, Bureau Veritas
CPI50-250-12	554345	30 mm	15 mm	5 mm	0.15 kg	UL, Bureau Veritas, cUL, CE, ERIFLEX CPI, ABS, RoHS
CPI35-600-12	554330	30 mm	15 mm	4 mm	0.2 kg	UL, Bureau Veritas, cUL, ABS, RoHS

CPI50-300-12	554346	30 mm	15 mm	5 mm	0.17 kg	RoHS, cUL, UL, Bureau Veritas, ABS, CE, ERIFLEX CPI
CPI70-200-12	554366	30 mm	15 mm	5.8 mm	0.17 kg	UL, Bureau Veritas, cUL, CE, ERIFLEX CPI, ABS, RoHS
CPI70-250-12	554367	30 mm	15 mm	5.8 mm	0.19 kg	RoHS, cUL, UL, Bureau Veritas, ABS, CE, ERIFLEX CPI
CPI50-400-12	554348	30 mm	15 mm	5 mm	0.21 kg	CE, ERIFLEX CPI, cUL, RoHS, ABS, UL, Bureau Veritas
CPI50-600-12	554352	30 mm	15 mm	5 mm	0.29 kg	UL, Bureau Veritas, cUL, CE, ERIFLEX CPI, ABS, RoHS
CPI70-300-12	554368	30 mm	15 mm	5.8 mm	0.22 kg	CE, ERIFLEX CPI, cUL, RoHS, ABS, UL, Bureau Veritas
CPI70-1100-12	554384	30 mm	15 mm	5.8 mm	0.66 kg	RoHS, cUL, UL, Bureau Veritas, ABS, CE, ERIFLEX CPI
CPI70-400-12	554370	30 mm	15 mm	5.8 mm	0.28 kg	UL, Bureau Veritas, cUL, CE, ERIFLEX CPI, ABS, RoHS
CPI70-600-12	554374	30 mm	15 mm	5.8 mm	0.39 kg	RoHS, cUL, UL, Bureau Veritas, ABS, CE, ERIFLEX CPI
CPI70-800-12	554378	30 mm	15 mm	5.8 mm	0.5 kg	CE, ERIFLEX CPI, cUL, RoHS, ABS, UL, Bureau Veritas

## DIAGRAMMEN



## WAARSCHUWING

---

nVent-producten moeten alleen worden geïnstalleerd en gebruikt zoals aangegeven in de instructiebladen en trainingsmateriaal van nVent. Instructiebladen zijn beschikbaar op [www.nvent.com](http://www.nvent.com) en bij uw nVent klantenservicevertegenwoordiger. Onjuiste installatie, misbruik, verkeerde toepassing of ander falen om de instructies en waarschuwingen van nVent volledig te volgen, kan leiden tot productstoringen, schade aan eigendommen, ernstig lichamelijk letsel en de dood en/of uw garantie ongeldig maken.

### Noord-Amerika

+1.800.753.9221  
optie 1 – Klantenservice  
optie 2 – Technische  
ondersteuning

### Europa

Nederland:  
+31 800-0200135  
Frankrijk:  
+33 800 901 793

### Europa

Duitsland:  
800 1890272  
andere landen:  
+31 13 5835404

### APAC

Shanghai:  
+ 86 21 2412 1618/19  
Sydney:  
+61 2 9751 8500



Ons krachtige merkenportfolio:

**CADDY ERICO HOFFMAN ILSCO SCHROFF TRACHTE**