

MBJ aarding en hechtmiddel, vertind koper



MBJ Grounding and Bonding Braids are a reliable and convenient grounding solution for applications that require flexibility and durability. The tinned copper ground braids with massivated palms come ready to install without any additional cutting, stripping, crimping or punching and do not require the addition of tin or crimped lugs. The proprietary manufacturing process optimizes the electrical contact between each wire and helps eliminate moisture issues in the palms, preventing corrosion and lengthening the useful life of the braid.

CERTIFICERINGEN



KENMERKEN

RoHS-conform

Complete range of earth/ground flexible connections from 6 - 100 mm² (11.84 - 197.35 kcmil) cross section and from 100 - 500 mm (3.937" - 19.685") length

Integral palm, without tin or crimped lugs for superior electrical contact and tensile strength resistance

Resistant to vibration and fatigue, reducing maintenance

Provides weight savings, material savings and lower impedance when compared to similar lugged cables with insulation

Ready to use out of the box, eliminates the need for cutting, stripping, crimping and punching

Quick and easy to install

Recommended by the EMC/EMI directives and less impedance than cables

EAC compliant

Compliant to ISO 6469-1 (Electrically propelled road vehicles - Part 1: Rechargeable energy storage system) - Section 6.2.2 Vibrations

SPECIFICATIES

Materiaal:	Koper
Voltoeien:	Ingeblikt

Certificatiegegevens: UL® 467

Bedrijfstemperatuur: 105 °C Max

Table 1/2

Catalogusnummer	Artikelnummer	Voldoet aan	Ampaciteit	Dikte (T)	Dwarsdoorsnede	Lengte (L)
MBJ6-150-6	556600	IEC® 60439.1, IEC® 61439,1	40A	1.1 mm	6mm ²	150mm
MBJ6-200-6	563410	IEC® 60439.1, IEC® 61439,1	40A	1.1 mm	6mm ²	200mm
MBJ10-200-6	556930	IEC® 60439.1, IEC® 61439,1	75A	1.1 mm	10mm ²	200mm
MBJ16-100-6	563540	IEC® 60439.1, IEC® 61439,1	120A	1.5 mm	16mm ²	100mm
MBJ16-100-8	556620	IEC® 60439.1, IEC® 61439,1	120A	1.5 mm	16mm ²	100mm
MBJ10-300-6	556610	IEC® 60439.1, IEC® 61439,1	75A	1.1 mm	10mm ²	300mm
MBJ16-200-6	563300	IEC® 60439.1, IEC® 61439,1	120A	1.5 mm	16mm ²	200mm
MBJ16-200-8	556640	IEC® 60439.1, IEC® 61439,1	120A	1.5 mm	16mm ²	200mm
MBJ25-100-10	556670	IEC® 60439.1, IEC® 61439,1	150A	1.9 mm	25mm ²	100mm
MBJ30-100-10	556720	IEC® 60439.1, IEC® 61439,1	180A	2 mm	30mm ²	100mm
MBJ16-150-6	563550	IEC® 60439.1, IEC® 61439,1	120A	1.5 mm	16mm ²	150mm
MBJ16-150-8	556630	IEC® 60439.1, IEC® 61439,1	120A	1.5 mm	16mm ²	150mm
MBJ16-250-8	556650	IEC® 60439.1, IEC® 61439,1	120A	1.5 mm	16mm ²	250mm
MBJ25-150-10	556680	IEC® 60439.1, IEC® 61439,1	150A	1.9 mm	25mm ²	150mm
MBJ35-100-10	556770	IEC® 60439.1, IEC® 61439,1	197A	2.1 mm	35mm ²	100mm
MBJ16-300-6	563320	IEC® 60439.1, IEC® 61439,1	120A	1.5 mm	16mm ²	300mm

Catalogusnummer	Artikelnummer	Voldoet aan	Ampaciteit	Dikte (T)	Dwarsdoorsnede	Lengte (L)
MBJ16-300-8	556660	IEC® 60439.1, IEC® 61439,1	120A	1.5 mm	16mm ²	300mm
MBJ25-200-10	556690	IEC® 60439.1, IEC® 61439,1	150A	1.9 mm	25mm ²	200mm
MBJ25-200-12	563430	IEC® 60439.1, IEC® 61439,1	150A	1.9 mm	25mm ²	200mm
MBJ25-200-6	563340	IEC® 60439.1, IEC® 61439,1	150A	1.9 mm	25mm ²	200mm
MBJ25-200-8	555200	IEC® 60439.1, IEC® 61439,1	150A	1.9 mm	25mm ²	200mm
MBJ30-150-10	556730	IEC® 60439.1, IEC® 61439,1	180A	2 mm	30mm ²	150mm
MBJ35-150-10	556780	IEC® 60439.1, IEC® 61439,1	197A	2.1 mm	35mm ²	150mm
MBJ50-100-10	556820	IEC® 60439.1, IEC® 61439,1	250A	2.5 mm	50mm ²	100mm
MBJ16-500-8	556940	IEC® 60439.1, IEC® 61439,1	120A	1.5 mm	16mm ²	500mm
MBJ25-250-10	556700	IEC® 60439.1, IEC® 61439,1	150A	1.9 mm	25mm ²	250mm
MBJ30-200-10	556740	IEC® 60439.1, IEC® 61439,1	180A	2 mm	30mm ²	200mm
MBJ25-300-10	556710	IEC® 60439.1, IEC® 61439,1	150A	1.9 mm	25mm ²	300mm
MBJ25-300-8	555201	IEC® 60439.1, IEC® 61439,1	150A	1.9 mm	25mm ²	300mm
MBJ25-500-10	556950	IEC® 60439.1, IEC® 61439,1	150A	1.9 mm	25mm ²	500mm
MBJ30-250-10	556750	IEC® 60439.1, IEC® 61439,1	180A	2 mm	30mm ²	250mm
MBJ35-200-10	556790	IEC® 60439.1, IEC® 61439,1	197A	2.1 mm	35mm ²	200mm
MBJ30-300-10	556760	IEC® 60439.1, IEC® 61439,1	180A	2 mm	30mm ²	300mm
MBJ30-500-10	556960	IEC® 60439.1, IEC® 61439,1	180A	2 mm	30mm ²	500mm

Catalogusnummer	Artikelnummer	Voldoet aan	Ampaciteit	Dikte (T)	Dwarsdoorsnede	Lengte (L)
MBJ35-250-10	556800	IEC® 60439.1, IEC® 61439,1	197A	2.1 mm	35mm ²	250mm
MBJ35-300-10	556810	IEC® 60439.1, IEC® 61439,1	197A	2.1 mm	35mm ²	300mm
MBJ35-500-10	556970	IEC® 60439.1, IEC® 61439,1	197A	2.1 mm	35mm ²	500mm
MBJ50-150-10	556830	IEC® 60439.1, IEC® 61439,1	250A	2.5 mm	50mm ²	150mm
MBJ35-250-25	565000	IEC® 60439.1, IEC® 61439,1	197A	3 mm	35mm ²	250mm
MBJ50-200-10	556840	IEC® 60439.1, IEC® 61439,1	250A	2.5 mm	50mm ²	200mm
MBJ50-200-12	563440	IEC® 60439.1, IEC® 61439,1	250A	2.5 mm	50mm ²	200mm
MBJ50-200-16	563360	IEC® 60439.1, IEC® 61439,1	250A	2.5 mm	50mm ²	200mm
MBJ50-200-18	563370	IEC® 60439.1, IEC® 61439,1	250A	2.5 mm	50mm ²	200mm
MBJ50-200-6	563350	IEC® 60439.1, IEC® 61439,1	250A	2.5 mm	50mm ²	200mm
MBJ50-250-10	556850	IEC® 60439.1, IEC® 61439,1	250A	2.5 mm	50mm ²	250mm
MBJ50-300-10	556860	IEC® 60439.1, IEC® 61439,1	250A	2.5 mm	50mm ²	300mm
MBJ50-300-16	563390	IEC® 60439.1, IEC® 61439,1	250A	2.5 mm	50mm ²	300mm
MBJ50-300-18	563400	IEC® 60439.1, IEC® 61439,1	250A	2.5 mm	50mm ²	300mm
MBJ50-300-6	563380	IEC® 60439.1, IEC® 61439,1	250A	2.5 mm	50mm ²	300mm
MBJ50-500-10	556980	IEC® 60439.1, IEC® 61439,1	250A	2.5 mm	50mm ²	500mm
MBJ50-500-12	563560	IEC® 60439.1, IEC® 61439,1	250A	2.5 mm	50mm ²	500mm
MBJ70-300-22	563480	IEC® 60439.1, IEC® 61439,1	290A	3 mm	70mm ²	300mm

Catalogusnummer	Artikelnummer	Voldoet aan	Ampaciteit	Dikte (T)	Dwarsdoorsnede	Lengte (L)
MBJ70-300-10	563460	IEC® 60439.1, IEC® 61439,1	290A	3.4 mm	70mm ²	300mm
MBJ70-300-12	563420	IEC® 60439.1, IEC® 61439,1	290A	3.4 mm	70mm ²	300mm
MBJ70-300-16	563470	IEC® 60439.1, IEC® 61439,1	290A	3.4 mm	70mm ²	300mm
MBJ70-300-6	563450	IEC® 60439.1, IEC® 61439,1	290A	3.4 mm	70mm ²	300mm
MBJ70-500-10	563490	IEC® 60439.1, IEC® 61439,1	290A	3.4 mm	70mm ²	500mm
MBJ100-250-16	563500	IEC® 60439.1, IEC® 61439,1	349A	4 mm	100mm ²	250mm
MBJ100-250-30	563510	IEC® 60439.1, IEC® 61439,1	349A	4 mm	100mm ²	250mm
MBJ100-500-16	563520	IEC® 60439.1, IEC® 61439,1	349A	4 mm	100mm ²	500mm
MBJ100-500-30	563530	IEC® 60439.1, IEC® 61439,1	349A	4 mm	100mm ²	500mm

Table 2/2

Catalogusnummer	Artikelnummer	Grootte van het gat (HS)	A	B	Gewicht van de eenheid	Certificeringen
MBJ6-150-6	556600	6.5 mm	11 mm	18 mm	0.01 kg	UL, CE, ERIFLEX MBJ, Bureau Veritas, RoHS, cUL, UKCA, ERIFLEX MBJ
MBJ6-200-6	563410	6.5 mm	11 mm	18 mm	0.02 kg	UKCA, ERIFLEX MBJ, RoHS, UL, CE, ERIFLEX MBJ, Bureau Veritas, cUL
MBJ10-200-6	556930	6.5 mm	11 mm	18 mm	0.02 kg	RoHS, UL, CE, ERIFLEX MBJ, Bureau Veritas, cUL, UKCA, ERIFLEX MBJ

Catalogusnummer	Artikelnummer	Grootte van het gat (HS)	A	B	Gewicht van de eenheid	Certificeringen
MBJ16-100-6	563540	6.5 mm	15 mm	20 mm	0.02 kg	RoHS, UL, CE, ERIFLEX MBJ, Bureau Veritas, cUL, UKCA, ERIFLEX MBJ
MBJ16-100-8	556620	8.5 mm	15 mm	20 mm	0.02 kg	UKCA, ERIFLEX MBJ, UL, CE, ERIFLEX MBJ, Bureau Veritas, RoHS, cUL
MBJ10-300-6	556610	6.5 mm	11 mm	18 mm	0.03 kg	UKCA, ERIFLEX MBJ, UL, CE, ERIFLEX MBJ, Bureau Veritas, RoHS, cUL
MBJ16-200-6	563300	6.5 mm	15 mm	20 mm	0.03 kg	UKCA, ERIFLEX MBJ, UL, CE, ERIFLEX MBJ, Bureau Veritas, RoHS, cUL
MBJ16-200-8	556640	8.5 mm	15 mm	20 mm	0.03 kg	cUL, UL, CE, ERIFLEX MBJ, Bureau Veritas, UKCA, ERIFLEX MBJ, RoHS
MBJ25-100-10	556670	10.5 mm	20 mm	28 mm	0.03 kg	UKCA, ERIFLEX MBJ, UL, CE, ERIFLEX MBJ, Bureau Veritas, RoHS, cUL
MBJ30-100-10	556720	10.5 mm	22 mm	28 mm	0.03 kg	UL, CE, ERIFLEX MBJ, Bureau Veritas, RoHS, cUL, UKCA, ERIFLEX MBJ
MBJ16-150-6	563550	6.5 mm	15 mm	20 mm	0.04 kg	cUL, UL, CE, ERIFLEX MBJ, Bureau Veritas, UKCA, ERIFLEX MBJ, RoHS
MBJ16-150-8	556630	8.5 mm	15 mm	20 mm	0.04 kg	RoHS, UL, CE, ERIFLEX MBJ, Bureau Veritas, cUL, UKCA, ERIFLEX MBJ

Catalogusnummer	Artikelnummer	Grootte van het gat (HS)	A	B	Gewicht van de eenheid	Certificeringen
MBJ16-250-8	556650	8.5 mm	15 mm	20 mm	0.04 kg	RoHS, UL, CE, ERIFLEX MBJ, Bureau Veritas, cUL, UKCA, ERIFLEX MBJ
MBJ25-150-10	556680	10.5 mm	20 mm	28 mm	0.04 kg	cUL, UL, CE, ERIFLEX MBJ, Bureau Veritas, UKCA, ERIFLEX MBJ, RoHS
MBJ35-100-10	556770	10.5 mm	22 mm	28 mm	0.04 kg	UL, CE, ERIFLEX MBJ, Bureau Veritas, RoHS, cUL, UKCA, ERIFLEX MBJ
MBJ16-300-6	563320	6.5 mm	15 mm	20 mm	0.05 kg	UKCA, ERIFLEX MBJ, UL, CE, ERIFLEX MBJ, Bureau Veritas, RoHS, cUL
MBJ16-300-8	556660	8.5 mm	15 mm	20 mm	0.05 kg	cUL, UL, CE, ERIFLEX MBJ, Bureau Veritas, UKCA, ERIFLEX MBJ, RoHS
MBJ25-200-10	556690	10.5 mm	20 mm	28 mm	0.05 kg	RoHS, UL, CE, ERIFLEX MBJ, Bureau Veritas, cUL, UKCA, ERIFLEX MBJ
MBJ25-200-12	563430	12.5 mm	20 mm	28 mm	0.05 kg	UKCA, ERIFLEX MBJ, UL, CE, ERIFLEX MBJ, Bureau Veritas, RoHS, cUL
MBJ25-200-6	563340	6.5 mm	20 mm	28 mm	0.05 kg	cUL, UL, CE, ERIFLEX MBJ, Bureau Veritas, UKCA, ERIFLEX MBJ, RoHS
MBJ25-200-8	555200	8.5 mm	20 mm	28 mm	0.05 kg	UL, CE, ERIFLEX MBJ, Bureau Veritas, cUL

Catalogusnummer	Artikelnummer	Grootte van het gat (HS)	A	B	Gewicht van de eenheid	Certificeringen
MBJ30-150-10	556730	10.5 mm	22 mm	28 mm	0.05 kg	UKCA, ERIFLEX MBJ, RoHS, UL, CE, ERIFLEX MBJ, Bureau Veritas, cUL
MBJ35-150-10	556780	10.5 mm	22 mm	28 mm	0.05 kg	UKCA, ERIFLEX MBJ, RoHS, UL, CE, ERIFLEX MBJ, Bureau Veritas, cUL
MBJ50-100-10	556820	10.5 mm	28 mm	33 mm	0.05 kg	UKCA, ERIFLEX MBJ, RoHS, UL, CE, ERIFLEX MBJ, Bureau Veritas, cUL
MBJ16-500-8	556940	8.5 mm	15 mm	20 mm	0.08 kg	RoHS, UL, CE, ERIFLEX MBJ, Bureau Veritas, cUL, UKCA, ERIFLEX MBJ
MBJ25-250-10	556700	10.5 mm	20 mm	28 mm	0.06 kg	cUL, UL, CE, ERIFLEX MBJ, Bureau Veritas, RoHS, UKCA, ERIFLEX MBJ
MBJ30-200-10	556740	10.5 mm	22 mm	28 mm	0.06 kg	cUL, RoHS, UKCA, ERIFLEX MBJ, UL, CE, ERIFLEX MBJ, Bureau Veritas
MBJ25-300-10	556710	10.5 mm	20 mm	28 mm	0.08 kg	UKCA, ERIFLEX MBJ, UL, CE, ERIFLEX MBJ, Bureau Veritas, cUL, RoHS
MBJ25-300-8	555201	8.5 mm	20 mm	28 mm	0.08 kg	UL, CE, ERIFLEX MBJ, Bureau Veritas, cUL
MBJ25-500-10	556950	10.5 mm	20 mm	28 mm	0.13 kg	cUL, RoHS, UKCA, ERIFLEX MBJ, UL, CE, ERIFLEX MBJ, Bureau Veritas

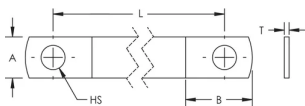
Catalogusnummer	Artikelnummer	Grootte van het gat (HS)	A	B	Gewicht van de eenheid	Certificeringen
MBJ30-250-10	556750	10.5 mm	22 mm	28 mm	0.07 kg	UL, CE, ERIFLEX MBJ, Bureau Veritas, RoHS, cUL, UKCA, ERIFLEX MBJ
MBJ35-200-10	556790	10.5 mm	22 mm	28 mm	0.07 kg	cUL, RoHS, UKCA, ERIFLEX MBJ, UL, CE, ERIFLEX MBJ, Bureau Veritas
MBJ30-300-10	556760	10.5 mm	22 mm	28 mm	0.09 kg	UKCA, ERIFLEX MBJ, RoHS, UL, CE, ERIFLEX MBJ, Bureau Veritas, cUL
MBJ30-500-10	556960	10.5 mm	22 mm	28 mm	0.15 kg	cUL, RoHS, UKCA, ERIFLEX MBJ, UL, CE, ERIFLEX MBJ, Bureau Veritas
MBJ35-250-10	556800	10.5 mm	22 mm	28 mm	0.09 kg	UL, CE, ERIFLEX MBJ, Bureau Veritas, RoHS, cUL, UKCA, ERIFLEX MBJ
MBJ35-300-10	556810	10.5 mm	22 mm	28 mm	0.11 kg	cUL, RoHS, UKCA, ERIFLEX MBJ, UL, CE, ERIFLEX MBJ, Bureau Veritas
MBJ35-500-10	556970	10.5 mm	22 mm	28 mm	0.18 kg	UL, CE, ERIFLEX MBJ, Bureau Veritas, RoHS, cUL, UKCA, ERIFLEX MBJ
MBJ50-150-10	556830	10.5 mm	28 mm	33 mm	0.08 kg	cUL, RoHS, UKCA, ERIFLEX MBJ, UL, CE, ERIFLEX MBJ, Bureau Veritas
MBJ35-250-25	565000	25.5 mm	40 mm	45 mm	0.09 kg	UKCA, ERIFLEX MBJ, RoHS, UL, CE, ERIFLEX MBJ, Bureau Veritas, cUL

Catalogusnummer	Artikelnummer	Grootte van het gat (HS)	A	B	Gewicht van de eenheid	Certificeringen
MBJ50-200-10	556840	10.5 mm	28 mm	33 mm	0.12 kg	UL, CE, ERIFLEX MBJ, Bureau Veritas, RoHS, cUL, UKCA, ERIFLEX MBJ
MBJ50-200-12	563440	12.5 mm	28 mm	33 mm	0.12 kg	UKCA, ERIFLEX MBJ, RoHS, UL, CE, ERIFLEX MBJ, Bureau Veritas, cUL
MBJ50-200-16	563360	16.5 mm	28 mm	33 mm	0.11 kg	cUL, RoHS, UKCA, ERIFLEX MBJ, UL, CE, ERIFLEX MBJ, Bureau Veritas
MBJ50-200-18	563370	18.5 mm	28 mm	33 mm	0.11 kg	UL, CE, ERIFLEX MBJ, Bureau Veritas, RoHS, cUL, UKCA, ERIFLEX MBJ
MBJ50-200-6	563350	6.5 mm	28 mm	33 mm	0.12 kg	UKCA, ERIFLEX MBJ, RoHS, UL, CE, ERIFLEX MBJ, Bureau Veritas, cUL
MBJ50-250-10	556850	10.5 mm	28 mm	33 mm	0.13 kg	cUL, RoHS, UKCA, ERIFLEX MBJ, UL, CE, ERIFLEX MBJ, Bureau Veritas
MBJ50-300-10	556860	10.5 mm	28 mm	33 mm	0.15 kg	UL, CE, ERIFLEX MBJ, Bureau Veritas, RoHS, cUL, UKCA, ERIFLEX MBJ
MBJ50-300-16	563390	16.5 mm	28 mm	33 mm	0.15 kg	UKCA, ERIFLEX MBJ, RoHS, UL, CE, ERIFLEX MBJ, Bureau Veritas, cUL
MBJ50-300-18	563400	18.5 mm	28 mm	33 mm	0.14 kg	cUL, RoHS, UKCA, ERIFLEX MBJ, UL, CE, ERIFLEX MBJ, Bureau Veritas

Catalogusnummer	Artikelnummer	Grootte van het gat (HS)	A	B	Gewicht van de eenheid	Certificeringen
MBJ50-300-6	563380	6.5 mm	28 mm	33 mm	0.15 kg	UL, CE, ERIFLEX MBJ, Bureau Veritas, RoHS, cUL, UKCA, ERIFLEX MBJ
MBJ50-500-10	556980	10.5 mm	28 mm	33 mm	0.26 kg	UKCA, ERIFLEX MBJ, RoHS, UL, CE, ERIFLEX MBJ, Bureau Veritas, cUL
MBJ50-500-12	563560	12.5 mm	28 mm	33 mm	0.26 kg	cUL, RoHS, UKCA, ERIFLEX MBJ, UL, CE, ERIFLEX MBJ, Bureau Veritas
MBJ70-300-22	563480	22.5 mm	40 mm	45 mm	0.2 kg	cUL, RoHS, UKCA, ERIFLEX MBJ, UL, CE, ERIFLEX MBJ, Bureau Veritas
MBJ70-300-10	563460	10.5 mm	28 mm	33 mm	0.21 kg	cUL, RoHS, UKCA, ERIFLEX MBJ, UL, CE, ERIFLEX MBJ, Bureau Veritas
MBJ70-300-12	563420	12.5 mm	28 mm	33 mm	0.21 kg	UL, CE, ERIFLEX MBJ, Bureau Veritas, RoHS, cUL, UKCA, ERIFLEX MBJ
MBJ70-300-16	563470	16.5 mm	28 mm	33 mm	0.2 kg	UKCA, ERIFLEX MBJ, RoHS, UL, CE, ERIFLEX MBJ, Bureau Veritas, cUL
MBJ70-300-6	563450	6.5 mm	28 mm	33 mm	0.21 kg	UL, CE, ERIFLEX MBJ, Bureau Veritas, RoHS, cUL, UKCA, ERIFLEX MBJ
MBJ70-500-10	563490	10.5 mm	28 mm	33 mm	0.34 kg	UKCA, ERIFLEX MBJ, RoHS, UL, CE, ERIFLEX MBJ, Bureau Veritas, cUL

Catalogusnummer	Artikelnummer	Grootte van het gat (HS)	A	B	Gewicht van de eenheid	Certificeringen
MBJ100-250-16	563500	16.5 mm	40 mm	55 mm	0.25 kg	cUL, UL, CE, ERIFLEX MBJ, Bureau Veritas, UKCA, ERIFLEX MBJ, RoHS
MBJ100-250-30	563510	30.5 mm	40 mm	55 mm	0.25 kg	RoHS, UL, CE, ERIFLEX MBJ, Bureau Veritas, cUL, UKCA, ERIFLEX MBJ
MBJ100-500-16	563520	16.5 mm	40 mm	42.5 mm	0.51 kg	UKCA, ERIFLEX MBJ, UL, CE, ERIFLEX MBJ, Bureau Veritas, RoHS, cUL
MBJ100-500-30	563530	30.5 mm	40 mm	55 mm	0.51 kg	cUL, UL, CE, ERIFLEX MBJ, Bureau Veritas, UKCA, ERIFLEX MBJ, RoHS

DIAGRAMMEN



WAARSCHUWING

nVent-producten moeten alleen worden geïnstalleerd en gebruikt zoals aangegeven in de instructiebladen en trainingsmateriaal van nVent. Instructiebladen zijn beschikbaar op www.nvent.com en bij uw nVent klantenservicevertegenwoordiger. Onjuiste installatie, misbruik, verkeerde toepassing of ander falen om de instructies en waarschuwingen van nVent volledig te volgen, kan leiden tot productstoringen, schade aan eigendommen, ernstig lichamelijk letsel en de dood en/of uw garantie ongeldig maken.

Noord-Amerika

+1.800.753.9221

optie 1 – Klantenservice

optie 2 – Technische

ondersteuning

Europa

Nederland:

+31 800-0200135

Frankrijk:

+33 800 901 793

Europa

Duitsland:

800 1890272

andere landen:

+31 13 5835404

APAC

Shanghai:

+ 86 21 2412 1618/19

Sydney:

+61 2 9751 8500



Ons krachtige merkenportfolio:

CADDY

ERICO

HOFFMAN

ILSCO

SCHROFF

TRACHTE