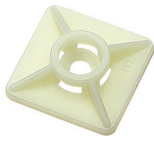
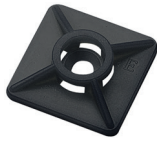


Bi-directional mounts for screw fixing



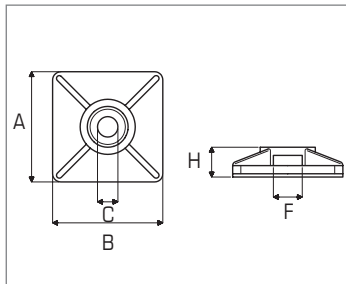
ABS Natural



ABS Black



PA 6.6 DT



Technical Data

| CODE | | | NOMINAL DIMENSIONS | | | | | For cable tie width (mm) |
|---------|---------|-----------|--------------------|--------|--------|--------|--------|--------------------------|
| Natural | Black | Blue | (mm) A | (mm) B | (mm) C | (mm) F | (mm) H | |
| - | 5468 | - | 19 | 19 | 4,2 | 4 | 5 | 3,6 |
| 5472 | 5474 | - | 27 | 27 | 5 | 6 | 6,5 | 4,8 |
| 5467RB | 5469RB | - | 19 | 19 | 4,2 | 4 | 5 | 3,6 |
| 5473RB | 5475RB | - | 27 | 27 | 5 | 6 | 6,5 | 4,8 |
| 54673MV | 54693MV | - | 19 | 19 | 4,2 | 4 | 5 | 3,6 |
| 54733MV | 54753MV | 5473DTRB* | 27 | 27 | 5 | 6 | 6,5 | 4,8 |

COLORS

- ABS Natural
- ABS Black
- PA 6.6 DT

MATERIALS

ABS: natural or additivated with carbon black for the black color

Halogen free

Material flammability rating:

UL 94-HB

Good resistance to: bases and greases

Limited resistance to: acids

Not resistant to: solvents, thinners, petroleum products

PA 6.6 DT: Polyamide 6.6 natural additivated with iron oxide for identification by metal detector or X-ray inspection equipment

Halogen free

Material flammability rating:

UL 94-HB

Excellent resistance to: aromatic solvents, oils, greases and derivatives

Good resistance to: bases

Limited resistance to: acids

Not resistant to: phenols and to chlorinated solvents

PRODUCTS CONFORMITY:

CE marking: our products comply with the Low Voltage Directive 2014/35/EU and the cable ties are tested in accordance with CEI EN IEC 62275 "Cable management system – Cable ties for electrical installations".

REACH: the materials used to produce the cable ties comply with 1907/2006/CE (REACH)

Mechanical features and packaging

| CODE | | Material | Adhesive | MECHANICAL FEATURES | | | PACKAGING | |
|---------|---------|----------|--------------|-------------------------------|--------------------------|----------------------|-----------|-----------|
| Natural | Black | | | Installation temperature (°C) | Working temperature (°C) | Tensile strength (N) | (pcs) Bag | (pcs) Box |
| - | 5468 | ABS | no | -10\+60 | -40\+75 | 130 | 100 | 10.000 |
| 5472 | 5474 | ABS | no | -10\+60 | -40\+75 | 200 | 100 | 5.000 |
| 5467RB | 5469RB | ABS | rubber base | +15\+40 | -40\+60 | 120 | 100 | 15.000 |
| 5473RB | 5475RB | ABS | rubber base | +15\+40 | -40\+60 | 180 | 100 | 6.000 |
| 54673MV | 54693MV | ABS | acrylic base | +20\+40 | -40\+75 | 130 | 100 | 15.000 |
| 54733MV | 54753MV | ABS | acrylic base | +20\+40 | -40\+75 | 180 | 100 | 6.000 |

| CODE | | Material | Adhesive | MECHANICAL FEATURES | | | PACKAGING | |
|------------|--|-----------|-------------|-------------------------------|--------------------------|----------------------|-----------|-----------|
| Blue | | | | Installation temperature (°C) | Working temperature (°C) | Tensile strength (N) | (pcs) Bag | (pcs) Box |
| 5473DTRB * | | PA 6.6 DT | rubber base | +15\+40 | -40\+60 | 180 | 100 | 6.000 |

*Not usable in applications relating to the Low Voltage Directive 2014/35/EU.

| ADHESIVE DATA | | | | |
|---------------|--------------|-----------------|---------------------------|---------------------------|
| Adhesive | Bonding foam | Density (Kg/m³) | U.V. Resistance | Usage |
| Rubber base | Polyethylene | 100 | limited (not recommended) | For immediate application |
| Acrylic base | Polyurethane | 320 | good | Leave to rest for 24hs |