

**SPECIFICATIONS**

1. THE HEIGHT AND WIDTH TOLERANCE IS +0/-1/8"; SQUARE WITHIN 1/8"
2. THE DEPTH TOLERANCE IS +1/16" / -0
3. THE FILTER RESISTANCE IS 1.65"(W PACK)/1.45"(H PACK) W.G. MAXIMUM AT THE RATED FLOW
4. THE MAXIMUM TEMPERATURE EXPOSURE IS 250°F (URETHANE GEL 150°F)
5. THE MAXIMUM R.H. IS 100%
6. CLASSIFIED BY UNDERWRITERS LABORTORIES TO FLAMMABILITY ONLY UL 900.
7. IF SCAN TESTED, THE FILTER SHALL BE TESTED AT 90 FPM ±10% WITH AN APPROVED AEROSOL FOR LEAKS.

SIZE DESIGNATORS & RATED FLOW @ 1.45" (H MEDIUM) OR 1.65" (W MEDIUM) W.G.

| SIZE CODE | HEIGHT  | WIDTH   | DEPTH   | RATED FLOW (CFM) |
|-----------|---------|---------|---------|------------------|
| CC-F      | 12"     | 12"     | 11 1/2" | 430              |
| YU-F      | 23 3/8" | 11 3/8" | 11 1/2" | 865              |
| GC-F      | 24"     | 12"     | 11 1/2" | 920              |
| GE-F      | 24"     | 18"     | 11 1/2" | 1380             |
| YY-F      | 23 3/8" | 23 3/8" | 11 1/2" | 1900             |
| GG-F      | 24"     | 24"     | 11 1/2" | 2000             |
| GN-F      | 24"     | 30"     | 11 1/2" | 2500             |

FILTER HARDWARE -  0: NONE  
 T: FILTER EXTRACTION CLIPS

FILTER MEDIUM -  007: 99.97% AT 0.3 µm WATER RESISTANT GLASS  
 011: 99.97% AT 0.3 µm WATER RESISTANT GLASS

PACK STYLE -  W: 11" PUREFORM (FOR 007 MEDIA)  
 H: ALUMINUM SEPARATORS (FOR 011 MEDIA)

FRAME MATERIAL -  02: 16 GA T-409 SS  
 03: 16 GA T-304 SS  
 05: 0.063" ALUMINUM  
 08: 16 GA GALVANEAL

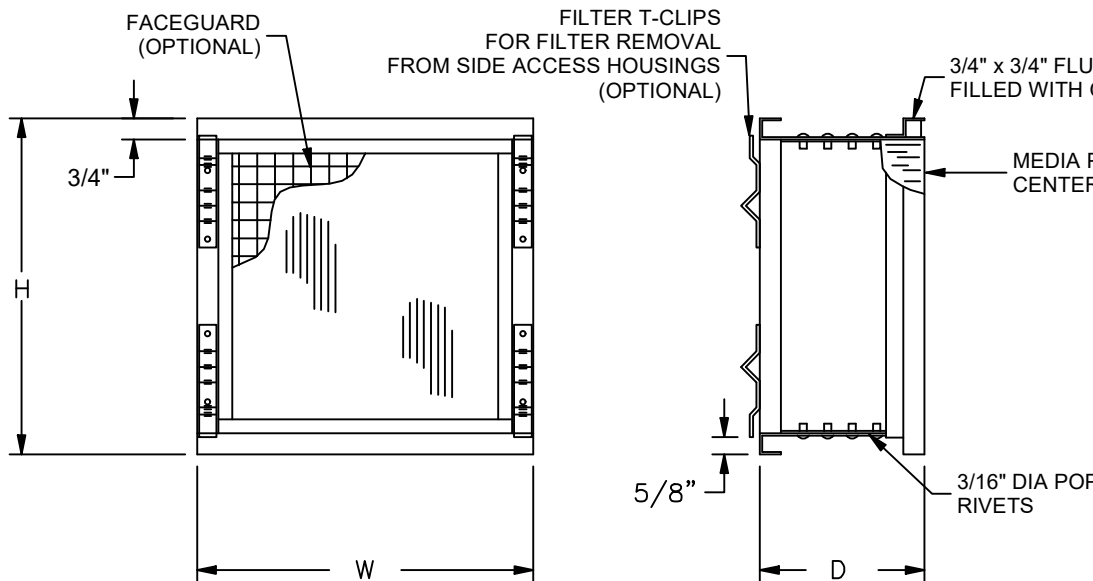
FRAME STYLE -  05: FLUID SEAL CHANNEL

PACK SEALANT TEST METHOD -  IU: SOLID URETHANE / DOP TEST (99.97%)  
 SU: SOLID URETHANE / SCAN TEST (99.99%)

GASKET MATERIAL LOCATION -  00: NONE  
 51: SILICONE GEL UPSTREAM  
 52: SILICONE GEL DOWNSTREAM  
 61: URETHANE GEL UPSTREAM  
 62: URETHANE GEL DOWNSTREAM.

FACEGUARD MATERIAL LOCATION -  00: NONE  
 11: GALVANIZED UPSTREAM  
 12: GALVANIZED DOWNSTREAM  
 13: GALVANIZED BOTH SIDES  
 21: STAINLESS STL. UPSTREAM  
 22: STAINLESS STL. DOWNSTREAM  
 23: STAINLESS STL. BOTH SIDES

SIZE CODE - GG-F EXAMPLE  
 SEE CHART



|  |                      |                       |  |                    |              |
|--|----------------------|-----------------------|--|--------------------|--------------|
| CUSTOMER APPROVAL<br>DRAWINGS MUST BE SIGNED IN ORDER TO PROCEED WITH PRODUCTION.<br><input type="checkbox"/> APPROVED <input type="checkbox"/> APPROVED AS NOTED <input type="checkbox"/> NOT APPROVED - RESUBMIT |                      |                       |  |                    |              |
| SIGNATURE: _____   |                      |                       | DATE: _____                                |                    |              |
| COMMENTS: _____  |                      |                       |  |                    |              |
| QUOTE NO.: _____   |                      |                       |  |                    |              |
| UNLESS OTHERWISE SPECIFIED DIMENSIONS ARE IN INCHES TOLERANCES ARE:  |                      |                       |  |                    |              |
| FRACTIONS X/X ±1/8<br>DECIMALS X.XX ±0.13<br>DIAGONALS ±1/8  |                      |                       | TITLE: ALPHA 2000, METAL FRAME, FLUID SEAL |                    |              |
| DRAWN BY<br>j.holland  | CHECKED BY<br>S.TATE | APPROVED BY<br>M.RENN | SHEET<br>1 OF 1                            | SHEET<br>SIZE<br>A | SCALE<br>NTS |
| DATE<br>8/12/2021  |                      |                       | DATE<br>9/21/2021                          |                    |              |
| DRAWING NUMBER   |                      |                       |  |                    |              |
| 600-00028-0006   |                      |                       |  |                    | REV<br>A     |

THE INFORMATION CONTAINED ON THIS DRAWING IS PROPRIETARY TO AAF FLANDERS AND MAY NOT BE USED, REPRODUCED NOR TRANSMITTED TO OTHER PARTIES WITHOUT EXPRESSED WRITTEN CONSENT OF AAF FLANDERS.