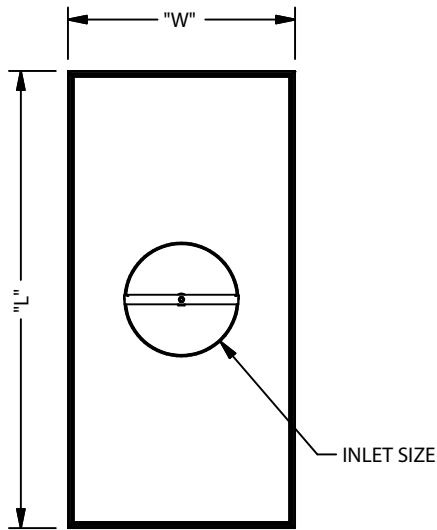


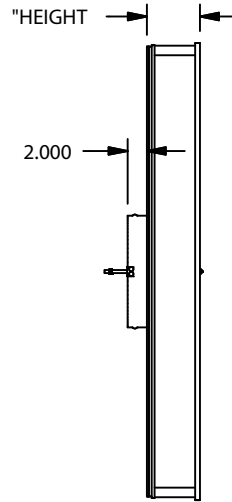
HOOD SIZING		
W x L	DIMENSIONAL SIZE	METRIC DIMENSIONAL SIZE
2 x 2	23-5/8" x 23-5/8"	600.08 mm x 600.08 mm
2 x 3	23-5/8" x 35-5/8"	600.08 mm x 904.88 mm
2 x 4	23-5/8" x 47-5/8"	600.08 mm x 1209.68 mm

ITEM	HOOD SIZE	QTY
1		
2		
3		
4		
5		
6		
EX.	2 x 2	2

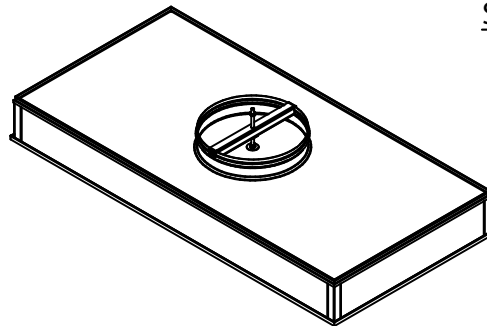
REV	ECN #	DESCRIPTION	BY	DATE
-----	-------	-------------	----	------



TOP VIEW



SIDE VIEW



ISOMETRIC VIEW

2" PACK HEIGHT
W/ TELESCOPING
DISC SHOWN

APPLICABLE INLET SIZES	
HOOD SIZE	DUCT SIZE
2 x 2	8" [203.2mm]/10" [254mm]
2 x 3	10" [254mm]/12" [304.8mm]
2 x 4	10" [254mm]/12" [304.8mm]/14" [355.6]

GRID TYPE

- GASKET TEE GRID
- FLUID TEE GRID

PACK HEIGHT

- 2" PACK HEIGHT
(5-17/32" OVERALL HEIGHT)
- 4" PACK HEIGHT
(8-29/32" OVERALL HEIGHT)

FILTER EFFICIENCY

- 99.99% / H13
- 99.999% / H14
- 99.9995% / U15
- 99.99999% / U16

DAMPER TYPE

- BUTTERFLY
- TELESCOPING DISC
- NONE

INLET SIZE

- Ø 8" [203.2mm] ROUND
- Ø 10" [254mm] ROUND
- Ø 12" [304.8mm] ROUND
- Ø 14" [355.6mm] ROUND

GRILLE TYPE

- PAINTED EXPANDED CRS - WHITE
- PERF STAINLESS STEEL (316L)
- PERF ALUMINUM (ANODIZED)

INSULATION

- NONE
- 2" [50.8mm] FOILBACK - TOP & SIDES
- 2" [50.8mm] FOILBACK - TOP ONLY

**AstroHood to be constructed from anodized aluminum extrusion.

CUSTOMER APPROVAL					
DRAWINGS MUST BE SIGNED IN ORDER TO PROCEED WITH PRODUCTION. [] APPROVED [] APPROVED AS NOTED [] NOT APPROVED					
SIGNATURE: _____		DATE: _____			
COMMENTS: _____					
QUOTE NO.: _____					
UNLESS OTHERWISE SPECIFIED DIMENSIONS ARE IN INCHES TOLERANCES ARE:		AAF INTERNATIONAL <small>a member of DAIKIN group</small>			
FRACTIONS X/X ±1/8 DECIMALS X.XX ±0.13 DIAGONALS ±1/8		TITLE: AstroHood S3			
DRAWN BY rwalston	CHECKED BY	APPROVED BY	SHEET 1 OF 1	SHEET SIZE A	SCALE 1 / 20
DATE 10/16/2019		DATE	DATE	DRAWING NUMBER 600-00014	
THE INFORMATION CONTAINED ON THIS DRAWING IS PROPRIETARY TO AAF AND MAY NOT BE USED, REPRODUCED NOR TRANSMITTED TO OTHER PARTIES WITHOUT EXPRESSED WRITTEN CONSENT OF AAF.					REV