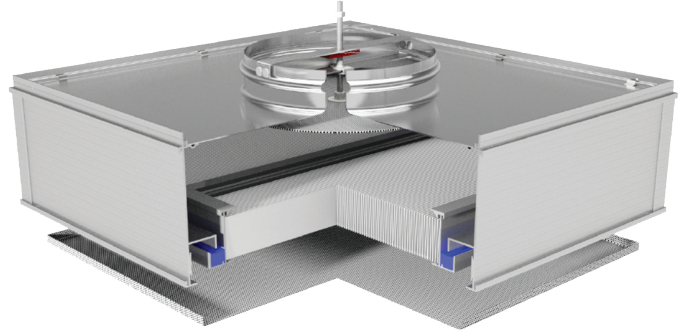


AstroHood® S-III RSR

DUCTED HEPA/ULPA TERMINAL MODULES

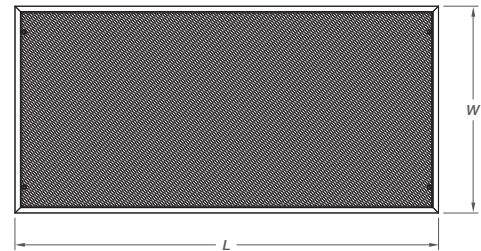
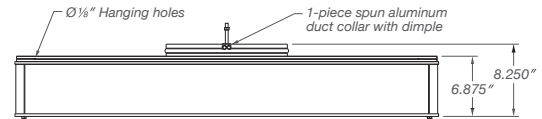
Benefits

- Gel and knife-edge seal for positive leak tightness
- HEPA/ULPA filter replaceable from the roomside
- 2" filter pack is lightweight and offers low-profile design
- In-room airflow damper adjustment with proprietary damper adjustment alignment system
- One-piece top construction



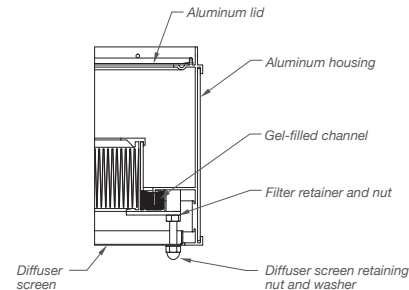
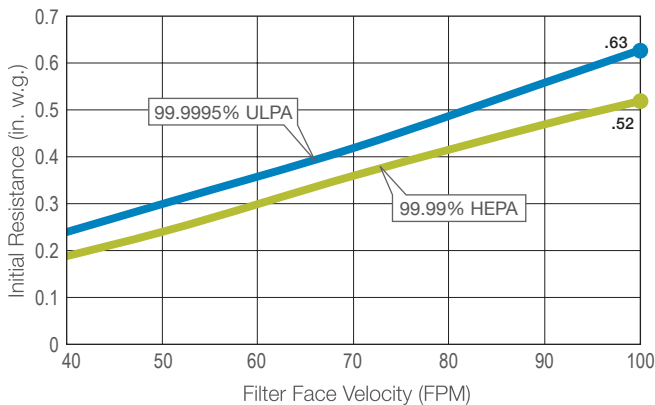
Construction and Features

The state-of-the-art filter pack is sealed in an anodized extruded aluminum frame. The sides of the filter pack contain an integral extruded channel that holds cleanroom quality sealing gel. The filter's extruded aluminum center divider is furnished with a port for in-room baffle plate adjustment and measuring of challenge aerosol. AAF does not recommend using the aerosol port as a means of aerosol injection. The one-piece hood/inlet collar is made of spun aluminum, and the inlet collar is ribbed to secure the flex duct retaining strap. A 22-gauge, 40% open area removable perforated grille protects the media pack. Hanging holes (1/8" in diameter) are drilled on the module's top four corners to secure seismic restraint wires or to hang the unit.



HEPA and ULPA Filter Media Initial Resistance vs. Filter Face Velocity

2" Filters



AstroHood® S-III RSR

Model Number System

AS3R – B F 22 10 – S 0 0

(1) (2) (3) (4) (5) (6) (7) (8)

(1) PRODUCT TYPE	(2) DAMPER TYPE	(3) SEAL TYPE	(4) HOOD SIZE	(5) INLET TYPE	(6) GRILLE TYPE	(7) INSULATION	(8) FINISH
------------------------	-----------------------	---------------------	---------------------	----------------------	-----------------------	-------------------	---------------

(1) Product Type: AS3R - AstroHood S-III Extruded Aluminum	Example: AS3R-BF2210-S00		(6) Grille Type: S - 40% Perf Stainless Steel (316L) P - 40% Perf Painted CRS
(2) Damper Type: B - Butterfly T - Telescoping Perforated Disk N - None	(7) Insulation: 0 - None 1 - 2" Foil Back Glass (Top & Sides) 2 - 2" Foil Back Glass (Top Only)		
(3) Seal Type: F - Fluid	(8) Finish: 0 - No Finish 1 - Powder Paint Coated (white)		
(4) Hood Size 22 - 2 x 2 (23-5/8" x 23-5/8") 23 - 2 x 3 (23-5/8" x 35-5/8") 24 - 2 x 4 (23-5/8" x 47-5/8")			
(5) Inlet Size: 08 - 8" Round 10 - 10" Round 12 - 12" Round 14 - 14" Round	Applicable Duct Sizes		
	Hood Size	Duct Size	
	22 - 2 x 2	08", 10"	
	23 - 2 x 3	10", 12"	
	24 - 2 x 4	10", 12", 14"	

AstroHood® S-III RSR Specifications

1.0 Construction

1.1 Housing shall:

- 1.1.1 Be constructed of 0.060" thick extruded anodized aluminum for gasket seal "tee-grid".
- 1.1.2 Have round 8-, 10-, 12- or 14-inch duct connection fully formed into the hood top. Intermittently welded and caulked-in-place inlet collars are not acceptable.
- 1.1.3 Have butterfly damper to control airflow through the housing. A telescoping perforated disk is optional.

1.2 HEPA or ULPA filter shall:

- 1.2.1 Be constructed in accordance with the recommended construction requirements of IEST-RP-CC001.
- 1.2.2 Be constructed of a pleated single and continuous layer of fire-resistant borosilicate microfiberglass with equally spaced pleats by means of media separators. Nominal media pack depth shall be 2".
- 1.2.3 Have the media pack permanently affixed to frame assembly by means of a solid, continuous, fire-retardant, phosphorous-free polyurethane sealant, forming a leak-free bond between the filter pack and filter frame.
- 1.2.4 Have a frame with perpendicularity specification of no more than 1% to ensure tight miter corners and a leak-free design. Corners must contain no cracks or uneven areas.
- 1.2.5 Include as standard an integral expanded CRS grille painted white that is potted in place with the filter media pack.

2.0 Performance and Testing

- 2.1 Each AstroHood® S-III RSR Terminal Ducted Air Filter Module shall be individually factory tested at the knife edge using soap bubble test for leak-free design.
- 2.2 Each AstroHood® S-III RSR Terminal Ducted Air Filter Module shall have a serial number allowing for full traceability. Each unit shall be individually serialized and traceable to the specified leak test procedure.
- 2.3 Each HEPA filter is supplied and tested under the guidance of IEST-RP-CC001.
- 2.4 Each Filter shall be tested for initial (clean) pressure drop at rated flow.
- 2.5 Each Filter shall be factory scanned in accordance with IEST-RP-CC034.
- 2.6 Filter shall be listed by Underwriters Laboratories as UL 900 standard and UL 586 as required.

3.0 Labeling and Reporting

- 3.1 Each filter shall have a unique labeling indicating filter size, lot number, unique serial number, model number, tested efficiency, pressure drop at volumetric test airflow, and UL compliance.
- 3.2 A test certificate shall be provided for each filter indicating filter-specific test data, including the lot and serial number, along with the pressure drop and efficiency.
- 3.3 Each AstroHood® S-III shall contain a label affixed to the unit with a stamped area ensuring pressure testing pass/fail criteria. Test reports should be provided upon request.



9920 Corporate Campus Drive, Suite 2200, Louisville, KY 40223-5690
888.223.2003 Fax 888.223.6500 | aafintl.com

AAF has a policy of continuous product research and improvement. We reserve the right to change design and specifications without notice.

©2023 AAF International and its affiliated companies.

ISO Certified Firm

AFP-CS-108A 12/23