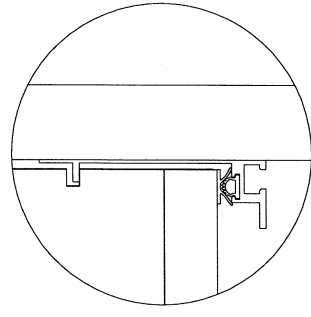
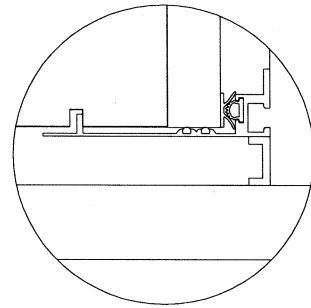


LTR.	CHANGE	CK'D	DATE	APPR	DATE
A	DRAWING TITLE RVS'D.	K.O.	BAUG06	K.O.	BAUG06
B	TABULATION CHARTS RVS'D.	K.O.	6SEPT06	K.O.	6SEPT06
C	TABULATION CHARTS RVS'D., CHANNEL BASE INFO. ADDED	K.O.	29NOV06	CAO	29NOV06
D	TABULATION CHARTS RVS'D.	K.O.	15FEB07		23FEB07

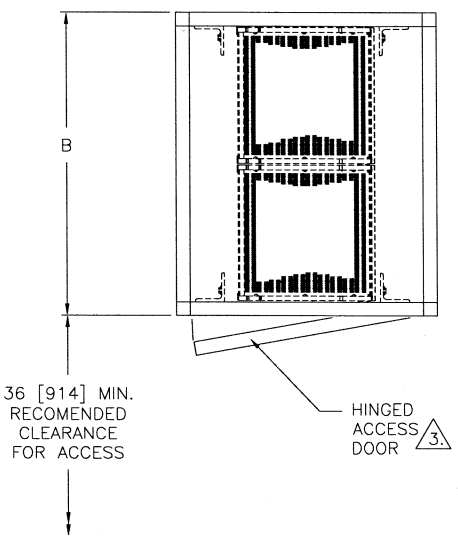


DETAIL A

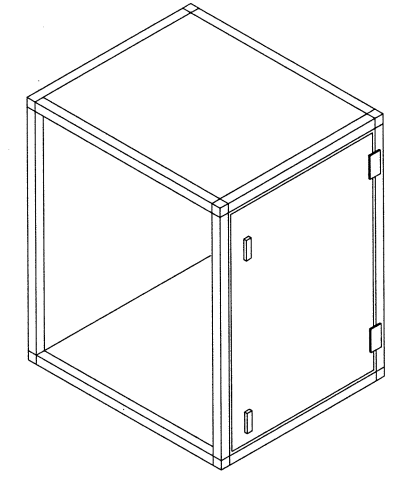
DETAILS A AND B SHOW AAF'S PATENT PENDING SAAFSEAL HIGH INTEGRITY SEALING SYSTEM.



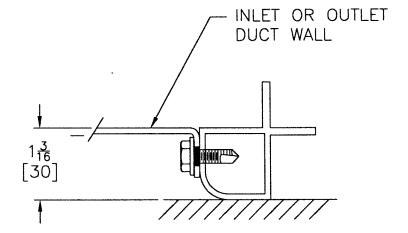
DETAIL B



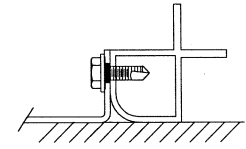
PLAN VIEW



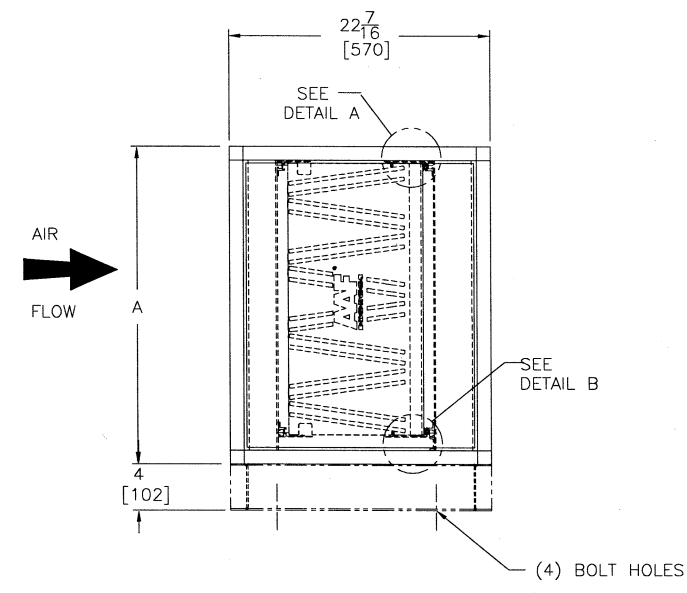
ISOMETRIC VIEW
INTERNALS NOT SHOWN



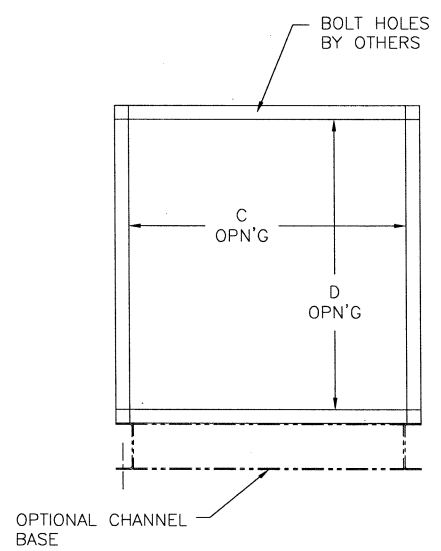
DETAIL C
DUCT CONNECTION



DETAIL C
DUCT CONNECTION ALTERNATE METHOD



ELEVATION VIEW



OUTLET VIEW

- NOTES:
- FOR DIMENSIONS AND RATED AIRFLOW SEE TABLE ON SHEET 2.
 - DOUBLE SKIN INSULATED WALL CONSTRUCTION.
 - LOCATION OF ACCESS DOOR (LEFT OR RIGHT HAND SIDE) TO BE ADVISED BY PURCHASER. RIGHT HAND DOOR IS SHOWN.
 - UNITS EXCEEDING 6 FT. [1829 MM] IN HEIGHT WILL HAVE A 2 3/4" [70MM] CENTER DIVIDER RAIL.

PROJECT NAME:									
CHEMICAL FILTER DETAILS									
ITEM IDENTIFICATION NUMBER	QUANTITY	SIZE	HEIGHT	WIDTH	DEPTH	MODEL NUMBER	DOOR LOCATION	AIRFLOW	NOM. FACE VELOCITY
			IN. [mm]	IN. [mm]	IN. [mm]		LHS/RHS/BOTH	ACFM [c.m.h.]	F.P.M. [m.p.s.]
						CG			

---SALES DRAWING---

Confidential Property of AAF International
P.O. Box 35690
Louisville, Ky. 40232-5690
www.aafintl.com

Scale: 1" = 1'-6"
Date: JULY 06
Appr: K.O.
Date: JULY 06

Third Angle Projection

SIDE ACCESS FILTER HOUSING
SAAF CG CASSETTE
SAH-XXX-CG

SHEET SIZE: D
SECTION NO.: 114D-3025848
SHEET 1 OF 2

REV. D

LTR.	CHANGE	CK'D	DATE	APPR	DATE

SIZES, RATED AIRFLOW, DIMENSIONS, WEIGHTS AND FILTER QUANTITIES												
SIZE	NOMINAL FILTER FACE AREA		NOMINAL AREA SQ. FT. [sq. m.]	NOMINAL FACE VELOCITY FPM [m/s]	AIR FLOW @ 500 F.P.M. C.F.M. [c.m.h.]	A Inches [mm]	B Inches [mm]	C Inches [mm]	D Inches [mm]	OPERATING WEIGHT lbs[kg]	SHIPPING WEIGHT lbs[kg]	FILTER QTY. CASS.
	HEIGHT	WIDTH										
	FT. [mm]	FT. [mm]										
202	2.0 [610]	2.0 [610]	4.0 [0.372]	500 [2.54]	2000 [3398]	28.15 [715]	25.98 [660]	23.61 [600]	25.79 [655]	195 [88]	137 [62]	2
204	2.0 [610]	4.0 [1219]	8.0 [0.743]	500 [2.54]	4000 [6796]	28.15 [715]	49.61 [1260]	47.24 [1200]	25.79 [655]	315 [143]	188 [85]	4
206	2.0 [610]	6.0 [1829]	12.0 [1.115]	500 [2.54]	6000 [10194]	28.15 [715]	73.23 [1860]	67.12 [1704]	25.79 [655]	440 [200]	246 [111]	6
208	2.0 [610]	8.0 [2438]	16.0 [1.486]	500 [2.54]	8000 [13592]	28.15 [715]	96.85 [2460]	94.48 [2400]	25.79 [655]	568 [26]	305 [139]	8
402	4.0 [1325]	2.0 [610]	8.0 [0.743]	500 [2.54]	4000 [6796]	52.17 [1325]	25.98 [660]	23.61 [600]	49.80 [1265]	302 [137]	174 [79]	4
404	4.0 [1219]	4.0 [1219]	16.0 [1.486]	500 [2.54]	8000 [13592]	52.17 [1325]	49.61 [1260]	47.24 [1200]	49.80 [1265]	517 [234]	247 [112]	8
406	4.0 [1219]	6.0 [1828]	24.0 [2.230]	500 [2.54]	12000 [20388]	52.17 [1325]	73.23 [1860]	70.86 [1800]	49.80 [1265]	733 [333]	323 [146]	12
408	4.0 [1219]	8.0 [2438]	32.0 [2.973]	500 [2.54]	16000 [27184]	52.17 [1325]	96.85 [2460]	94.48 [2400]	49.80 [1265]	950 [431]	398 [181]	16
410	4.0 [1219]	10.0 [3048]	40.0 [3.716]	500 [2.54]	20000 [33980]	52.17 [1325]	120.47 [3060]	118.10 [3000]	49.80 [1265]	1166 [529]	474 [215]	20
604	6.0 [1829]	4.0 [1219]	24.0 [2.230]	500 [2.54]	12000 [20388]	79.13 [2010]	49.61 [1260]	47.24 [1200]	76.77 [1950]	727 [330]	316 [143]	12
606	6.0 [1829]	6.0 [1829]	36.0 [3.345]	500 [2.54]	18000 [30582]	79.13 [2010]	73.23 [1860]	70.86 [1800]	76.77 [1950]	1033 [469]	408 [185]	18
608	6.0 [1829]	8.0 [2438]	48.0 [4.459]	500 [2.54]	24000 [40776]	79.13 [2010]	96.85 [2460]	94.48 [2400]	76.77 [1950]	1339 [607]	500 [227]	24
610	6.0 [1829]	10.0 [3048]	60.0 [5.574]	500 [2.54]	30000 [50970]	79.13 [2010]	120.47 [3060]	118.10 [3000]	76.77 [1950]	1644 [746]	591 [268]	30
806	8.0 [2438]	6.0 [1829]	48.0 [4.459]	500 [2.54]	24000 [40776]	103.15 [2620]	73.23 [1860]	70.86 [1800]	100.79 [2560]	1330 [603]	490 [222]	24
808	8.0 [2438]	8.0 [2438]	64.0 [5.946]	500 [2.54]	32000 [54368]	103.15 [2620]	96.85 [2460]	94.48 [2400]	100.79 [2560]	1728 [784]	601 [272]	32
810	8.0 [2438]	10.0 [3048]	80.0 [7.432]	500 [2.54]	40000 [67960]	103.15 [2620]	120.47 [3060]	118.10 [3000]	100.79 [2560]	2122 [963]	708 [321]	40

SPECIFICATIONS							
HOUSING TYPE				"CERTIFIED" LEAK PROOF DOUBLE WALLED INSULATED AHU GRADE CONSTRUCTION			
HOUSING MATERIAL	CHECK ONE	STANDARD	<input type="checkbox"/>	PAINTED STEEL			
		OPTIONS	<input type="checkbox"/>	GALVALUME			
			<input type="checkbox"/>	STAINLESS STEEL			
WEATHER COVER (OPTIONAL)				<input type="checkbox"/>			
CHANNEL BASE (OPTIONAL)				<input type="checkbox"/>			
FILTER SCHEDULE FOR SAH-XXX-CG							
TYPE	FILTER	MERV RATING	CHEMICAL MEDIA	CHECK ONE	PART NUMBER	QTY.	NOMINAL SIZE (HIGH x WIDE x DEEP) IN. [mm.]
CHEMICAL FILTER BANK #1	CG CASSETTE	N/A	SAAF OXIDANT	<input type="checkbox"/>	114-3024155-2(D)		24 x 12 x 12 [610 x 305 x 305]
			SAAF CARB	<input type="checkbox"/>	114-3024155-3(D)		
			SAAF BLEND	<input type="checkbox"/>	114-3024155-7(D)		
			OTHER Δ	<input type="checkbox"/>			

NOMINAL PRESSURE DROP IN WG. [pa] @ 500 F.P.M. [2.54 m/s] NOM. FACE VELOCITY									
CHEMICAL MEDIA		SAAF OXIDANT		SAAF CARB		SAAF BLEND		ACTUAL (COMPLETE IF ONE OF THE STANDARD OPTIONS AT LEFT IS NOT USED)	
TYPE		INITIAL ΔP	FINAL ΔP	INITIAL ΔP	FINAL ΔP	INITIAL ΔP	FINAL ΔP	INITIAL ΔP	FINAL ΔP
CHEMICAL FILTER BANK #1	HD CASSETTE	0.47 [117]	0.47 [117]	0.56 [139]	0.56 [139]	0.57 [142]	0.57 [142]		
	TOTAL ΔP IN. W.G. [pa]	0.47 [117]	0.47 [117]	0.56 [139]	0.56 [139]	0.57 [142]	0.57 [142]		

NOTES:
 Δ DEPENDING ON THE APPLICATION, AAF MAY RECOMMEND AN ALTERNATE ENGINEERED CHEMICAL MEDIA.
 Δ OPERATING WEIGHT SHOWN IS BASED ON AAF SAAFOXIDANT CHEMICAL FILTER MEDIA.

--SALES DRAWING--

NEXT ASSEMBLY

Tolerance Unless Otherwise Specified: $\pm 1/16$	Material	Scale	Confidential Property of AAF International
Third Angle Projection	SAF K.O. Date 5 JULY 06	SAF K.O. Date 5 JULY 06	P.O. Box 35690 Louisville, Ky. 40232-5690 www.aafintl.com
SIDE ACCESS FILTER HOUSING SAAF CG CASSETTE SAH-XXX-CG		SHEET SIZE D	SECTION NO. 114D-3025848 SHEET 2 OF 2