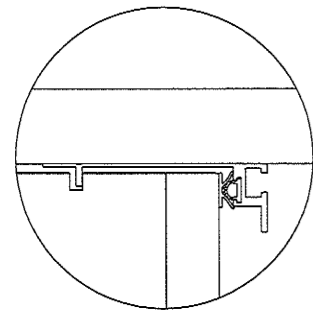
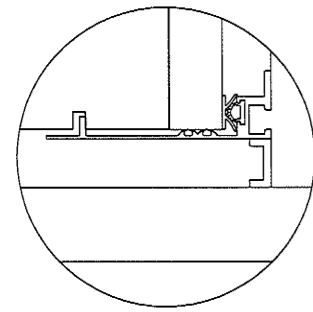


LTR.	CHANGE	CK'D	DATE	APPR	DATE

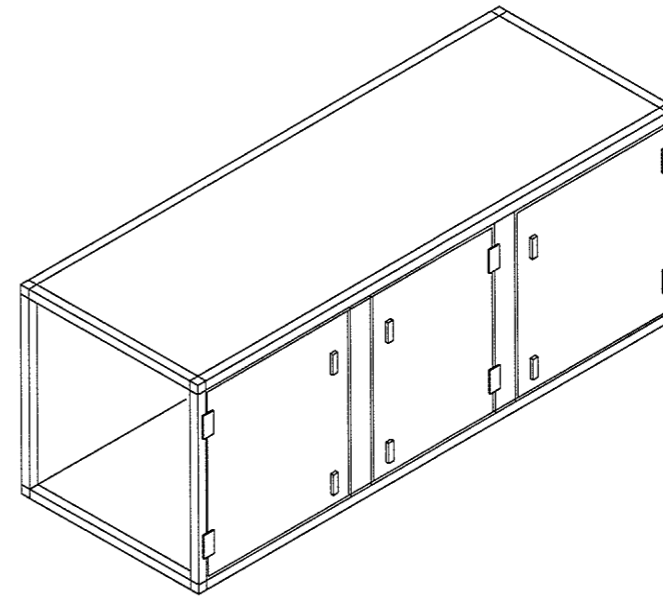
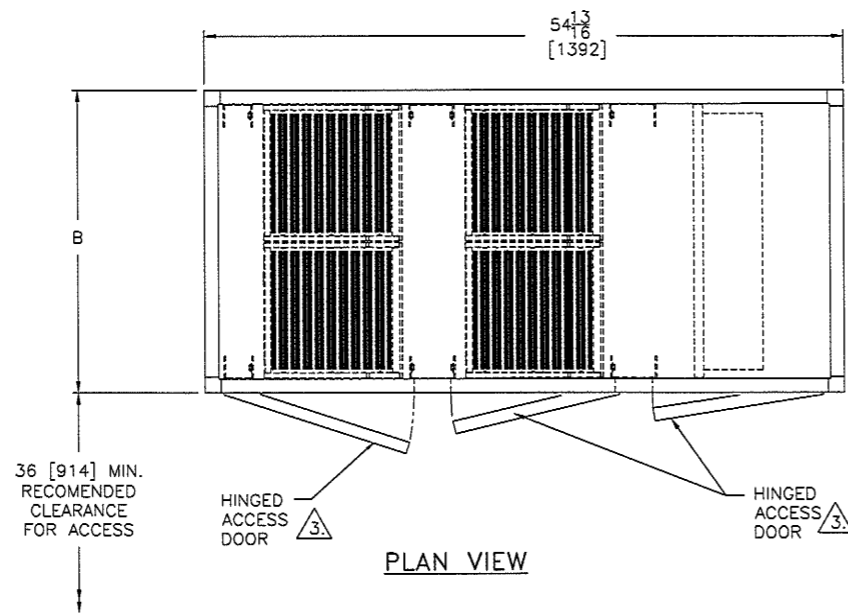


DETAIL A

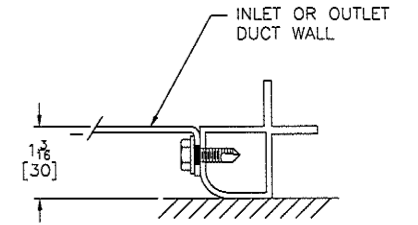


DETAIL B

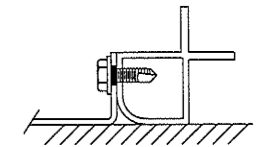
DETAILS A AND B SHOW AAF'S PATENT PENDING SAAFSEAL HIGH INTEGRITY SEALING SYSTEM.



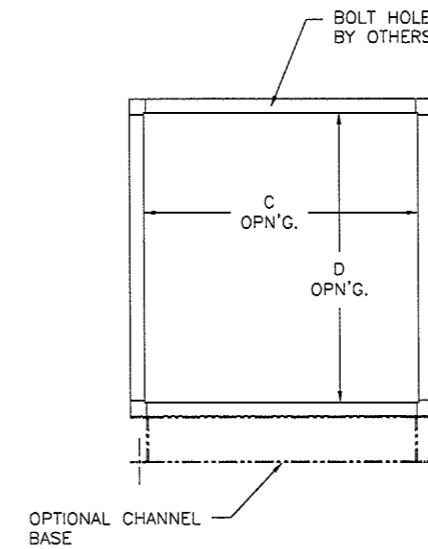
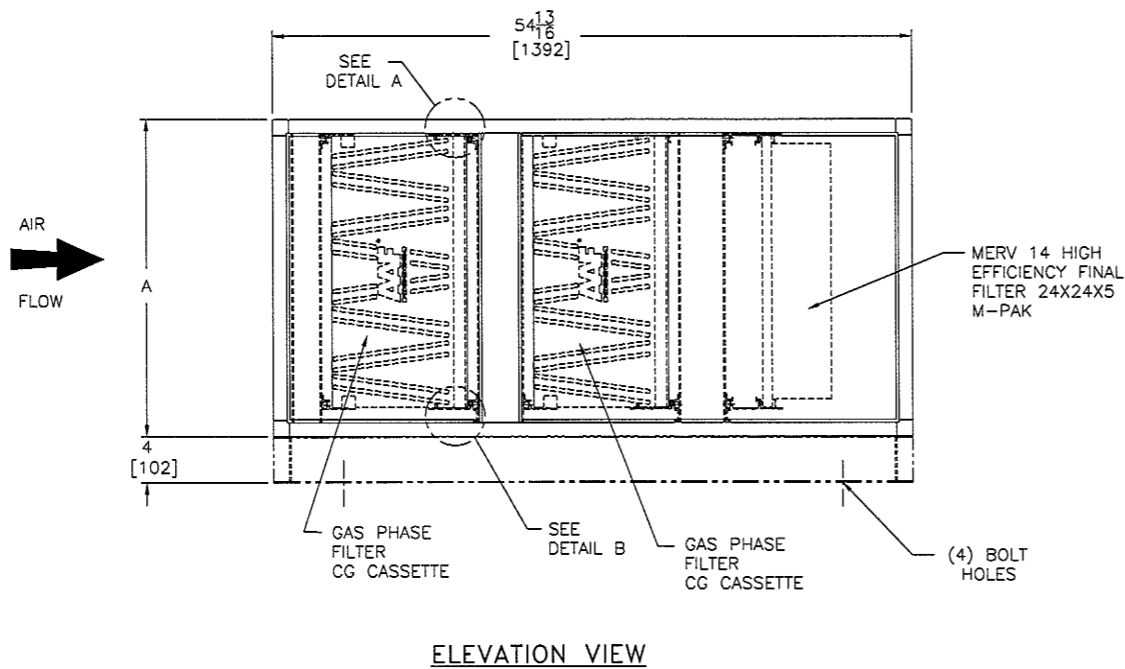
ISOMETRIC VIEW
INTERNALS NOT SHOWN



DETAIL C
DUCT CONNECTION



DETAIL C
DUCT CONNECTION ALTERNATE METHOD



- NOTES:
- FOR DIMENSIONS AND RATED AIRFLOW SEE TABLE ON SHEET 2.
 - DOUBLE SKIN INSULATED WALL CONSTRUCTION.
 - LOCATION OF ACCESS DOOR (LEFT OR RIGHT HAND SIDE) TO BE ADVISED BY PURCHASER. RIGHT HAND DOOR IS SHOWN.
 - UNITS EXCEEDING 6 FT. [1829 MM] IN HEIGHT WILL HAVE A 2 3/4" [70MM] CENTER DIVIDER RAIL.

PROJECT NAME:		JOB NO.:							
CHEMICAL FILTER DETAILS									
ITEM IDENTIFICATION NUMBER	QUANTITY	SIZE	HEIGHT IN. [mm]	WIDTH IN. [mm]	DEPTH IN. [mm]	MODEL NUMBER	DOOR LOCATION LHS/RHS/BOTH	AIRFLOW ACFM [c.m.h.]	NOM. FACE VELOCITY F.P.M. [m.p.s.]
						CG			

--SALES DRAWING--

Tolerance Unless Otherwise Specified:	Material:	Scale:	Confidential Property of AAF International P.O. Box 35690 Louisville, Ky. 40232-5690 www.aafintl.com
Third Angle Projection:	Drawn By: <i>MARTIN</i> Date: 9 APR 09	Checked By: <i>MED</i> Date: 12 MAY 09	Approved By: <i>MED</i> Date: 12 MAY 09
SIDE ACCESS FILTER HOUSING SAAF CG CASSETTE SAH-XXX-CG-CG-6F		SHEET SIZE: D	SECTION NO. 114D-3056116 SHEET 1 OF 2

SIZE	NOMINAL FILTER FACE AREA		NOMINAL AREA SQ. FT. [sq. m.]	NOMINAL FACE VELOCITY FPM [m/s]	AIR FLOW @ 500 F.P.M. C.F.M. [c.m.h.]	A Inches [mm]	B Inches [mm]	C Inches [mm]	D Inches [mm]	OPERATING WEIGHT lbs[kg]	SHIPPING WEIGHT lbs[kg]	FILTER QUANTITIES		
	HEIGHT FT. [mm]	WIDTH FT. [mm]										NOMINAL FILTER FACE AREA HIGH x WIDE IN. [mm]	FILTER QTY. PER BANK	GAS PHASE
202	2.0 [610]	2.0 [610]	4.0 [0.372]	500 [2.54]	2000 [3398]	28.15 [715]	25.98 [660]	23.61 [600]	25.79 [655]	354 [161]	198 [89]	24 x 24 [610 x 610]	1	2
204	2.0 [610]	4.0 [1219]	8.0 [0.743]	500 [2.54]	4000 [6796]	28.15 [715]	49.61 [1260]	47.24 [1200]	25.79 [655]	618 [280]	306 [139]	24 x 24 [610 x 610]	2	4
206	2.0 [610]	6.0 [1829]	12.0 [1.115]	500 [2.54]	6000 [10194]	28.15 [715]	73.23 [1860]	67.12 [1704]	25.79 [655]	877 [398]	410 [186]	24 x 24 [610 x 610]	3	6
208	2.0 [610]	8.0 [2438]	16.0 [1.486]	500 [2.54]	8000 [13592]	28.15 [715]	96.85 [2460]	94.48 [2400]	25.79 [655]	1138 [516]	514 [233]	24 x 24 [610 x 610]	4	8
402	4.0 [1219.2]	2.0 [610]	8.0 [0.743]	500 [2.54]	4000 [6796]	52.17 [1325]	25.98 [660]	23.61 [600]	49.80 [1265]	686 [311]	374 [170]	24 x 24 [610 x 610]	2	4
404	4.0 [1219]	4.0 [1219]	16.0 [1.486]	500 [2.54]	8000 [13592]	52.17 [1325]	49.61 [1260]	47.24 [1200]	49.80 [1265]	1146 [520]	522 [237]	24 x 24 [610 x 610]	4	8
406	4.0 [1219]	6.0 [1829]	24.0 [2.230]	500 [2.54]	12000 [20388]	52.17 [1325]	73.23 [1860]	70.86 [1800]	49.80 [1265]	1637 [743]	701 [318]	24 x 24 [610 x 610]	6	12
408	4.0 [1219]	8.0 [2438]	32.0 [2.973]	500 [2.54]	16000 [27184]	52.17 [1325]	96.85 [2460]	94.48 [2400]	49.80 [1265]	2129 [966]	881 [400]	24 x 24 [610 x 610]	8	16
410	4.0 [1219]	10.0 [3048.0]	40.0 [3.716]	500 [2.54]	20000 [33980]	52.17 [1325]	120.47 [3060]	118.10 [3000]	49.80 [1265]	2620 [1188]	1060 [481]	24 x 24 [610 x 610]	10	20
604	6.0 [1829]	4.0 [1219]	24.0 [2.230]	500 [2.54]	12000 [20388]	79.13 [2010]	49.61 [1260]	47.24 [1200]	76.77 [1950]	1703 [773]	767 [348]	24 x 24 [610 x 610]	6	12
606	6.0 [1829]	6.0 [1829]	36.0 [3.345]	500 [2.54]	18000 [30582]	79.13 [2010]	73.23 [1860]	70.86 [1800]	76.77 [1950]	2437 [1106]	1033 [469]	24 x 24 [610 x 610]	9	18
608	6.0 [1829]	8.0 [2438]	48.0 [4.459]	500 [2.54]	24000 [40776]	79.13 [2010]	96.85 [2460]	94.48 [2400]	76.77 [1950]	3172 [1439]	1299 [590]	24 x 24 [610 x 610]	12	24
610	6.0 [1829]	10.0 [3048]	60.0 [5.574]	500 [2.54]	30000 [50970]	79.13 [2010]	120.47 [3060]	118.10 [3000]	76.77 [1950]	3828 [1737]	1488 [675]	24 x 24 [610 x 610]	15	30
806	8.0 [2438]	6.0 [1829]	48.0 [4.459]	500 [2.54]	24000 [40776]	103.15 [2620]	73.23 [1860]	70.86 [1800]	100.79 [2560]	3240 [1470]	1368 [621]	24 x 24 [610 x 610]	12	24
808	8.0 [2438]	8.0 [2438]	64.0 [5.946]	500 [2.54]	32000 [54368]	103.15 [2620]	96.85 [2460]	94.48 [2400]	100.79 [2560]	4220 [1914]	1724 [782]	24 x 24 [610 x 610]	16	32
810	8.0 [2438]	10.0 [3048]	80.0 [7.432]	500 [2.54]	40000 [67960]	103.15 [2620]	120.47 [3060]	118.10 [3000]	100.79 [2560]	5201 [2359]	2081 [944]	24 x 24 [610 x 610]	20	40

NOTES:

△ THE FILTER SELECTIONS SHOWN HAVE BEEN MADE TO MAXIMIZE THE PERFORMANCE OF THE SYSTEM. HOWEVER, ALTERNATE OPTIONS ARE AVAILABLE. WRITE IN ALTERNATE SELECTIONS IF DESIRED. THE FILTER FACE AREA, 24 x 24 [610 x 610] OR 12 x 24 [305 x 610] MUST BE THE SAME AS THE STANDARD FILTERS SHOWN. IF THE DEPTH DIFFERS FROM THE STANDARD 2" [51] (PERFECTPLEAT) OR 6" [152] (M-PAK), CONTACT AAF TO CONFIRM SUITABILITY. IF ALTERNATE DEPTH FILTERS ARE SELECTED, THE LENGTH OF THE FILTER TRAIN WILL CHANGE COMMENSURATELY. MARK DETAILS OF "OTHER SELECTIONS" IN THE APPROPRIATE SPACES.

△ DEPENDING ON THE APPLICATION, AAF MAY RECOMMEND AN ALTERNATE ENGINEERED CHEMICAL MEDIA.

△ THE 2" [51] AFTER FILTER IS INTENDED FOR TEMPORARY USE AT START-UP, AFTER NEW CHEMICAL FILTERS HAVE BEEN INSTALLED, TO COLLECT ANY LOOSE DUST THAT MAY INITIALLY BE EMITTED BY THE CHEMICAL FILTERS. FOR THIS REASON NO PRESSURE PENALTY IS ASSIGNED FOR THIS FILTER. IT IS RECOMMENDED THAT THIS FILTER BE REMOVED AFTER 40 HOURS OF OPERATION.

△ OPERATING WEIGHT SHOWN IS BASED ON AAF SAAF OXIDANT CHEMICAL MEDIA.

SPECIFICATIONS									
HOUSING TYPE					"CERTIFIED" LEAK PROOF DOUBLE WALLED INSULATED AHU GRADE CONSTRUCTION				
HOUSING MATERIAL	CHECK ONE	STANDARD	<input type="checkbox"/>	PAINTED STEEL					
		OPTIONS	<input type="checkbox"/>	GALVALUME					
			<input type="checkbox"/>	STAINLESS STEEL					
WEATHER COVER (OPTIONAL)					<input type="checkbox"/>				
CHANNEL BASE (OPTIONAL)					<input type="checkbox"/>				
FILTER SCHEDULE FOR SAH-XXX-CG-CG-2P-6F									
TYPE	FILTER	MERV RATING	CHEMICAL MEDIA	CHECK ONE	PART NUMBER	QTY.	NOMINAL SIZE (HIGH x WIDE x DEEP) IN. [mm]		
CHEMICAL FILTER BANK #1	CG CASSETTE	N/A	SAAF OXIDANT	<input type="checkbox"/>	114-3024155-2(D)		24 x 12 x 12 [610 x 305 x 305]		
			SAAF CARB	<input type="checkbox"/>	114-3024155-3(D)				
			SAAF BLEND	<input type="checkbox"/>	114-3024155-7(D)				
			OTHER	<input type="checkbox"/>					
CHEMICAL FILTER BANK #2	CG CASSETTE	N/A	SAAF OXIDANT	<input type="checkbox"/>	114-3024155-2(D)		24 x 12 x 12 [610 x 305 x 305]		
			SAAF CARB	<input type="checkbox"/>	114-3024155-3(D)				
			SAAF BLEND	<input type="checkbox"/>	114-3024155-7(D)				
			OTHER	<input type="checkbox"/>					
AFTER FILTER	PERFECT PLEAT	7	N/A	<input type="checkbox"/>	172-102-863		24 x 24 x 2 [610 x 610 x 50] 12 x 24 x 2 [305 x 610 x 50]		
	PERFECT PLEAT	7		<input type="checkbox"/>	172-102-319				
	OTHER SELECTION	△		<input type="checkbox"/>	OTHER SELECTION △				
FINAL FILTER	M - PAK	14	N/A	<input type="checkbox"/>	3014883-008		24 x 24 x 6 [610 x 610 x 153] 12 x 24 x 6 [305 x 610 x 153]		
	M - PAK	14		<input type="checkbox"/>	3014883-001				
	OTHER SELECTION	△		<input type="checkbox"/>	OTHER SELECTION △				
			N/A	<input type="checkbox"/>					
			N/A	<input type="checkbox"/>					

NOMINAL PRESSURE DROP IN WG. [pa] @ 500 F.P.M. [2.54 m/h] NOMINAL FACE VELOCITY									
CHEMICAL MEDIA		SAAF OXIDANT		SAAF CARB		SAAF BLEND		ACTUAL (COMPLETE IF ONE OF THE STANDARD OPTIONS AT LEFT IS NOT USED)	
TYPE		INITIAL ΔP	FINAL ΔP	INITIAL ΔP	FINAL ΔP	INITIAL ΔP	FINAL ΔP	INITIAL ΔP	FINAL ΔP
CHEMICAL FILTER BANK #1	CG CASSETTE	0.47 [117]	0.47 [117]	0.56 [139]	0.56 [139]	0.57 [142]	0.57 [142]		
	CG CASSETTE	0.47 [117]	0.47 [117]	0.56 [139]	0.56 [139]	0.57 [142]	0.57 [142]		
AFTER FILTER SEE NOTE BELOW	STANDARD	2" NOMINAL PERFECTPLEAT, MERV 7	0.000	0.000	0.000	0.000	0.000		
	OTHER								
FINAL FILTER	STANDARD	6" NOMINAL M-PAK, MERV 14	0.542 [135]	1.5 [373]	0.542 [135]	1.5 [373]	0.542 [135]	1.5 [373]	
	OTHER								
TOTAL ΔP (IN. W.G.)			1.482 [369]	2.44 [608]	1.662 [413]	2.62 [651]	1.682 [419]	2.64 [657]	

--SALES DRAWING--

Tolerance Unless Otherwise Specified:	Material:	Scale:	Confidential Property of AAF International P.O. Box 35000 Louisville, Ky. 40232-5600 www.aafint.com
Third Angle Projection	Drawn: <i>MED</i> Date: 9 APR 09	Checked: <i>MED</i> Date: 12 MAY 09	Approved: <i>MED</i> Date: 12 MAY 09
SIDE ACCESS FILTER HOUSING SAAF CG CASSETTE SAH-XXX-CG-CG-6F		SHEET SIZE: D	SECTION NO. 114D-3056116 SHEET 2 OF 2