

THE WORLD LEADER IN CLEAN AIR SOLUTIONS

SAAF™ Side Access Housings

MULTI-STAGE TOTAL CLEAN AIR SYSTEMS



- Combines particulate filters, gas-phase cassettes, and high efficiency filters to create total clean air solutions; removes both airborne particulate and gaseous contaminants
- Patent-pending SAAF™ Seal provides the best seal available and superior filtration efficiency
- Available with internal fan; wide range of sizes and combinations of housings and filter banks
- Insulated double-wall construction
- Allows easy installation, operation, and maintenance in a totally self-contained system

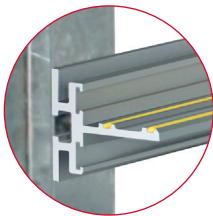
SAAF Side Access Housings are designed to support SAAF chemical media cassette filters, prefilters and afterfilters, and high efficiency particulate filters, all in one self-contained unit for the removal of gas contaminants and airborne particulates. The housings are available in many different combinations and sizes to meet a wide range of applications. SAAF Side Access Housings are a state-of-the-art solution for total air cleaning.

Sealing System Prevents Filter Bypass

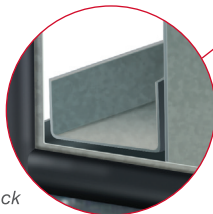
AAF's patent-pending filter sealing system prevents bypass of unfiltered air. Cassettes and filters are locked in place by a combination of cassette notches and cassette locator bars. Designed to maintain optimal positioning of the cassettes, the locator bar compresses the cassette into the sealing gasket. This unique system is completely effective and ensures exceptional filter efficiency.

Built for Strength

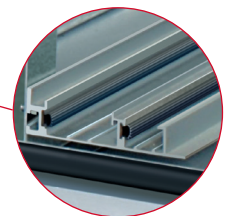
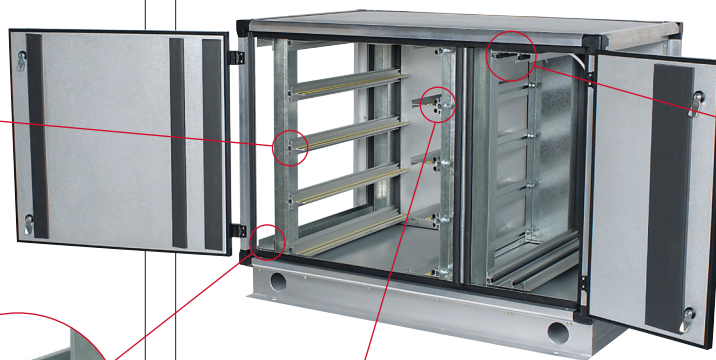
SAAF Side Access Housings are constructed of stainless steel, aluminum, or painted steel for maximum protection and durability. Double walled panels and doors provide whisper quiet operation.



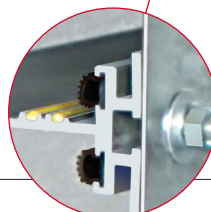
The cassette support track (non-sealing face shown above) is constructed of extruded aluminum.



2" Prefilter track



Afterfilter and final filter tracks constructed of extruded aluminum hold 2" afterfilters and 6" deep high efficiency filters respectively.

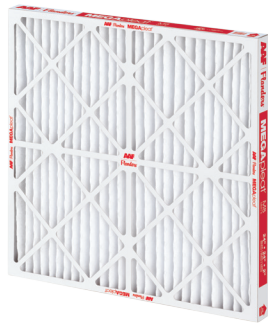


AAF's track installation method provides trouble-free filter installations and changeouts. Precise connections between support tracks and the track support post ensure accurate filter spacing for superior efficiency.

SAAF™ Side Access Housings

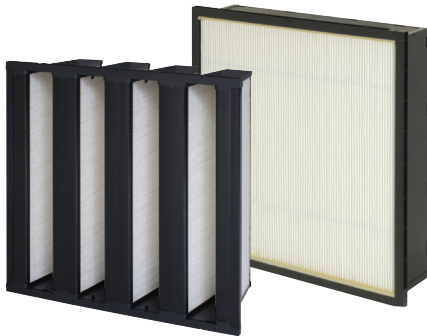
Prefilters and Afterfilters

MEGApleat M8 filters are ideal MERV 8 prefilters, used to prevent the buildup of lint and dust on the face of cassettes and high efficiency filters. Models available in 1", 2", and 4".



High Efficiency Final Filters

SAAF Side Access Housings will accommodate a high efficiency final filter bank to ensure that filtered air meets the highest levels of efficiency.



Product Model Designations

The SAAF Side Access Housings model is designated as follows:

SAH - 202 - 2P - MD - F - MD - 2P - 6F

Side Access Housing

Is nominally 2' high x 2' wide

Supports a 2" deep particulate prefilter, if required

First gas-phase chemical filter bank, supports Type MD cassettes

Fan

Supports a 6" deep particulate final filter, if required

Supports a 2" deep particulate afterfilter, if required

Second gas-phase chemical filter bank, supports Type MD cassettes

Chemical Media Cassettes

Designed to hold SAAF chemical media cassette filters: SAAF™ Cassettes perform and operate at the optimum filtration efficiency and come in the following types – Medium Duty, Heavy Duty and Cleanroom Grade.



Product Information

Model	Nominal Dimensions H Ft W Ft		Cassette Selection		
			SAAF HD Airflow @ 250 FPM Velocity	SAAF MD Airflow @ 500 FPM Velocity	SAAF CG Airflow @ 500 FPM Velocity
102	1		2	500	1,000
104	1		4	1,000	2,000
202	2		2	1,000	2,000
204	2		4	2,000	4,000
206	2		6	3,000	6,000
302	3		2	1,500	3,000
304	3		4	3,000	6,000
306	3		6	4,500	9,000
402	4		2	2,000	4,000
404	4		4	4,000	8,000
406	4		6	6,000	12,000
408	4		8	8,000	16,000
410	4		10	10,000	20,000
504	5		4	5,000	10,000
506	5		6	7,500	15,000
508	5		8	10,000	20,000
510	5		10	12,500	25,000
604	6		4	6,000	12,000
606	6		6	9,000	18,000
608	6		8	12,000	24,000
610	6		10	15,000	30,000



9920 Corporate Campus Drive, Suite 2200, Louisville, KY 40223-5690
888.223.2003 Fax 888.223.6500 | aafintl.com

AAAF has a policy of continuous product research and improvement. We reserve the right to change design and specifications without notice.

©2023 AAAF International and its affiliated companies.

ISO Certified Firm

GPF-1-106F 12/23