

BioCel VXLA

SWINE INDUSTRY BREAKTHROUGH



Description

The BioCel VXLA high-efficiency 17" filter delivers class-leading protection for your herd, helping to maximize air flow and reduce maintenance costs. In addition, its sturdy construction allows it to withstand the rigors of handling, installation, operation, and changeout, including the challenges presented by farm pests.

Product Highlights

- High filtration efficiency options – MERV15 & MERV16
- 17" Deep for superior air flow
- Moisture-resistant
- Rugged construction
- Quick and easy maintenance
- Maximum operating temperature 158°F
- 23⁵/₁₆"W x 23⁵/₁₆"H x 17⁵/₁₆"D

Vertical Pleats

Water-repellent media arranged in vertical pleats to maximize drainage of moisture and ensure maximum efficiency.



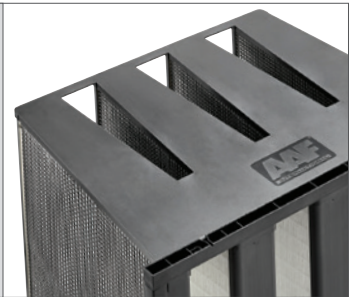
Plastic Screen

Plastic protection screens on the downstream side of the filter provide increased stability and deliver protection from mice and other farm pests.



Durable Construction

In addition to the plastic screen, the media is moisture-resistant, while the corrosion proof plastic frame is built with top and bottom channels filled with media and 100% sealed with urethane potting. However, the filter is landfill-safe and 100% incinerable.



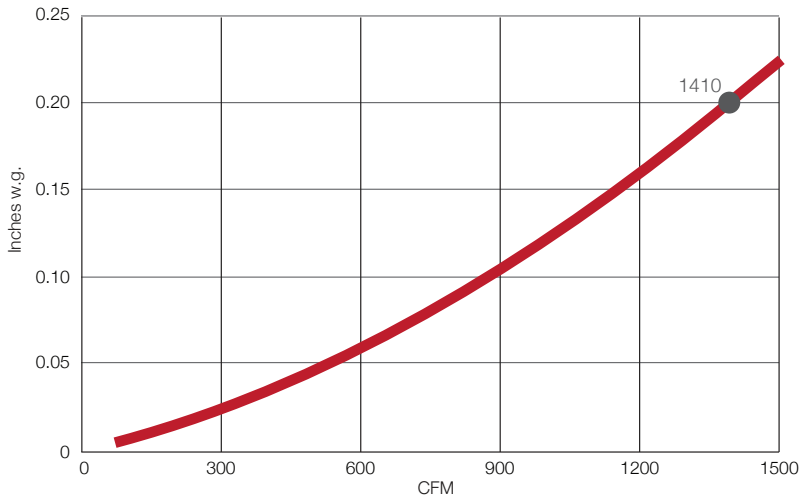
Leak Free Seal

The seamless, foam-in-place gasket on the BioCel VXLA eliminates particulate bypass around the filter frame.

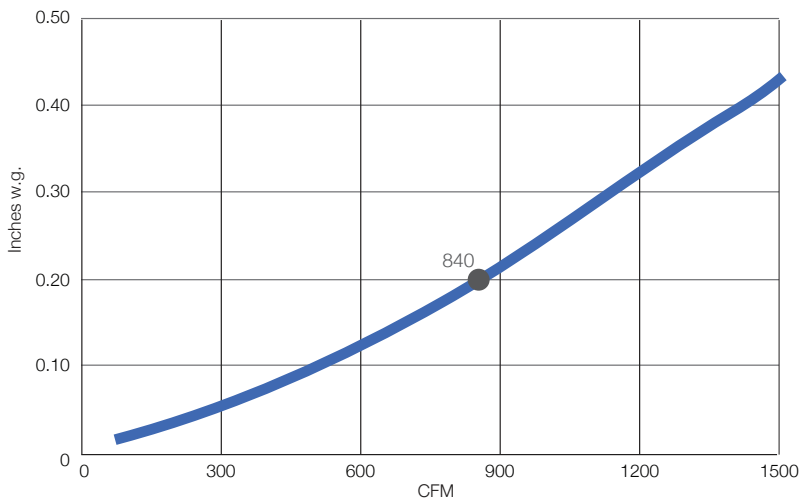


BioCel VXLA

Performance BioCel VXLA MERV 15 (F9)



Performance BioCel VXLA MERV 16 (E10)



9920 Corporate Campus Drive, Suite 2200, Louisville, KY 40223-5690
888.223.2003 Fax 888.223.6500 | aafintl.com

AAF has a policy of continuous product research and improvement. We reserve the right to change design and specifications without notice.

©2023 AAF International and its affiliated companies.

ISO Certified Firm

AFP-1-103A