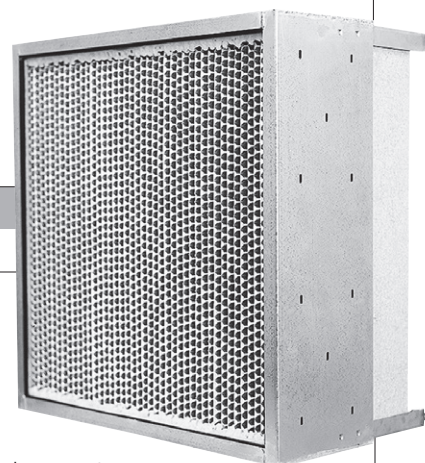


A-4 Frame

GEL SEAL HEPA FILTER HOLDING FRAMES



Benefits

- Reliable, Long-Term Performance
- Fast, Accurate Installation
- Leak-Free Seal Assurance
- Flexible Service Access
- Time-Saving Swing Arm Option
- Supports Multi-Stage Filtration
- Corrosion-Resistant Construction
- Customizable to Fit Your System

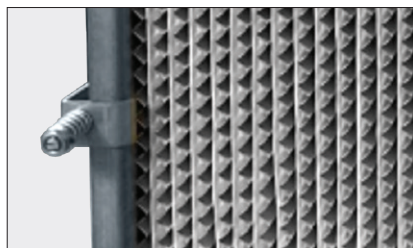
Standard sizes include:

- 24" x 24"
 - 24" x 12"
 - 12" x 24"
- Additional sizes like 24" x 30" and undersized variations also available*

Options

- Type 304 Stainless Steel
- Custom Sizes
- A4S – Swing Arm Design

Optional swing arm design enables fast, secure filter changes with no tools required.



Durable Frame, Fast Filter Changes

The AAF A-4 Frame is a durable, permanent solution for assembling HEPA/ULPA filter banks ideal for both OEM builds and field installations. Designed for long-term performance, it ensures a secure fit and consistent efficiency in demanding environments.

Each filter is held in place with locking arm and screw assemblies, designed for 12" deep casings. For faster, easier maintenance, an optional swing bolt allows quick, secure filter changes without compromising performance.

When installed according to AAF's guidelines, the A-4 Frame delivers the same high-efficiency performance as the filters it holds, without leaks or bypass, ensuring reliable protection and system integrity.

Superior Design and Construction

The AAF A-4 Frame is built for durability and precision, using 14-gauge galvanized steel with a fully welded sealing surface and reinforced, intermittently welded sides for lasting strength.

Factory-drilled alignment holes on each side help ensure fast, accurate positioning making filter bank assembly straightforward and efficient. Inside the frame, welded alignment bars guide the filter into the proper position to ensure a tight, reliable seal with the knife-edge flange that fits into the filter's gel channel.

Each frame comes equipped with four removable locking arm and screw assemblies. These are easily adjustable for quick installation and create a secure, pressure-tight fit between the filter's gel seal and the knife-edge frame delivering optimal protection against bypass leakage over the life of the system.

For added functionality, the swing arm design can also be selected to accommodate a prefilter by incorporating longer swing arms, a prefilter frame, and prefilter retainer clips providing flexibility to meet multi-stage filtration needs without compromising ease of access or performance.

Installation Considerations

A-4 Frames can be installed for service from either the air entering (upstream) or air leaving (downstream) side, depending on system layout. For easy filter access, allow at least 36 inches of clearance. If the HEPA/ ULPA filter bank is arranged for air entering side service, this clearance space may be shared with downstream serviced ASHRAE-rated prefilters to help optimize serviceability without requiring additional space.

A-4 Frame

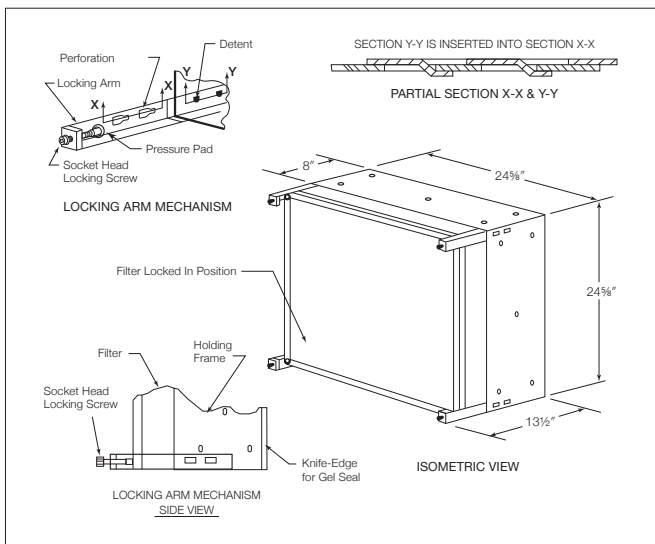
Product Information – Standard Sizes

Type	Model	HEPA Frame Size HxWxD	HEPA Filter Size	Prefilter Frame Size HxWxD
A4	A4(GLV) GGF	24.625" x 24.625" x 8"	24" x 24" x 11.5"	N/A
	A4(GLV) CGF	12.625" x 24.625" x 8"	12" x 24" x 11.5"	N/A
	A4(GLV) GCF	24.625" x 12.625" x 8"	24" x 12" x 11.5"	N/A
A4-S	A4-S-(GLV) GG-F	24.625" x 24.625" x 8"	24" x 24" x 11.5"	N/A
	A4-S-(GLV) CG-F	12.625" x 24.625" x 8"	12" x 24" x 11.5"	N/A
	A4-S-(GLV) GC-F	24.625" x 12.625" x 8"	24" x 12" x 11.5"	N/A
A4-S with Prefilter Frame	A4-S (GLV) GG-F-PF1	24.625" x 24.625" x 8"	24" x 24" x 11.5"	24" x 24" x 3"
	A4-S (GLV) CG-F-PF1	12.625" x 24.625" x 8"	12" x 24" x 11.5"	12" x 24" x 3"
	A4-S (GLV) GC-F-PF1	24.625" x 12.625" x 8"	24" x 12" x 11.5"	24" x 12" x 3"

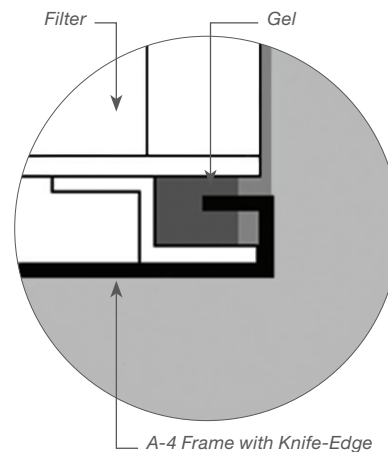
NOTES:

- For ordering 304 SST, change GLV to 304
- Filters not included in models listed must be ordered separately
- Clips for a 2" pleated prefilter are included on the A4-S with prefilter frame
- HEPA frame depth with standard arm does not include the adjustable bolt

Type	Model	HEPA Frame Depth with Standard Arm/Swing Bolt	Standard Arm per Frame	Swing Bolts per Frame
A4	A4(GLV) GGF	13.0625"	4	N/A
	A4(GLV) CGF	13.0625"	4	N/A
	A4(GLV) GCF	13.0625"	4	N/A
A4-S	A4-S-(GLV) GG-F	13"	N/A	4
	A4-S-(GLV) CG-F	13"	N/A	2
	A4-S-(GLV) GC-F	13"	N/A	4
A4-S with Prefilter Frame	A4-S (GLV) GG-F-PF1	16"	N/A	4
	A4-S (GLV) CG-F-PF1	16"	N/A	2
	A4-S (GLV) GC-F-PF1	16"	N/A	4



A-4 Gel Seal



9920 Corporate Campus Drive, Suite 2200, Louisville, KY 40223-5690
888.223.2003 | aafintl.com

AAF International has a policy of continuous product research and improvement. We reserve the right to change design and specifications without notice.

©2025 AAF International and its affiliated companies.

ISO Certified Firm

AFP-1-375D 07/25