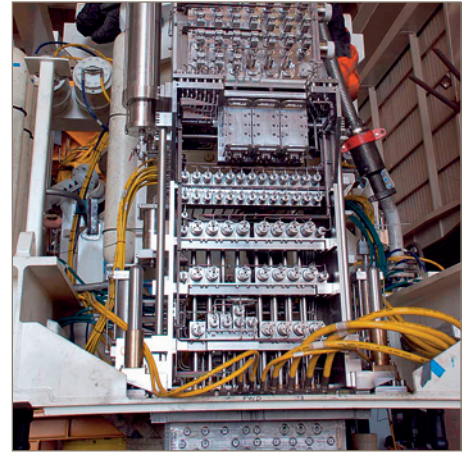


2390N BOP stack hoses MUX Hot lines



For those applications where collapse resistance is not an issue, Parker 2390N hose is an economical stack hose that offers a rugged construction and is ideal for pressure testing, portable hydraulic tools and for offshore hydraulic systems.

Parker's 2390N is good suit as 1" Hot line in continuous lengths up to 3000 m (9800 ft) for MUX System applications. These hoses are made from methanol washed PA11 core tube reinforced with layers of a high-strength wire and jacked with a weather resistant thermoplastic cover.

Crimp your own assembly: BOP hoses are available as bulk hose on a drum and Crimp on a Parkrimp system or on a free adjustable crimper.



Contact information:

Parker Hannifin GmbH
Polyflex Division
An der Tuchbleiche 4
D – 68623 Lampertheim

Tel 06256 81-0
Fax 06256 81-100
polyflex@parker.com

www.parker.com/polyflex

Product Features:

- Internal Diameter ½", ¾" and 1"
- Resistance to methanol, glycol and water based fluids
- Continuous lengths up to 3000m (9,800 ft)
- Cover: Polyurethane in Blue, green, yellow, black colours
- COLORGARD, dual colour safety feature with extra thick cover for superior abrasion resistance.
- Temperature 100 °C , Max 70 °C safety for water or methanol based fluids
- Working Pressures up to 12,000 psi (830 bar)

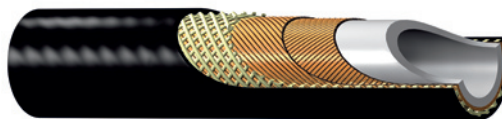


ENGINEERING YOUR SUCCESS.

2390N – BOP Hoses/MUX Hot Lines

MAIN FEATURES:

- Extremely Low Volumetric Expansion
- Low dimensional change under pressure
- Smooth bore for low pressure drop



APPLICATIONS:

- Low volumetric expansion hose. Used for subsea hydraulic controls and as long length hot-line hose for Subsea BOP systems.

CONSTRUCTION:

Core tube : Polyamide
Pressure reinforcement : High strength wire
Cover : Polyurethane
Colour : V12: blue, V13: green, V16: yellow

TEMPERATURE RANGE:

SF 4:1: -40°C up to +100°C, max. 70°C for water or methanol based fluids.
 SF 2.5:1: -40°C up to +60°C

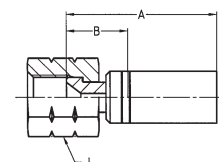
SIZES AND DATA:

#	Ø		Ø	⌚		⌚	⌚	⌚	⌚	Max Length	⌚
	size DN	inch mm		inch mm	psi * MPa						
2390N-04Vxx	-04	1/4	0.52	12,000	7,500	30,000	6.29	0.17	11,400	9X	
	6	6.4	13.3	83.0	52.0	206.9	160.0	0.25	3,500		
2390N-08Vxx	-08	1/2	0.83	9,570	6,020	24,080	7.87	0.36	11,400	9X	
	12	12.8	21.0	66.0	41.5	166.0	200.0	0.54	3,500		
2390N-16Vxx	-16	1	1.38	6,530	4,060	16,240	13.39	0.91	11,400	9X	
	25	25.0	35.1	45.0	28.0	112.0	340.0	1.35	3,500		

NOTES:

* Max. working pressure with 2.5:1 safety factor; ** Max. working pressure with 4:1 safety factor
 Additional technical information see Catalogue 4465, chapter "J".

9X Subsea – JIC female swivel fitting (Parkrimp II Modular)



MATERIAL:

Stainless Steel (AISI 316); *: Welded SubSea fitting

#	Ø		⌚	A	B	J	⌚
	size DN	inch mm					
E206JCC3*	-04	1/4	7/16 - 20UNF	1.76	0.76	0.63	12,000
	6	6.4		44.6	19.2	16	83.0
E206JEC3*	-04	1/4	9/16 - 18UNF	1.81	0.81	0.75	12,000
	6	6.4		46.0	20.6	19	83.0
E213JFC4*	-08	1/2	3/4 - 16UNF	3.35	1.61	0.945	9,570
	12	12.7		85.0	41.0	24	66.0
E225JIC3*	-16	1	1 5/16 - 12UNF	4.30	2.10	1.614	6,530
	25	25.4		109.0	53.0	41	45.0

We reserve the right to make technical changes. The data contained correspond to the current status at the time of printing.