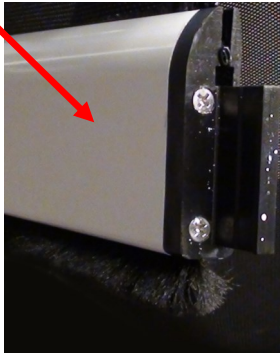


# TCI Screens | Proper Installation of Screen Panel

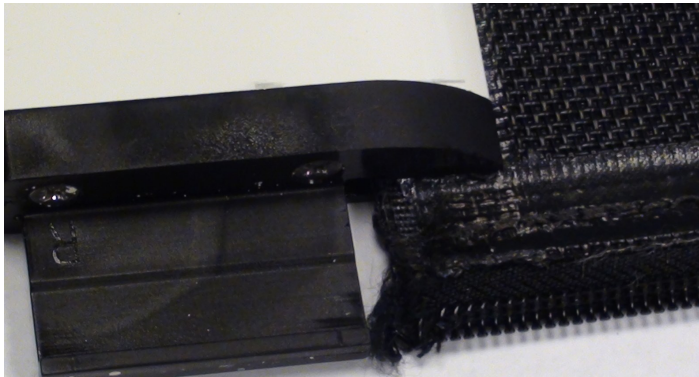
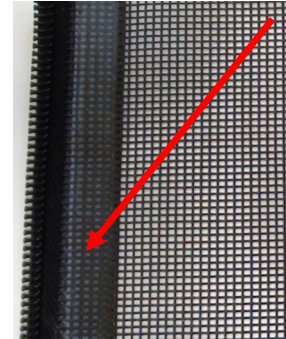
Front of bottom bar  
(front of bar is rounded)



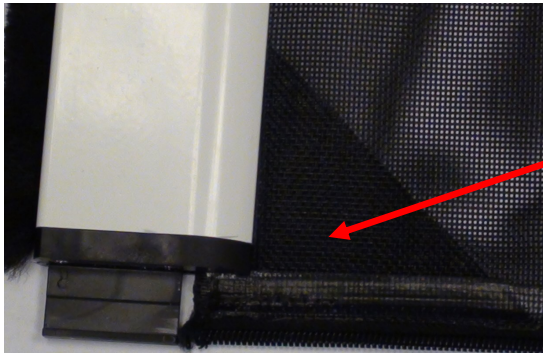
Back of bottom bar  
(back of bar is flat)



Welding always faces  
front of the bottom bar



When installing screen onto bottom bar, ensure that the zipper loops are facing the front of the bottom bar.



Screen re-inforced corner is to face the back of the bottom bar.



When rolled on tube, the zipper should not be visible

