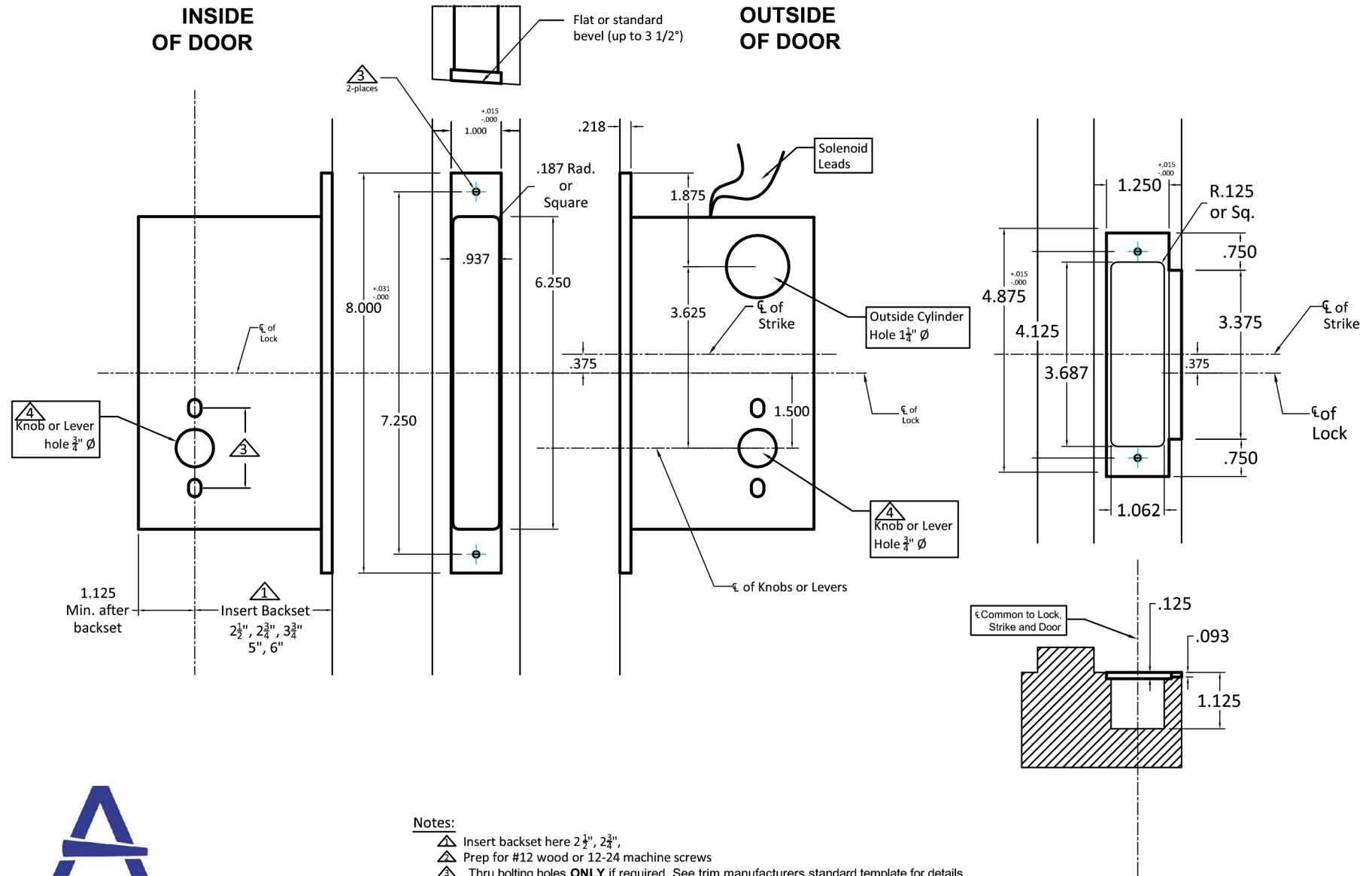


INSIDE  
OF DOOR

OUTSIDE  
OF DOOR



**Notes:**

- △ Insert backset here 2 1/2", 2 3/4",
- △ Prep for #12 wood or 12-24 machine screws
- △ Thru bolting holes **ONLY** if required. See trim manufacturers standard template for details.
- Accurate lock's accommodates 1 1/2" to 1 1/8" center to centers and up to 1/4" dia. post.
- If there are any additional questions about the thru-bolting, please contact our office.
- △ Knob, thumbturn and ER holes may vary from different trim manufacturers. Please refer to their templates to confirm these dimensions.

**Additional Notes:**

- a) **Responsibility:** Door and frame manufacturers are responsible for providing adequate construction or re-inforcement for proper installation of hardware shown.
- b) Please contact us if a double lip strike is needed - for a proper template
- c) See catalog / spec sheets for additional lock details

T-ALH.M9045E/M9056E/M9059E.LL

Standard M9045E/M9056E/M9059E  
Lever x Lever or Knob x Knob Template  
All Backsets