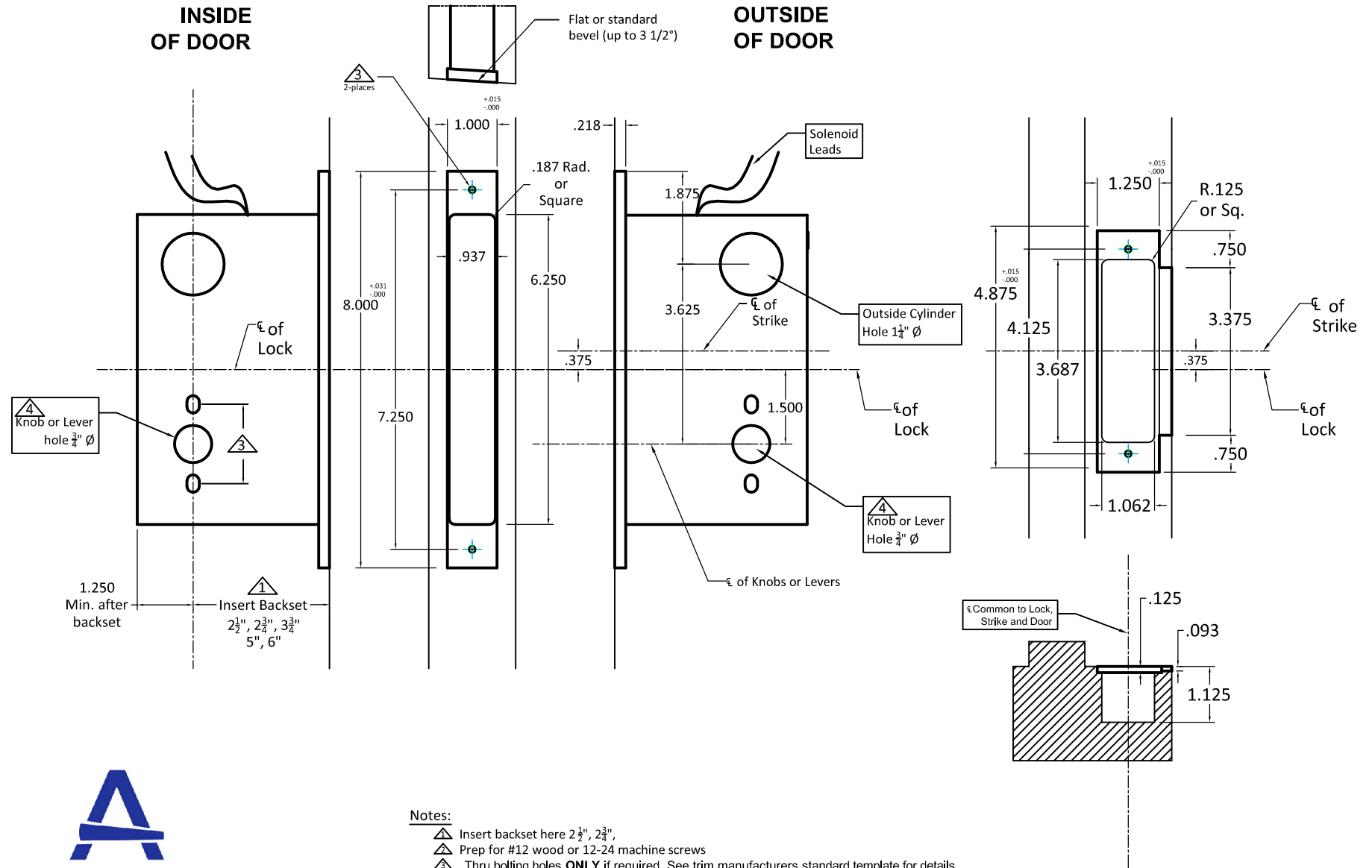


**INSIDE
OF DOOR**

**OUTSIDE
OF DOOR**



Notes:

- ⚠ Insert backset here $2\frac{1}{2}''$, $2\frac{3}{4}''$,
 - ⚠ Prep for #12 wood or 12-24 machine screws
 - ⚠ Thru bolting holes **ONLY** if required. See trim manufacturers standard template for details.
- Accurate lock's accommodates $1\frac{3}{8}''$ to $1\frac{11}{16}''$ center to centers and up to $\frac{1}{4}''$ dia. post.
- If there are any additional questions about the thru-bolting, please contact our office.
- ⚠ Knob, thumbturn and ER holes may vary from different trim manufacturers. Please refer to their templates to confirm these dimensions.

Additional Notes:

- a) **Responsibility:** Door and frame manufacturers are responsible for providing adequate construction or re-inforcement for proper installation of hardware shown.
- b) Please contact us if a double lip strike is needed - for a proper template
- c) See catalog / spec sheets for additional lock details

Standard M9058E Lever x Lever
or Knob x Knob Template
All Backsets

T-ALH.M9058E.LL