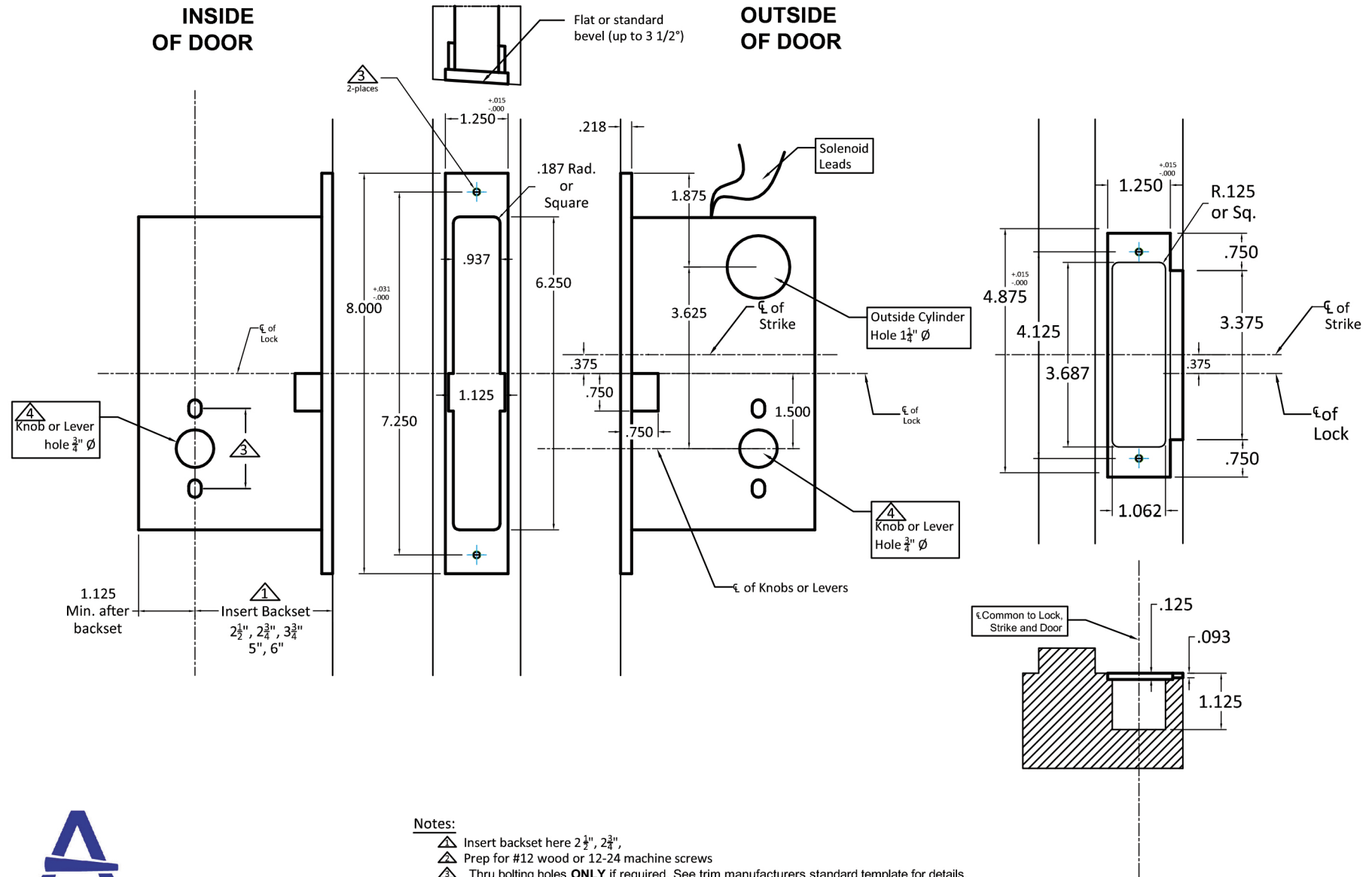


INSIDE OF DOOR

OUTSIDE OF DOOR



Notes:

- △ Insert backset here 2 1/2", 2 3/4",
 - △ Prep for #12 wood or 12-24 machine screws
 - △ Thru bolting holes **ONLY** if required. See trim manufacturers standard template for details.
- Accurate lock's accommodates 1 1/2" to 1 1/8" center to centers and up to 1/4" dia. post.
If there are any additional questions about the thru-bolting, please contact our office.
- △ Knob, thumbturn and ER holes may vary from different trim manufacturers. Please refer to their templates to confirm these dimensions.

Additional Notes:

- a) **Responsibility:** Door and frame manufacturers are responsible for providing adequate construction or re-inforcement for proper installation of hardware shown.
- b) Please contact us if a double lip strike is needed - for a proper template
- c) See catalog / spec sheets for additional lock details



Standard M9145E/M9156E/M9159E
Lever x Lever or Knob x Knob Template
All Backsets

T-ALH.M9145E/M9156E/M9159E.LL