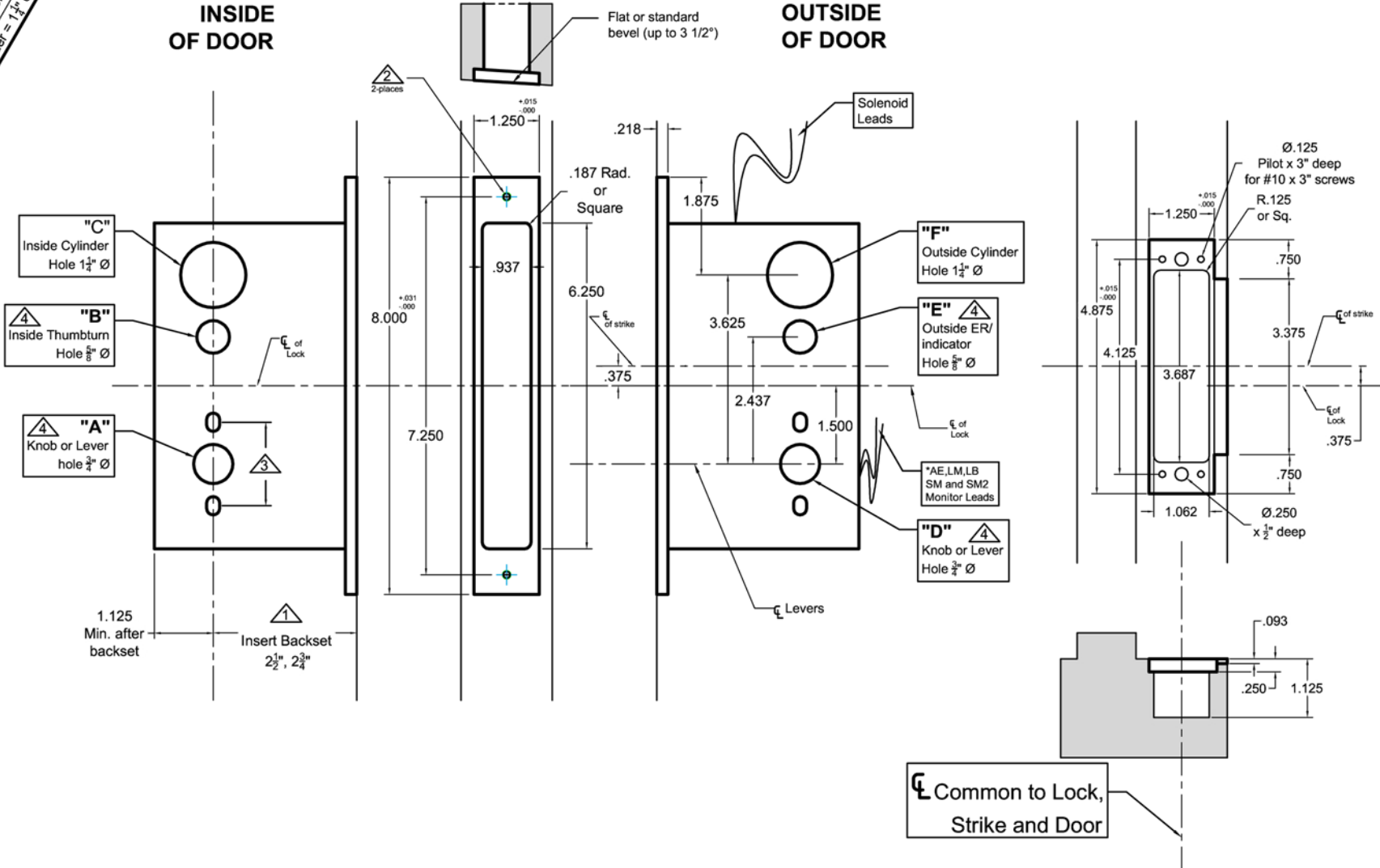


Lock Functions	Inside of door			Outside of door		
	"A" Knob/lever = 3/4" dia.	"B" Thumbturn = 5/8" dia.	"C" Cylinder = 1 3/4" dia.	"D" Knob/lever = 3/4" dia.	"E" ER or Indicator = 5/8" dia.	"F" Cylinder = 1 3/4" dia.
9101SEC						
9102SEC						
9103SEC	●					
9122SEC	●					
9124SEC	●					
9125SEC	●					
9134SEC	●					
9139SEC	●			○		
9142SEC	●					
9143SEC	●					
9143ESEC	●					
9144SEC	●					
9144ESEC	●					
9145SEC	●					
9145SSEC	●					
9146SEC	●					
9148SEC	●					
9149SEC	●					
9153SEC	●					
9149SEC	●					
9156SEC	●					
9158SEC	○					
9159SEC	○					
9160SEC	○					
9167SEC	●					
9169SEC	●					
9158ELSEC	●					
9158EUSEC	●					
9159ELSEC	●					
9159EUSEC	●					

● Required Holes  
○ Optional Holes

### INSIDE OF DOOR

### OUTSIDE OF DOOR



**Notes:**

- ▲ Insert backset here 2 1/2", 2 3/4"
- ▲ Prep for #12 wood or 12-24 machine screws
- ▲ Thru bolting holes **ONLY** if required. See trim manufacturers standard template for details. Accurate lock's accommodates 1 1/2" to 1 11/16" center to centers and up to 1/4" dia. post. If there are any additional questions about the thru-bolting, please contact our office.
- ▲ Knob, thumbturn and ER holes may vary from different trim manufacturers. Please refer to their templates to confirm these dimensions.

**Additional Notes:**

- a) **Responsibility:** Door and frame manufacturers are responsible for providing adequate construction or re-inforcement for proper installation of hardware shown.
- b) Please contact us if a double lip strike is needed - for a proper template
- c) See catalog / spec sheets for additional lock details



Standard 9100SEC High Security Lock Template - All Backsets

T-ALH.9100SEC