



ACCURATE

LOCK & HARDWARE

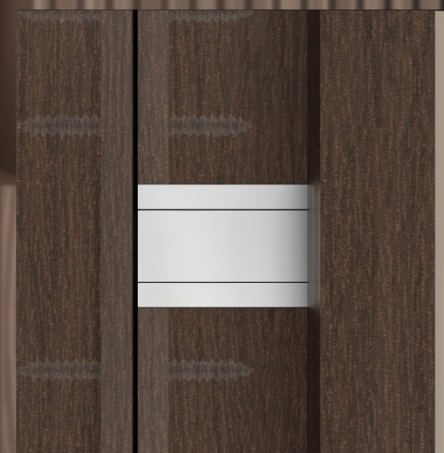
AMERICAN CRAFTED SINCE 1972

CONCEALED HARMON HINGES

RECESSED POCKET PIVOT HINGE WITH CONCEALED MOUNTING PLATES

CONCEALED HARMON HINGES

Harmon Hinges allow the door to align with millwork to essentially *disappear* into the wall when open. The Concealed Harmon goes one step further in hiding the mounting plates underneath a layer of millwork. Allowing the door to sit in a pocket of the wall creating a concealed panel, the Harmon Hinge does not project beyond the face of the door and creates a clean aesthetic. Available in stainless steel or solid brass in a variety of finishes.



DOOR OPEN



DOOR CLOSED

Harmon Hinges

Concealed vs Standard

CONCEALED HARMON HINGE



STANDARD HARMON HINGE

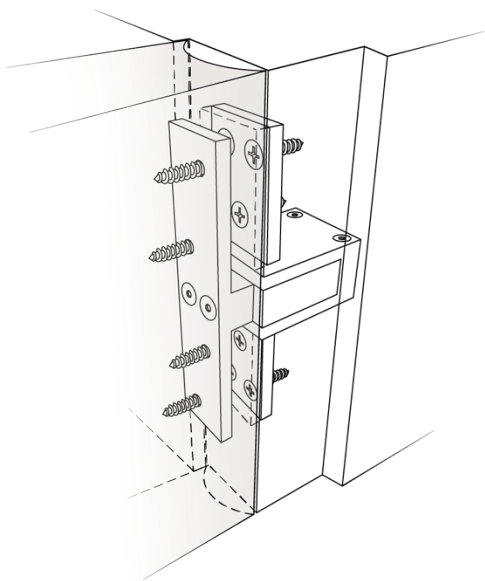


Concealed Harmon Hinges

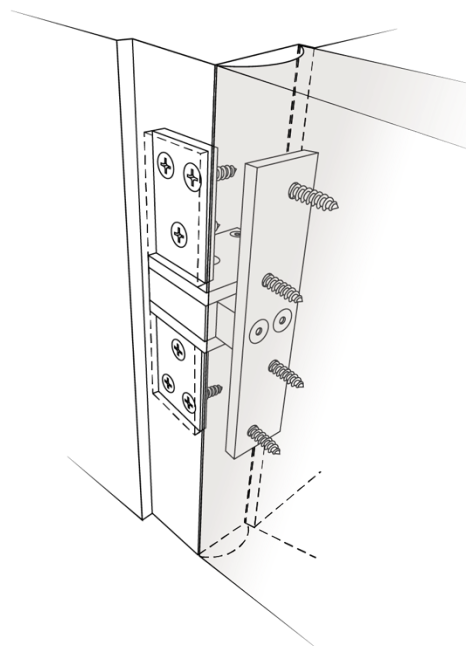
- Allows the door to neatly blend into the millwork to create a completely seamless opening
- The mounting plate for the jamb is recessed behind the millwork detail to be completely hidden and concealed
- Ideal for closets, hallways, libraries or bedrooms to create consistent transitions throughout the residence
- Features positive positioning stops at 0°- 90° standard, eliminating the need for a visible ball catch in the header
- Available for 1³/₈", 1³/₄", 2" and 2¹/₄" thick doors



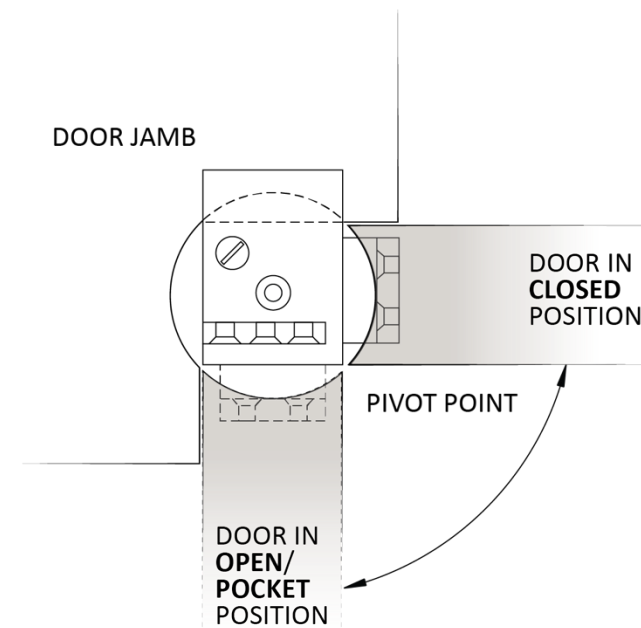
Concealed Harmon Hinge Configuration



DOOR IN **OPEN/POCKET** POSITION

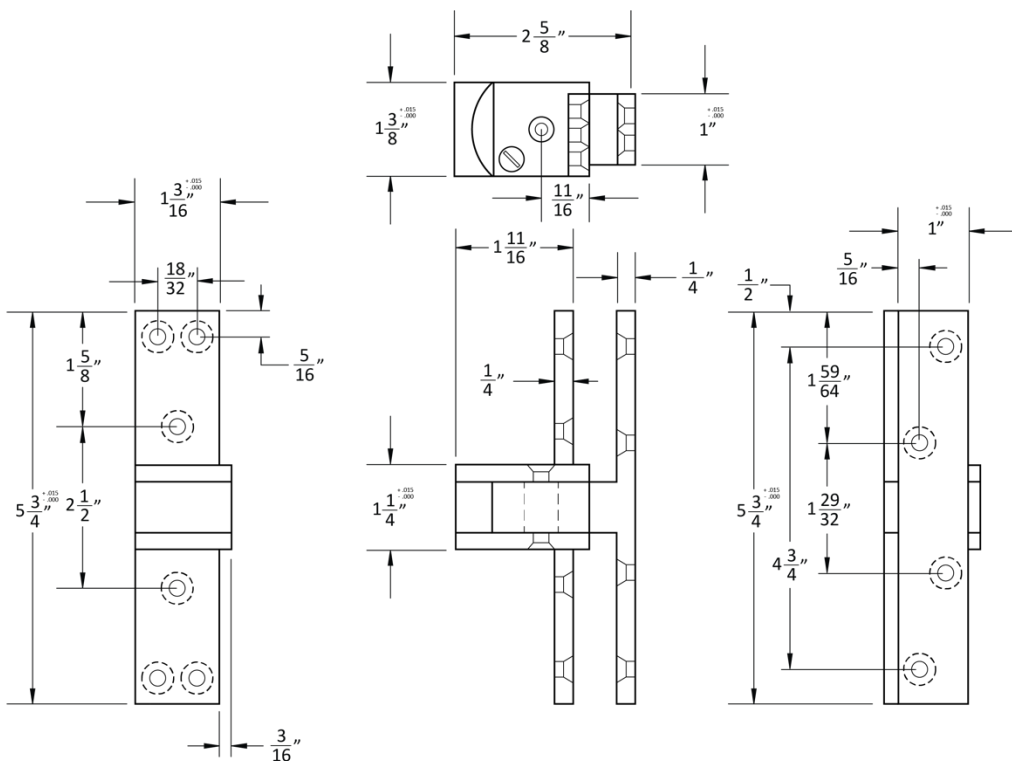


DOOR IN **CLOSED** POSITION

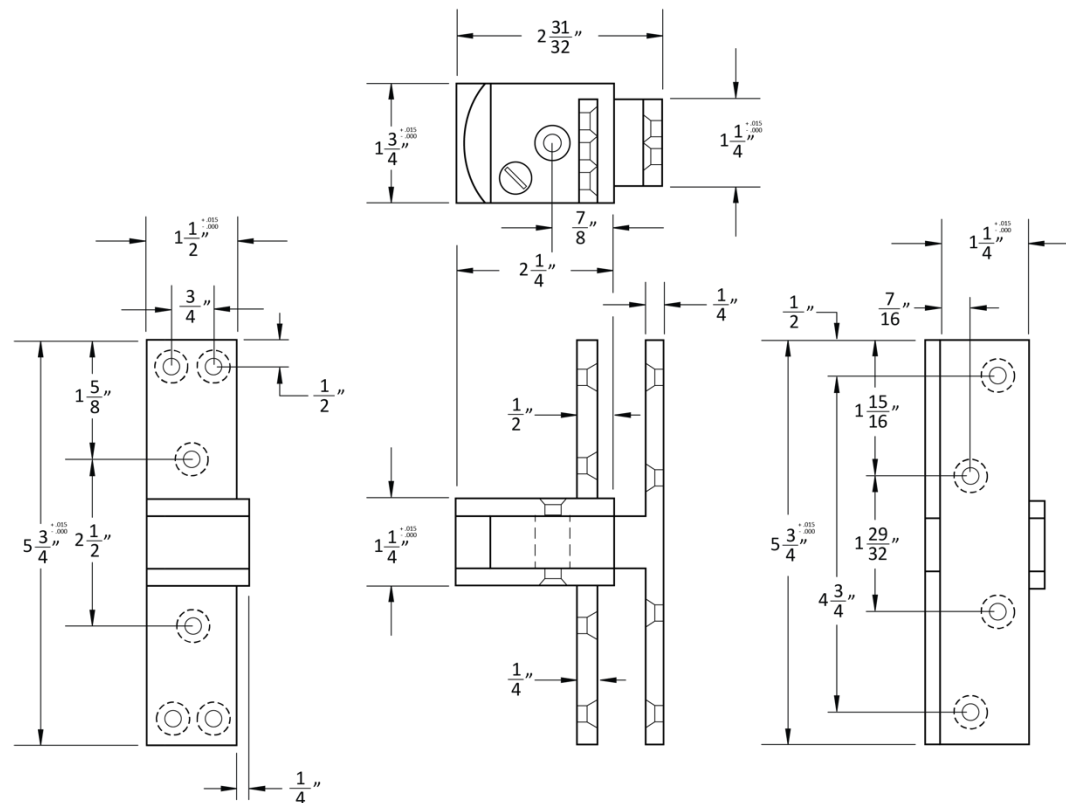


Concealed Harmon Hinge Specifications

1-3/8" THICK DOOR

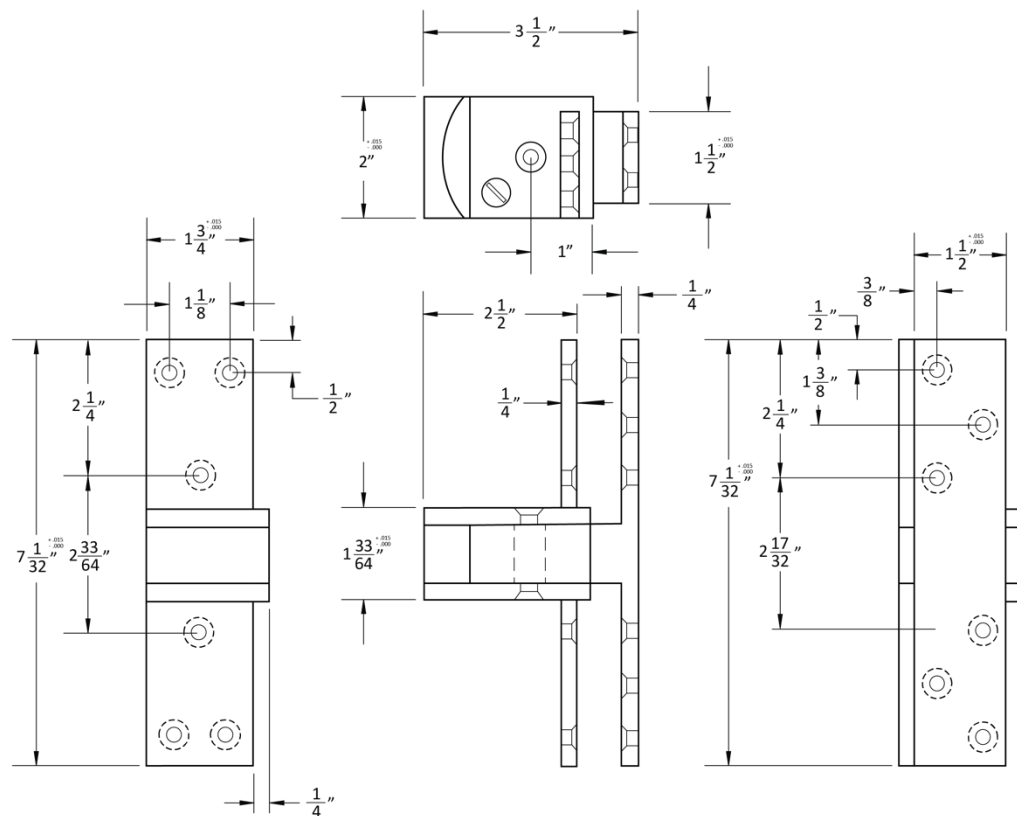


1-3/4" THICK DOOR

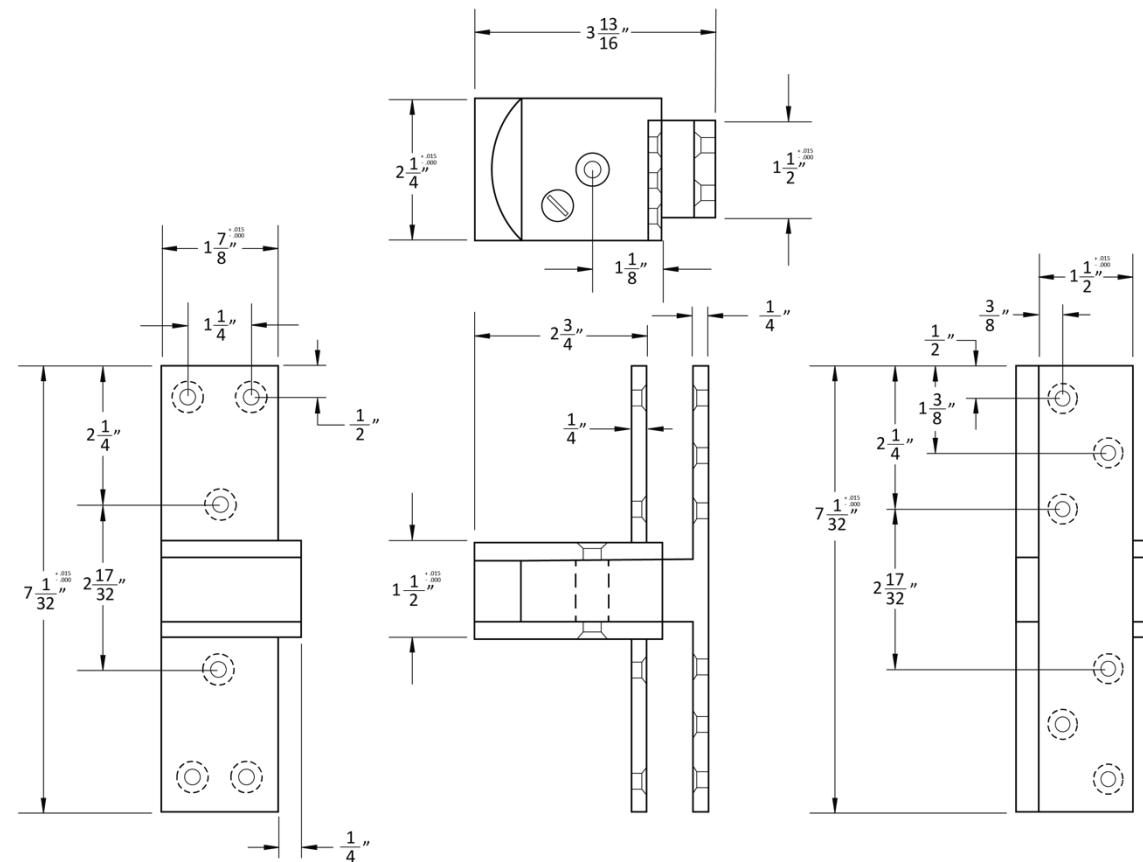


Concealed Harmon Hinge Specifications

2" THICK DOOR



2-1/4" THICK DOOR



Harmon Hinge Spacing Guidelines

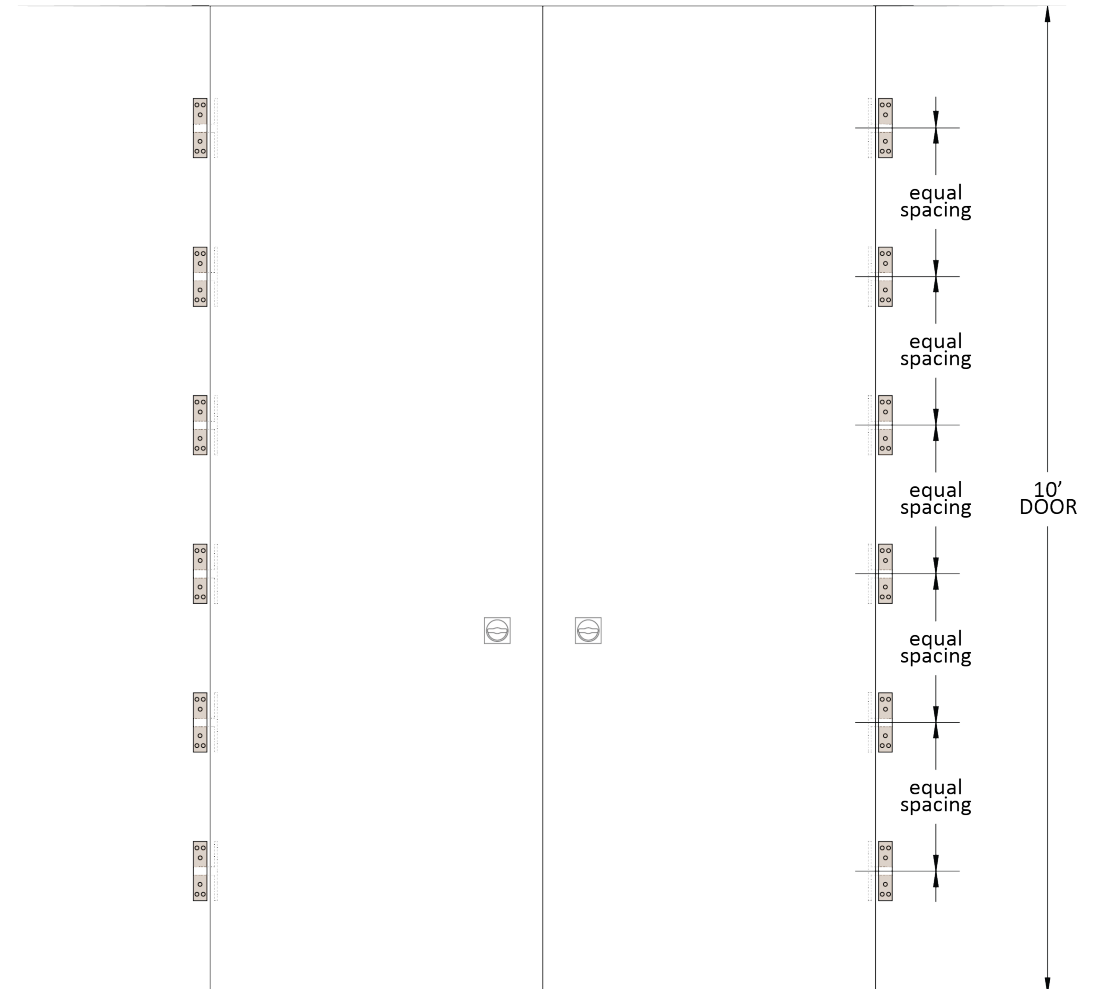
DOOR HEIGHT GUIDELINES

Common practice is to locate top and bottom hinges as shown. General guidelines are to use two Harmon Hinges for doors up to 5' tall, adding one hinge for each additional 2-1/2' of door height. Take into consideration door weight and frequency of use. Use the below table as a guide.

Door Height	Number of Hinges*
Up to 5'	2
7-1/2'	3-4
10'	5-6
12-1/2'	6-7
15'	7-8

**Use higher number of hinges for doors greater than 2" thick or doors with applied features (mirrors, tile/marble or other architectural design elements).*

EXAMPLE OF 10' DOOR



Average Door Weights of Architectural Grade Doors

Door Type	Door Thickness		
	1-3/8"	1-3/4"	2"
	lbs/ft		
Hollow Metal	4.00	5.00	6.50
Hollow Core	2.00	2.50	
Solid Core	3.50	4.50	5.25
Mineral Core	3.50	4.00	
Pine	3.00	3.50	4.00
Oak	5.00	7.00	8.00
Ash	4.00	5.00	6.00
Fir	3.00	3.50	4.00
Birch	4.25	5.50	6.25
Mahogany	3.50	4.50	5.25

Average Door Weights of Architectural Grade Doors

Type	Height	1-3/4" Thick Door		
		Door Width		
		32"	36"	48"
		Door Weight (lbs)		
Pine	80"	62	70	93
	84"	65	74	98
	96"	75	84	112
Oak	80"	124	140	187
	84"	131	147	196
	96"	149	168	224
Ash	80"	89	100	133
	84"	93	105	140
	96"	107	120	160
Fir	80"	62	70	93
	84"	65	74	98
	96"	75	84	112

Type	Height	1-3/4" Thick Door		
		Door Width		
		32"	36"	48"
		Door Weight (lbs)		
Birch	80"	98	110	147
	84"	103	116	154
	96"	117	132	176
Mahogany	80"	80	90	120
	84"	84	95	126
	96"	96	108	144
Solid Core	80"	80	90	120
	84"	84	95	126
	96"	96	108	144

HOW TO SPECIFY

FINISHES

STANDARD BASE METAL: BRASS

GROUP 1: US4, US4NL, US26D

GROUP 2: US3, US3NL, US26, US32*, US9*, US10*, US10B, US14, US15, US19

GROUP 3: BN, BB, TN, TB, DURO, ESN, US15A, US5

SPECIAL BASE METAL: US32D* OPTIONAL UPGRADE TO STAINLESS STEEL

To view example of finishes visit: [Accurate Finishes](#).

*OPTIONAL SATIN STAINLESS STEEL

- #304 Grade Satin Stainless Steel
- Provides a durable, everlasting true metal finish
- Heavier duty from being made from a stronger metal
- Scratches and imperfections post-installation are easily corrected
- When Satin Stainless Steel (US32D) is not specified, brass is the base metal furnished, finished as required

CHH.FINISH.DOORTHICKNESS

EXAMPLES

Concealed Harmon Hinge | Satin Stainless Steel

E.g.: CHH.US32D.134

Concealed Harmon Hinge | Oil Rubbed Bronze

E.g.: CHH.US10B.2

Concealed Harmon Hinge | Polished Nickel

E.g.: CHH.US14.214

**ACCURATE LOCK & HARDWARE
MANUFACTURERS OF LOCKS AND
CUSTOM ARCHITECTURAL HARDWARE**

1 Annie Place | Stamford, CT 06902

P: 203.348.8865

F: 203.348.5234

E: sales@accuratelockandhardware.com

www.accuratelockandhardware.com

**AMERICAN CRAFTED
— SINCE 1972 —**