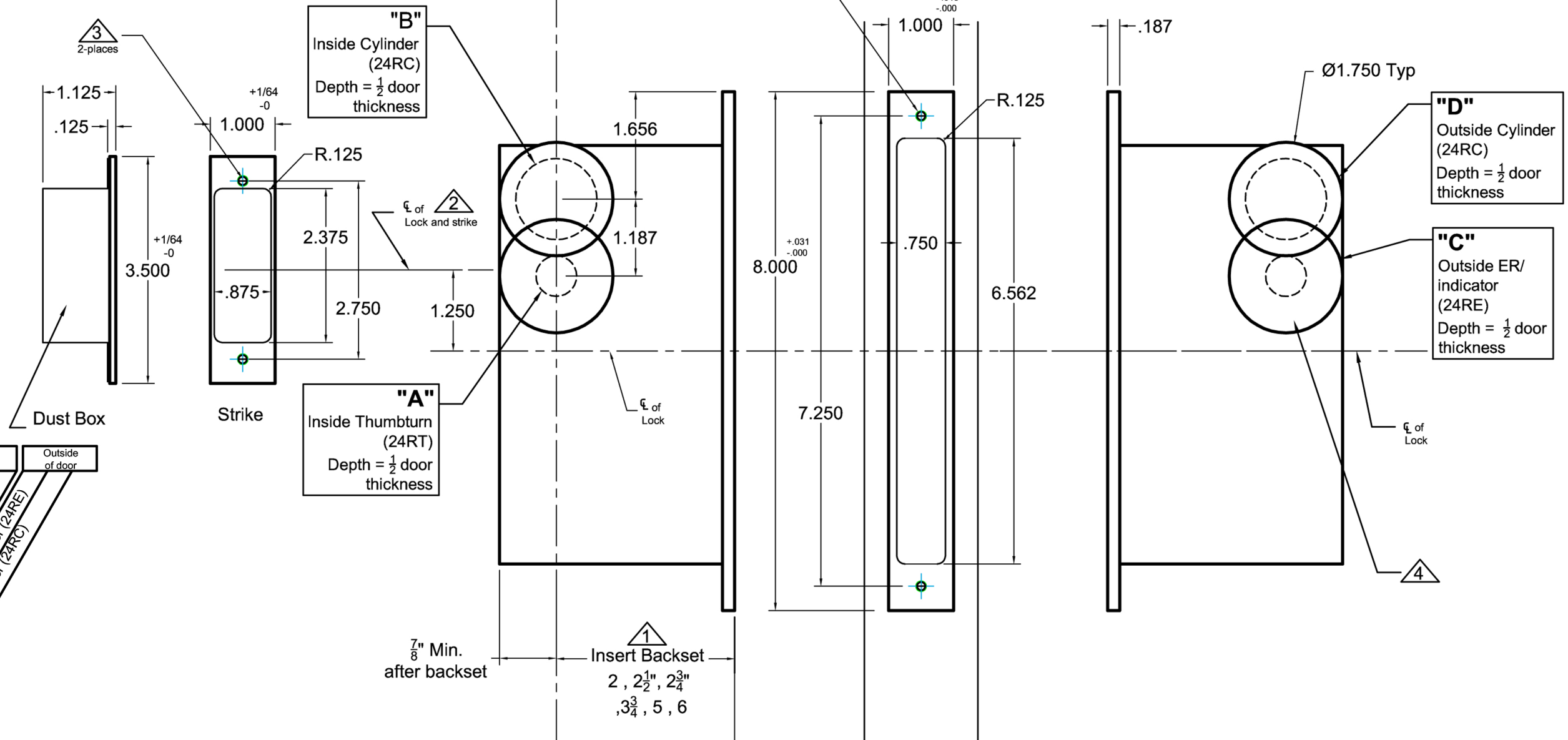


INSIDE OF DOOR

OUTSIDE OF DOOR



Notes:

- △ Insert backset here 2", 2 $\frac{1}{2}$ ", 2 $\frac{3}{4}$ ", 3 $\frac{3}{4}$ ", 5", 6"
- △ Strike is 1 $\frac{1}{4}$ " above centerline of lock
- △ Prep for #8 wood or 8-32 machine screws
- △ After the lock is installed and works properly. Pre-drill screw holes for the flush pulls. Then mount the flush pulls with the provided screws.

Additional Notes:

- a) **Responsibility:** Door and frame manufacturers are responsible for providing adequate construction or re-inforcement for proper installation of hardware shown.
- b) See catalog / spec sheets and template #T-ALH.2002CPDL.LO for additional lock details

ACCURATE
LOCK & HARDWARE
AMERICAN CRAFTED SINCE 1972

Standard 2002CPDL- 24RT, 24RC and
24RE Flush Pulls- All Backsets

T-ALH.2002CPDL.24R