



ACCURATE

LOCK & HARDWARE

AMERICAN CRAFTED SINCE 1972

SL9100ADA SELF-LATCHING SLIDING/POCKET DOOR LOCKS

SL9100ADA SELF-LATCHING SLIDING/POCKET DOOR LOCKS

DETAILS + OPTIONS

Latch bolt held back and released by pressing of a button or by sliding door closed against jamb: *Door self latches whether latch is projected or retracted. When door hits the frame, latch projects and latches.*

Latch bolt functions like an edge pull when projected.

Deadbolt available for locking/extra security (see function list).

Single action egress allowing unlocking and sliding the door open in one operation.

For use with Accurate's SLFT flush pulls (for true pocket door applications) or Accurate's levers. Lock can be used with other manufacturers' sectional levers that can be installed vertically.

2 ½" or 2 ¾" backset standard, other backsets available as a special order.

Available with 1" front (for 1 3/8" thick doors, specify SL9100xx) – sliding door applications only (not for pocket doors).





SL9100ADA SELF-LATCHING FUNCTIONS

**SL9122ADA
STORE DOOR LOCK**

Latch bolt by lever either side.

Deadbolt by key either side.

No emergency egress.

**SL9124ADA
DORMITORY**

Latch bolt by lever either side.

Deadbolt by key outside, thumb turn inside.

Turn of inside handle retracts latch and deadbolt simultaneously, automatically unlocking outside handle.

**SL9125ADA
PASSAGE**

Latch bolt by handle either side.

**SL9134ADA
HOTEL/MOTEL**

Latch bolt by handle inside and Guest/Master key outside.

Outside handle always RIGID.

Deadbolt by turn piece inside.

Turn of inside handle retracts latch and deadbolt simultaneously.

**SL9139ADA
PRIVACY**

Latch bolt by handle either side.

Deadbolt by thumb turn and optional emergency coin turn outside.

Turn of inside handle retracts latch and deadbolt simultaneously automatically unlocking outside handle.

**SL9139ADA-i
PRIVACY x INDICATOR**

Latch bolt by lever either side.

Deadbolt by thumb turn and emergency coin turn with indicator outside.

Turn of inside lever retracts latch and deadbolt simultaneously, automatically unlocking outside lever.

SL9100ADA SELF-LATCHING FUNCTIONS

SL9145ADA CLASSROOM

Latch bolt by key outside and handle either side unless outside handle is locked by key.

SL9153ADA OFFICE

Latch bolt by key outside and handle either side unless outside lever is locked by thumb turn or key.

Key or thumb turn locks or unlocks outside handle.

SL9159ADA STOREROOM

Latch by handle inside and key outside.

Outside handle always rigid.

LEVER OPTIONS

18L LEVER



19L LEVER



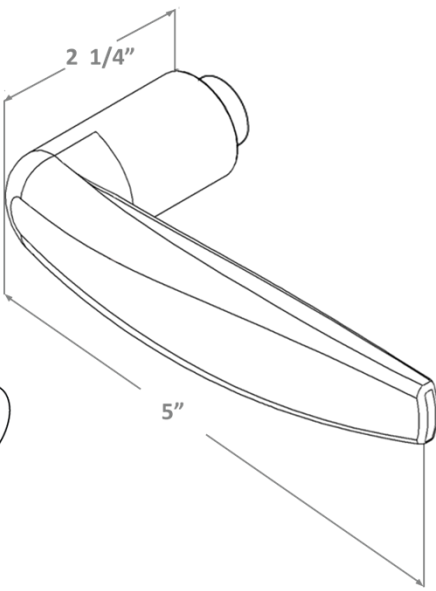
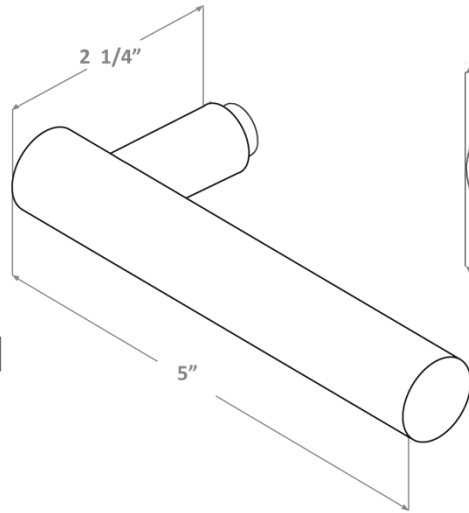
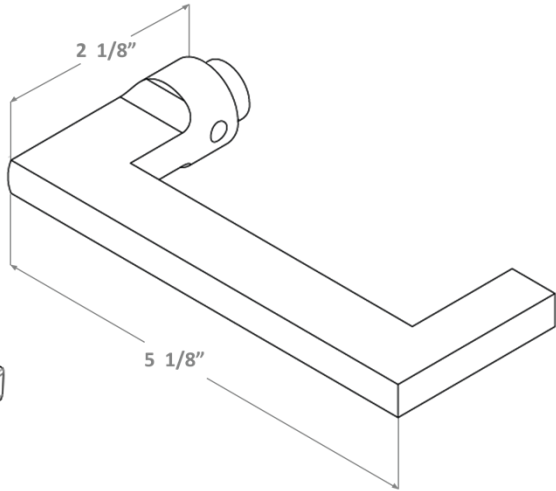
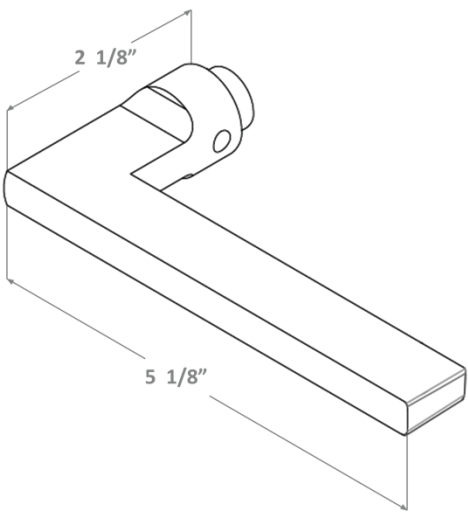
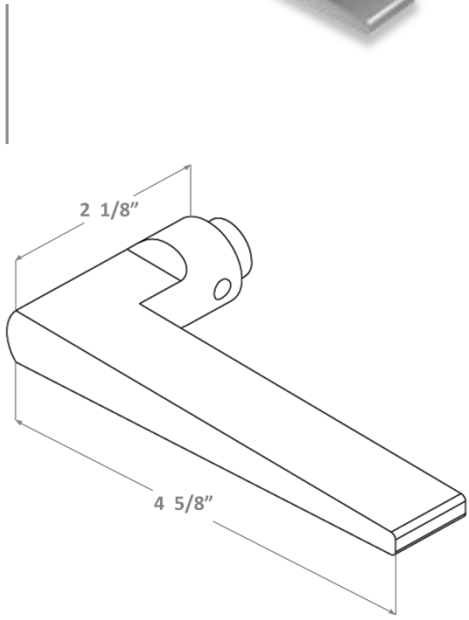
20L LEVER



72L LEVER



29L LEVER



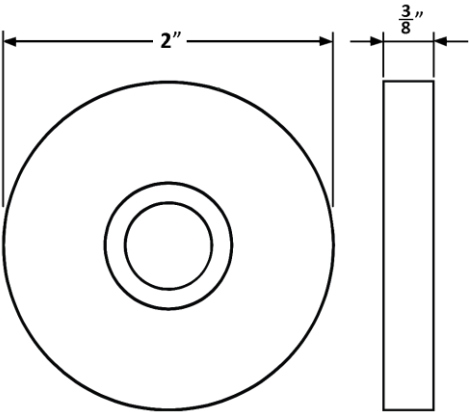
ACCURATE ROSE OPTIONS

1R ROSE

Front



Side



2R ROSE

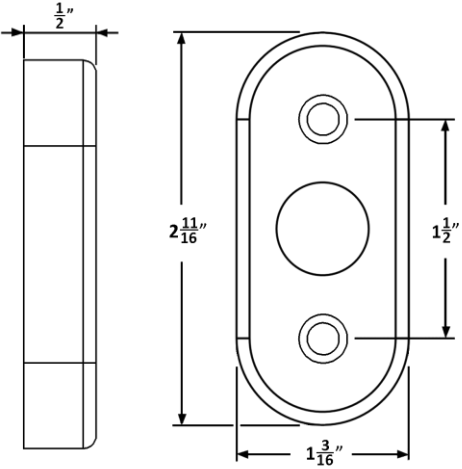
Side



Inside



Outside



4R ROSE

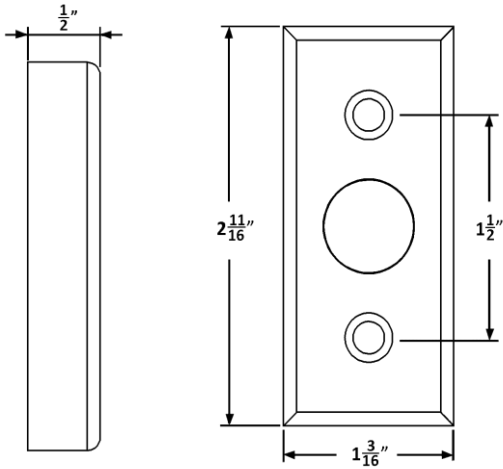
Side



Inside



Outside



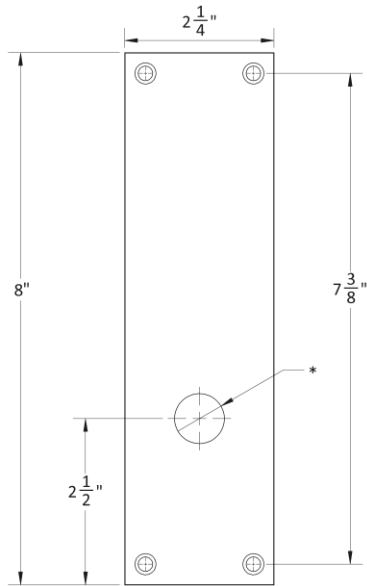
ACCURATE ESCUTCHEON OPTIONS

COMBINATIONS DEPEND ON FUNCTION

7

1E-B

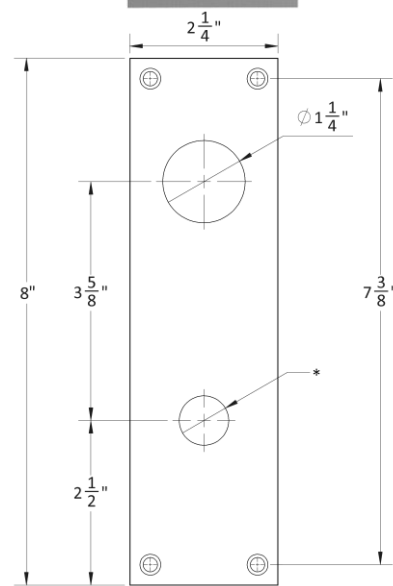
Blank



* Dimensions may vary depending on trim

1E-C

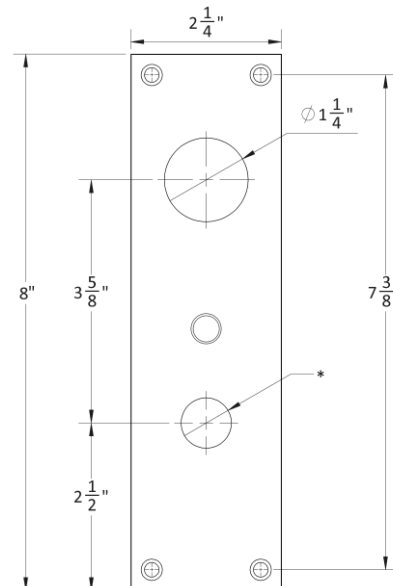
Cylinder Cutout



* Dimensions may vary depending on trim

1E-Ci

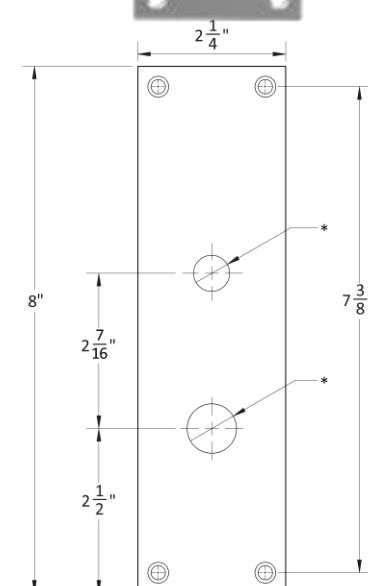
Cylinder Cutout with Indicator



* Dimensions may vary depending on trim

1E-ADA

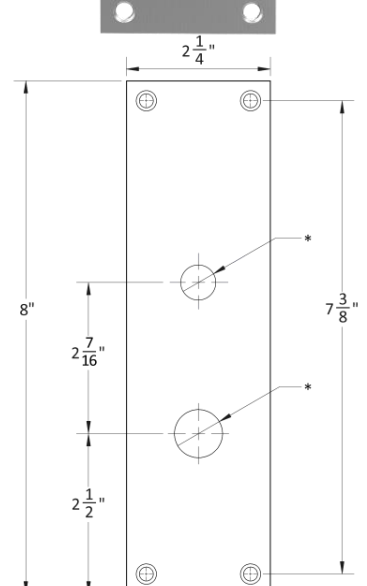
Thumb Turn



* Dimensions may vary depending on trim

1E-E

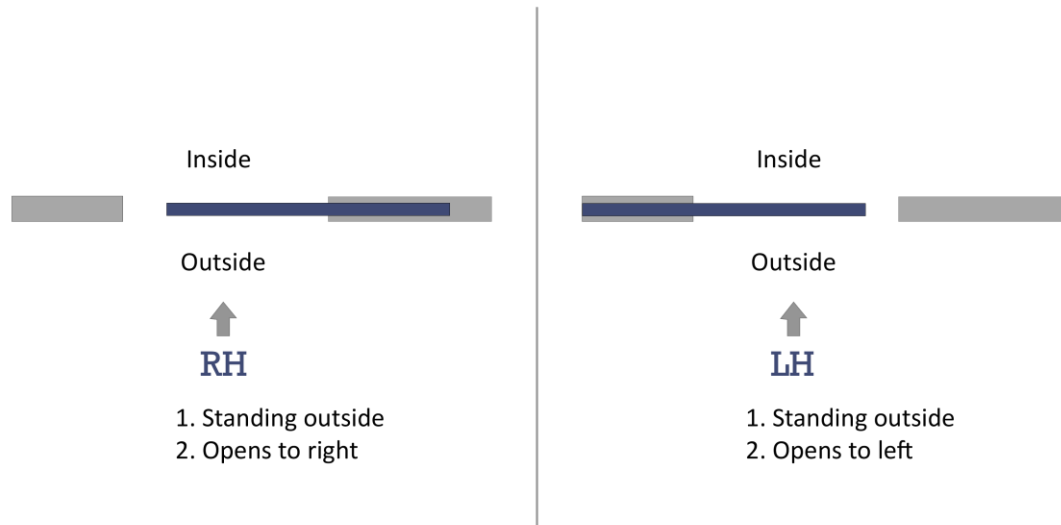
Emergency Release



* Dimensions may vary depending on trim

HOW TO SPECIFY

HANDING



FINISHES

GROUP 1: US4, US4NL, US32D*, US26D

GROUP 2: US3, US3NL, U26, US32*, US9*, US10*, US10B, US14, US15, US19

GROUP 3: BN, BB, TN, TB, DURO, ESN, US15A, US5

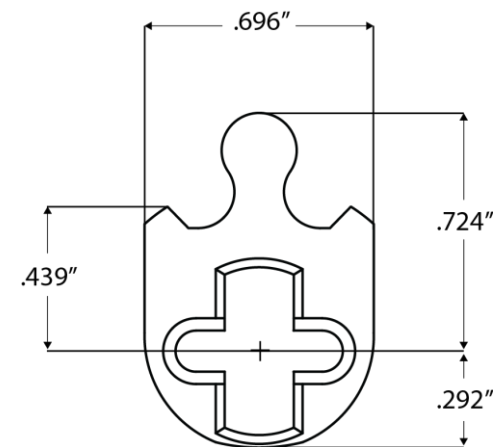
*Trim options (including Accurate levers) may not be available in US32D, US32, US9, or US10 finish. Please call for assistance.

To view example of finishes visit: [Accurate finishes.](#)

CYLINDERS & KEYING

SL9100 Locks accept any standard American mortise cylinder. For details on required cams and compatibility with other manufacturers' cylinders, please visit:

[Accurate Support](#)



HOW TO SPECIFY



EXAMPLES

Passage, for use with FSB levers
E.g. SL9125.212.FSB 8mm.US32D.RH.134DT.SD

Privacy, for use with Accurate’s 72L/1E levers and
escutcheons on
1 3/8” thick doors
E.g. SL9039.234.72L/1E.US32D.LH.138DT.SD

CUSTOM OPTIONS AVAILABLE

- Set up for levers by other manufacturers
- Other backsets, door thicknesses, and custom finishes
- Access control applications

ACCURATE LOCK & HARDWARE
MANUFACTURERS OF CUSTOM LOCKS
AND ARCHITECTURAL HARDWARE

1 Annie Place | Stamford, CT 06902

P: 203.348.8865

F: 203.348.5234

E: sales@accuratelockandhardware.com

www.accuratelockandhardware.com

AMERICAN CRAFTED
— SINCE 1972 —