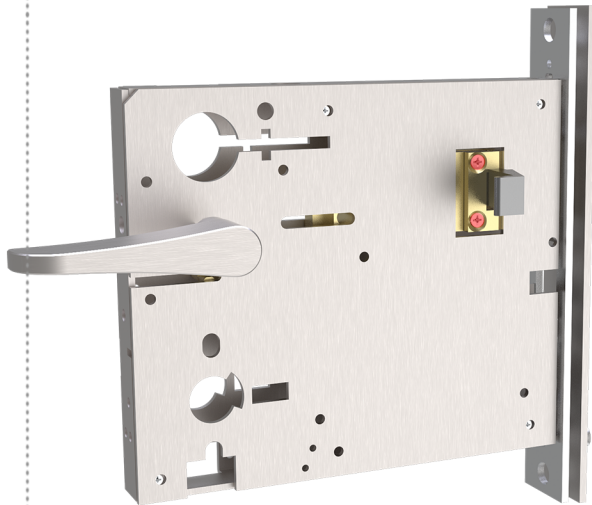


**9100BDL Barn Door Lock
Installation Instructions**

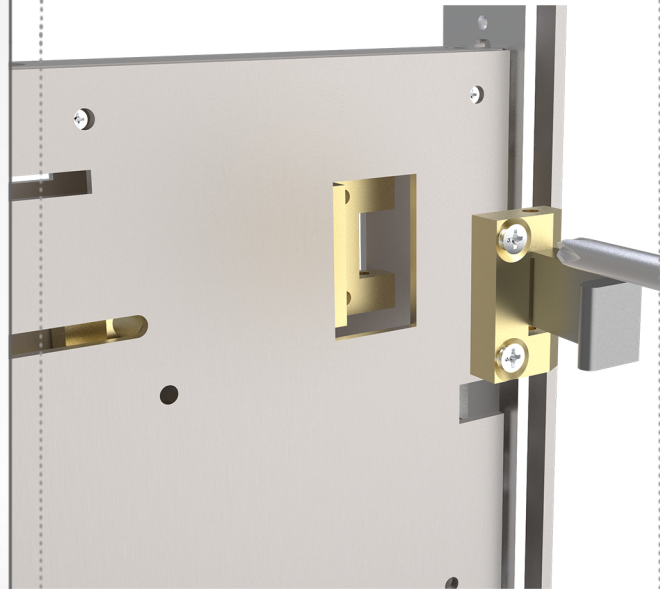
1



Expose Screws

- Rotate thumb turn 90 degrees to project bolt and expose the two bolt screws

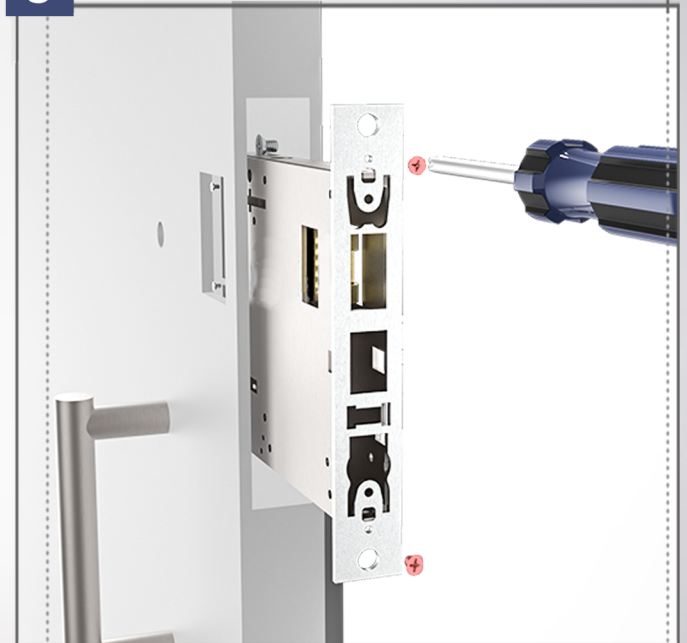
2



Remove Bolt from Lock Body

- Extend the bolt and loosen screws without removing them and remove bolt assembly from the lock

3

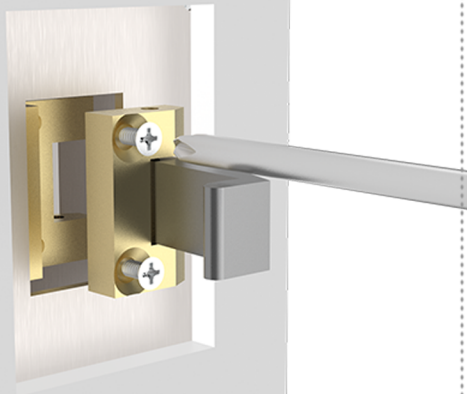


Insert Lock into Door

- Insert lock into door
- Loosely insert mounting screws

**9100BDL Barn Door Lock
Installation Instructions**

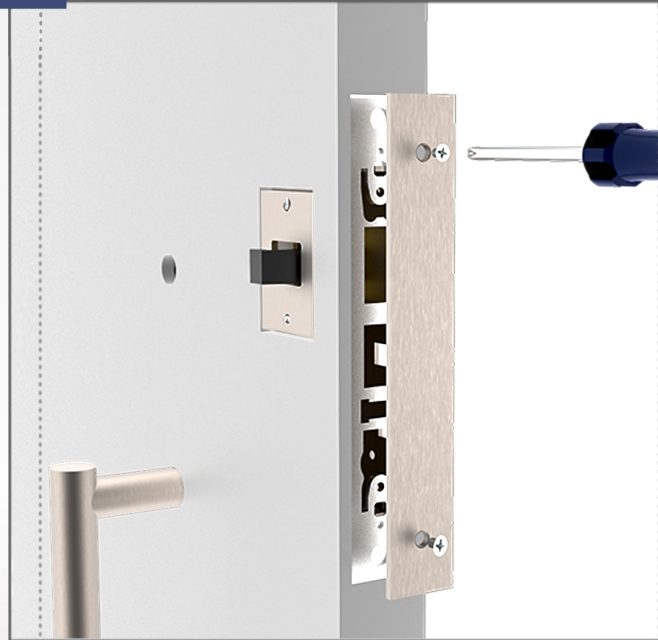
4



Reattach Bolt

- Slightly rotate loose thumb turn to make lock body screws visible
- Reinstall bolt assembly by aligning screw holes
- Tighten screws
- Use thumb turn to fit bolt assembly back in

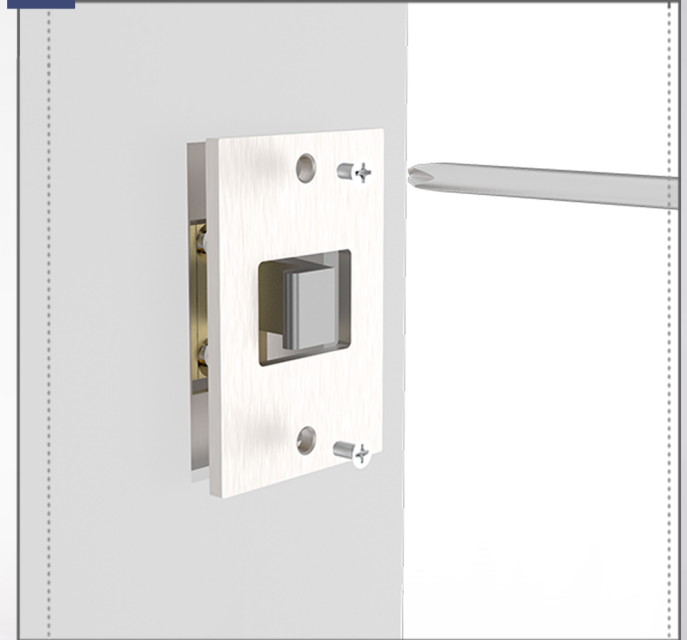
5



Install Armor Front

- Secure lock in door by tightening screws into door
- Install armor front onto basefront

6



Mount Cuff

- Mount the bolt cuff aligning per template
- Install trim accordingly

