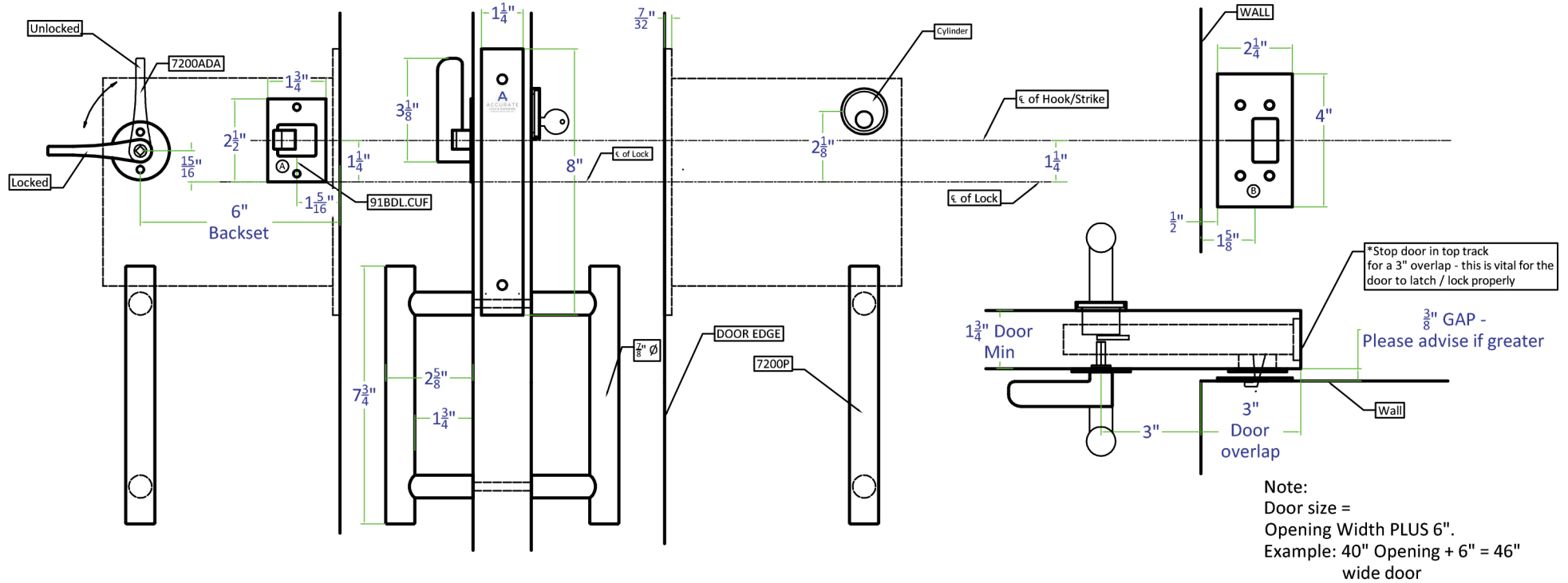


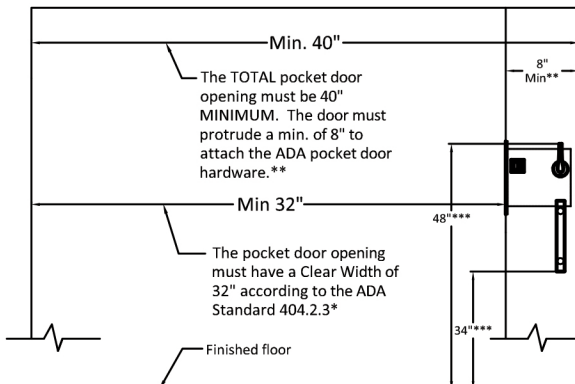
Rev.	Date	Description
A	11-12-18	Updated cuff / hook design
B	11-12-18	Updated strike size



Note:
 Door size =
 Opening Width PLUS 6".
 Example: 40" Opening + 6" = 46"
 wide door



9100BDL-3 x 6" BS x Cylinder x
 7200ADA x 7200P Pulls (ADA Spec)



* The ADA Standard 404.2.3* is from the Dept of Justice ADA Publication of Sept 15, 2010. Accurate Lock and Hardware Co. LLC recommends verification of all State and Federal standards applicable for a particular project.

** The total opening has to be 8" (min.) greater than the Federal "Clear Width" dimension of 32" to work properly

*** The Bottom of the 7200P Pulls must be installed w/ 34" from the finished floor. This will give 48" from the finished floor to top of 7200ADA handle, thus meeting Code 404.2.7.

Made in USA

All Accurate products meet the requirements of the "Buy American" provisions included in the "American Recovery and Reinvestment Act" (ARRA Title XVI, Section 1605)

Parts List			
QTY	Part Number	Finish	Description
1	9100BDL		Sliding door lock 6" BS
1	7200ER		Emergency coin release
1	Cylinder		Cylinder by Accurate or Others
1	91BDL.CUF		Barn door cuff
1	7200P		Back to Back Pulls
1	91BDL.STK		9100BDL Strike Plate
spec no. 9100BDL-3-ADA			
			REV A