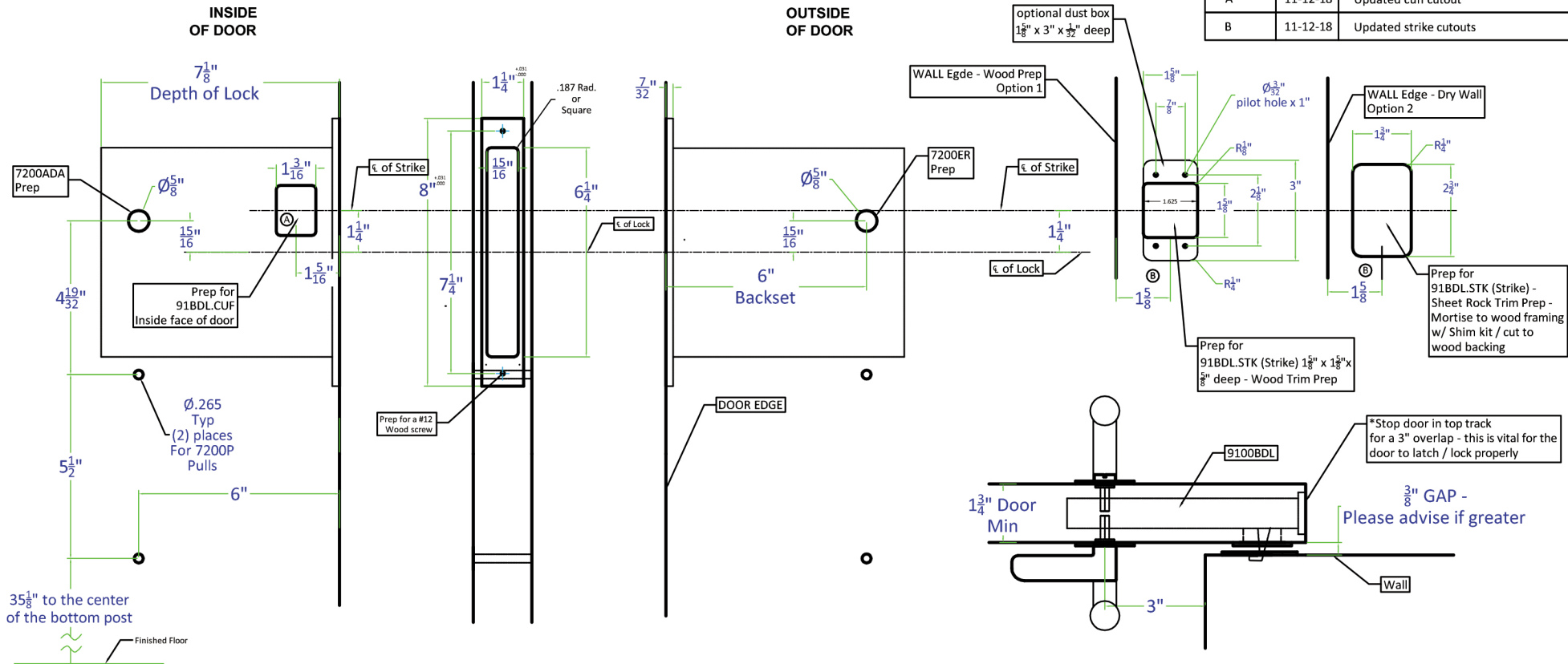
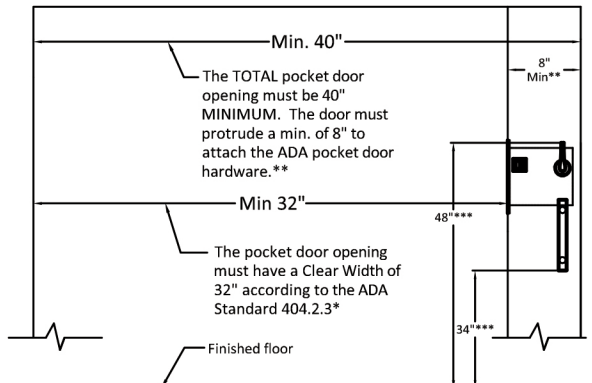


Rev.	Date	Description
A	11-12-18	Updated cuff cutout
B	11-12-18	Updated strike cutouts



9100BDL-5 (-5i) x 6" BS x 7200ER x 7200ADA x 7200P Pulls (ADA Spec)



* The ADA Standard 404.2.3* is from the Dept of Justice ADA Publication of Sept 15, 2010. Accurate Lock and Hardware Co. LLC recommends verification of all State and Federal standards applicable for a particular project.

** The total opening has to be 8" (min.) greater than the Federal "Clear Width" dimension of 32" to work properly

*** The Bottom of the 7200P Pulls must be installed w/ 34" from the finished floor. This will give 48" from the finished floor to top of 7200ADA handle, thus meeting Code 404.2.7.

Made in USA

All Accurate products meet the requirements of the "Buy American" provisions included in the "American Recovery and Reinvestment Act" (ARRA Title XVI, Section 1605)

T-ALH.9100BDL-5-ADA	Rev A
----------------------------	--------------