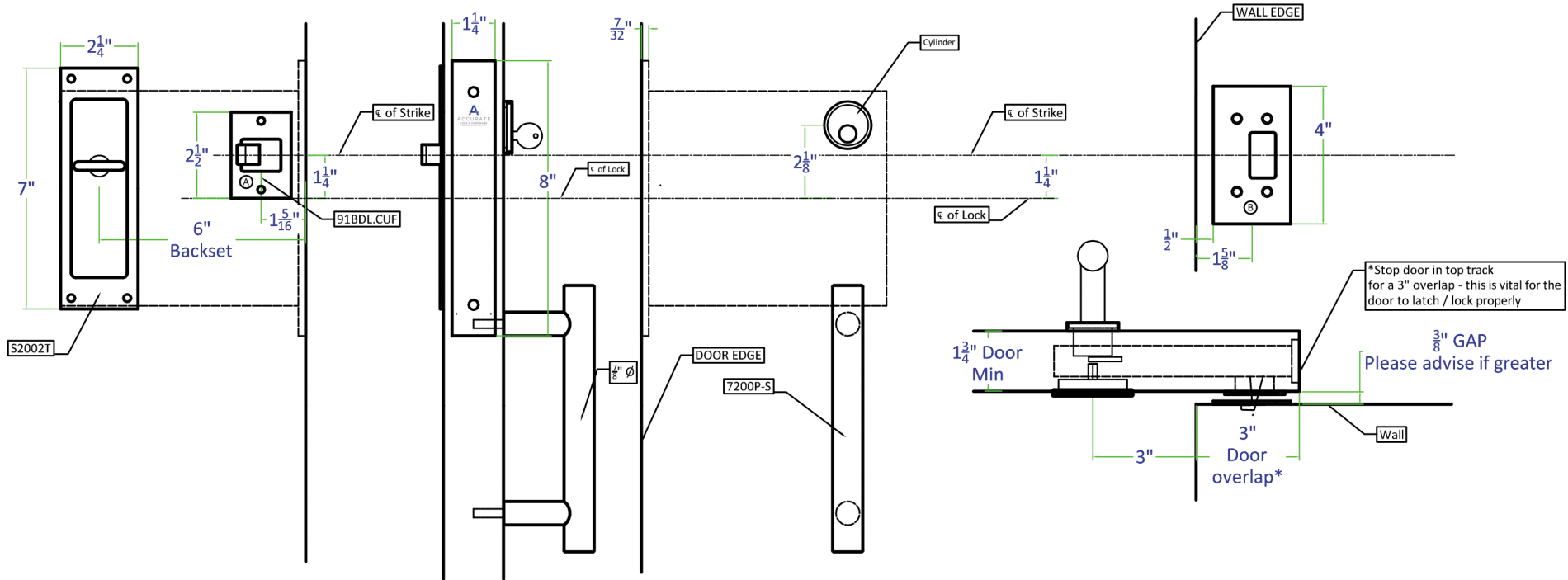


Rev.	Date	Description
A	11-12-18	Updated cuff / hook design
B	11-12-18	Updated strike size



9100BDL-3 x 6" BS x Cylinder x
7200P-S Pull x S2002T

Made in USA

All Accurate products meet the requirements of the "Buy American" provisions included in the "American Recovery and Reinvestment Act" (ARRA Title XVI, Section 1605)

QTY	Cylinder		Cylinder by Accurate or Others
	Part Number	Finish	Description
1	9100BDL		Sliding door lock 6" BS
1	Cylinder		Cylinder by Accurate or Others
1	S2002T		Flush T-turn / flush pull
1	91BDL.CUF		Barn door cuff
1	7200P-S		Surface Mounted Pull
1	91BDL.STK		9100BDL Strike Plate
spec no. 9100BDL-3 x 7200P.S2002T			
			REV A