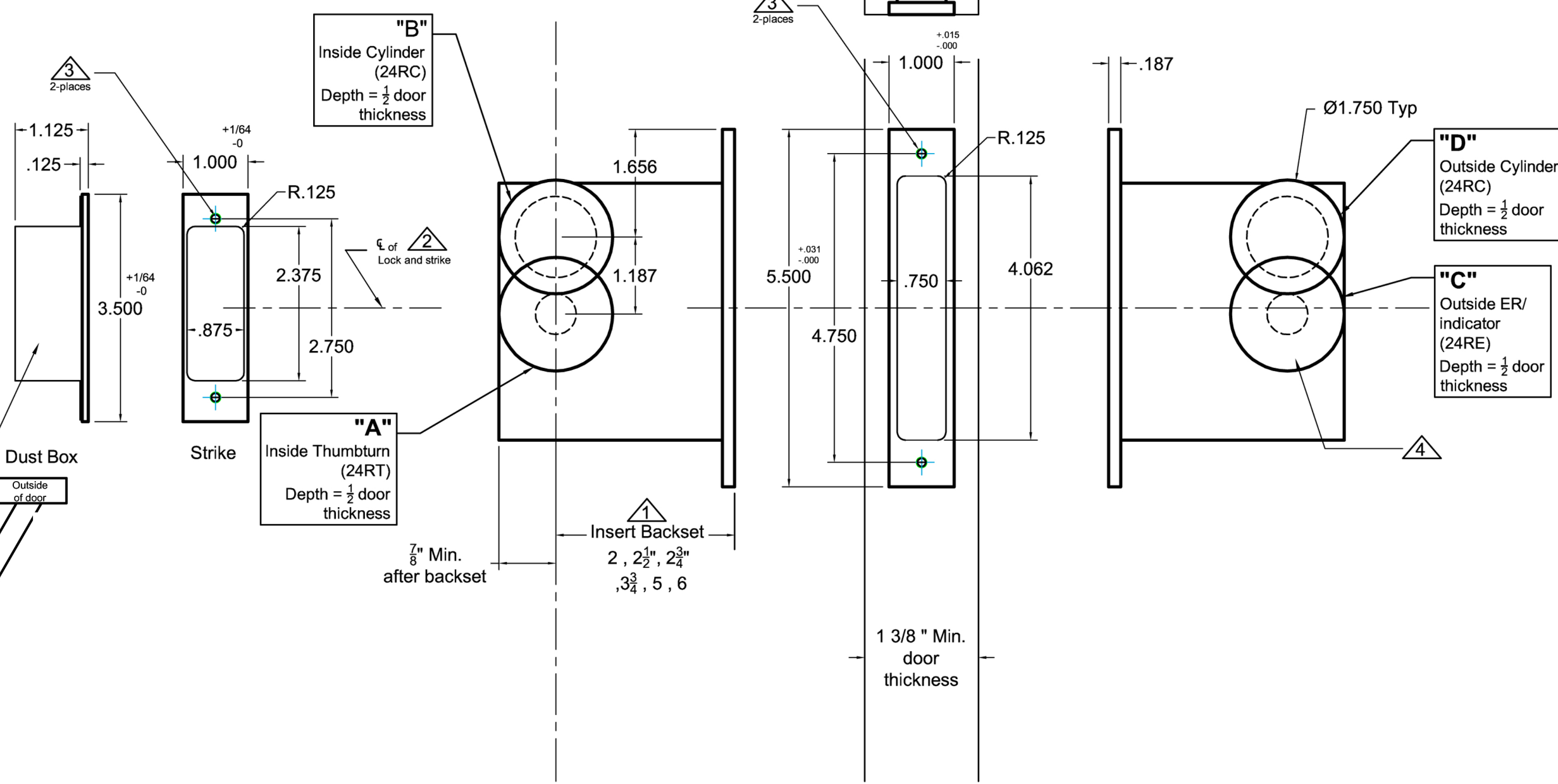


INSIDE OF DOOR

OUTSIDE OF DOOR



Lock Functions	"A" thumbturn (24RT)	"B" cylinder (24RC)	"C" ER or indicator (24RE)	"D" cylinder (24RC)
2001SDL-1				●
2001SDL-2	●			●
2001SDL-3	●			●
2001SDL-4	●			●
2001SDL-5	●	●		●

● Required Holes



- Notes:**
- ① Insert backset here 2", 2 1/2", 2 3/4", 3 3/4", 5", 6"
 - ② Centerline of strike and front are the same.
 - ③ Prep for #8 wood or 8-32 machine screws .
 - ④ After the lock is installed and works properly. Pre-drill screw holes for the flush pulls. Then mount the flush pulls with the provided screws.

- Additional Notes:**
- a) **Responsibility:** Door and frame manufacturers are responsible for providing adequate construction or re-inforcement for proper installation of hardware shown.
 - b) See catalog / spec sheets and template #T-ALH.2001SDL.LO for additional lock details

Standard 2001SDL- 24RT, 24RC and 24RE Flush Pulls- All Backsets

T-ALH.2001SDL.24R