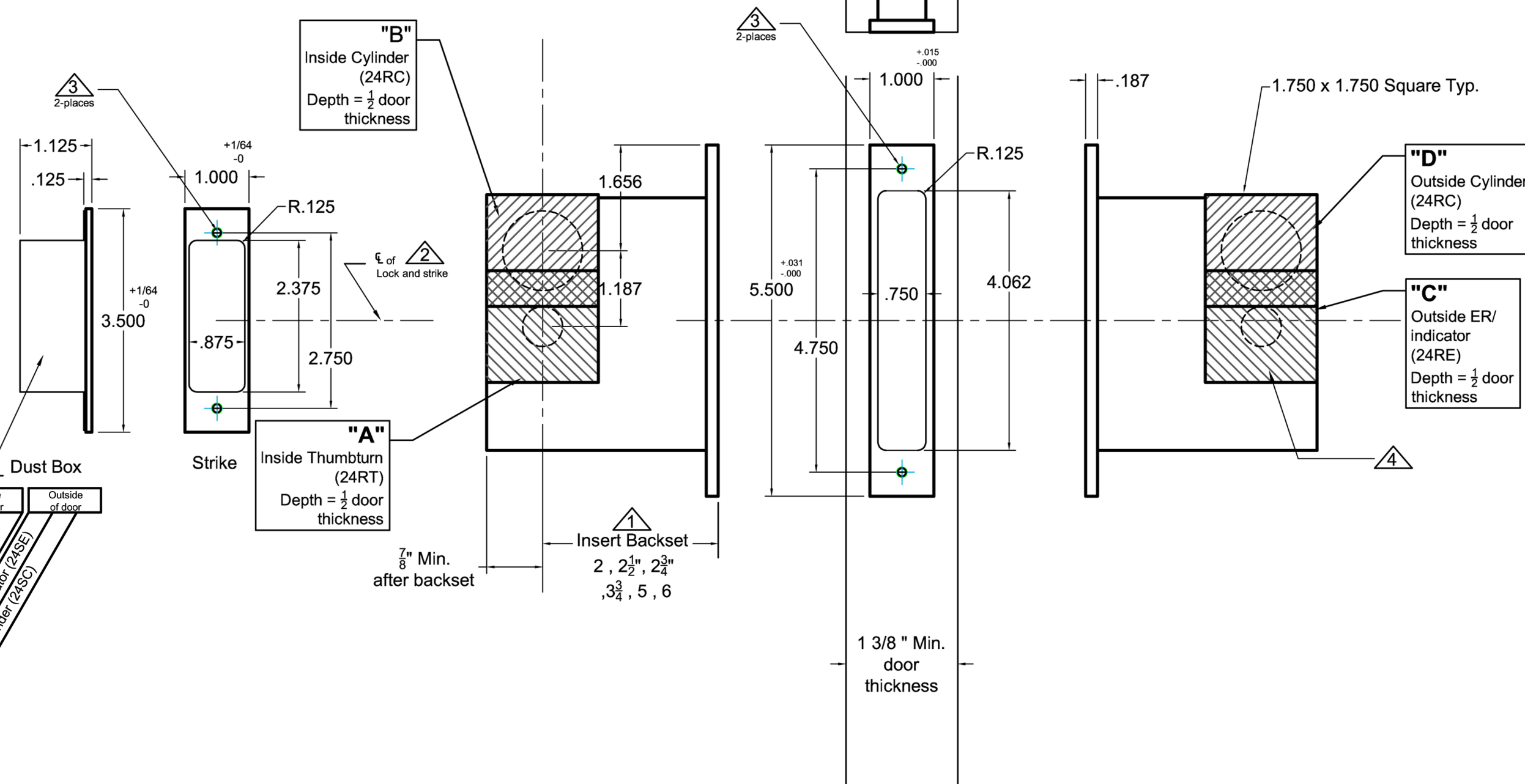


INSIDE OF DOOR

OUTSIDE OF DOOR



Lock Functions	Inside of door		Outside of door	
	"A" thumbturn (24ST)	"B" cylinder (24SC)	"C" ER or indicator (24SE)	"D" cylinder (24SC)
2001SDL-1				
2001SDL-2	●			
2001SDL-3	●			
2001SDL-4	●			
2001SDL-5	●			

● Required Holes



Notes:

- ▲ Insert backset here 2", 2 1/2", 2 3/4", 3 3/4", 5", 6"
- ▲ Centerline of strike and front are the same.
- ▲ Prep for #8 wood or 8-32 machine screws .
- ▲ After the lock is installed and works properly. Pre-drill screw holes for the flush pulls. Then mount the flush pulls with the provided screws.

Additional Notes:

- a) **Responsibility:** Door and frame manufacturers are responsible for providing adequate construction or re-inforcement for proper installation of hardware shown.
- b) See catalog / spec sheets and template #T-ALH.2001SDL.LO for additional lock details

Standard 2001SDL- 24ST, 24SC and 24SE Flush Pulls- All Backsets

T-ALH.2001SDL.24S