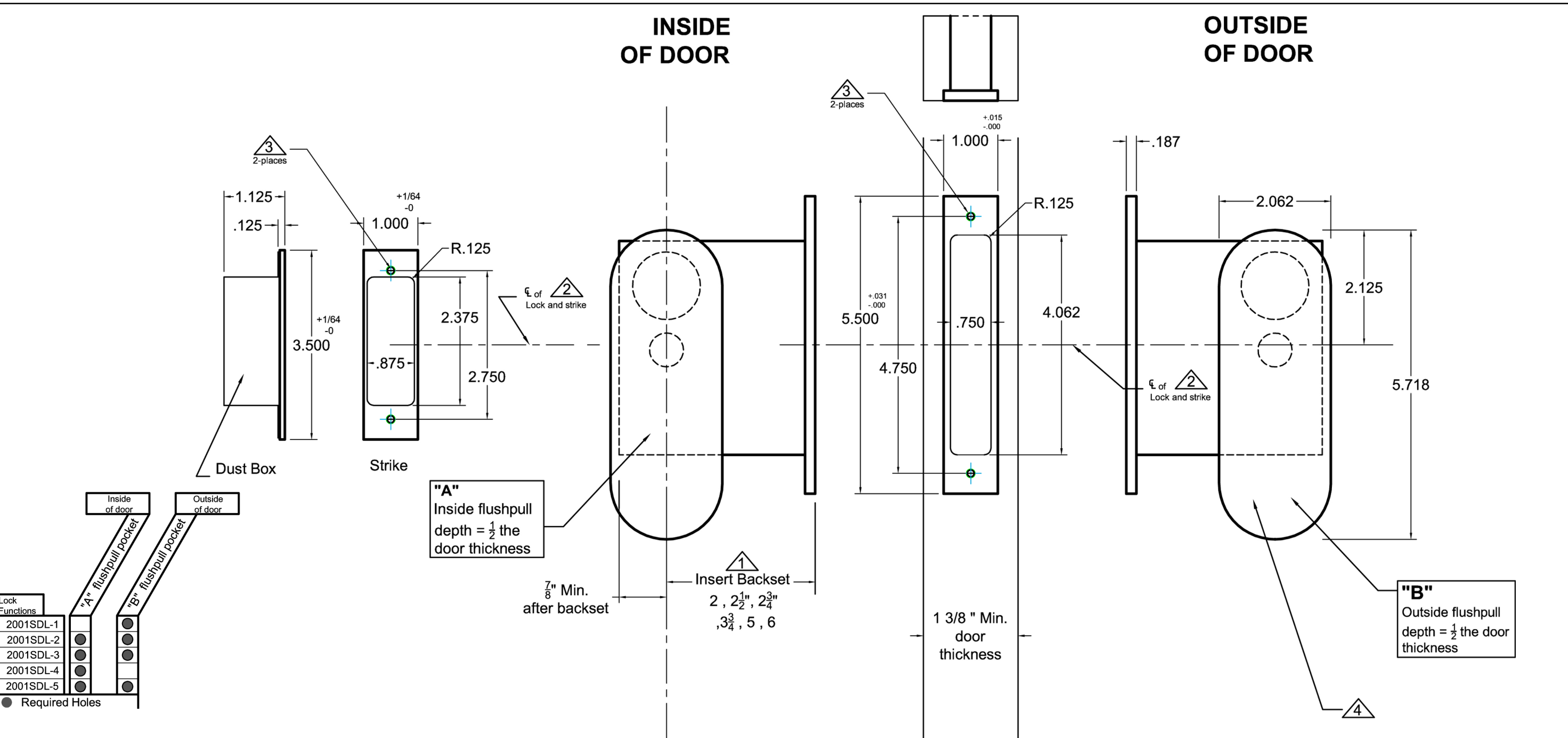


INSIDE OF DOOR

OUTSIDE OF DOOR



"A"
Inside flushpull
depth = $\frac{1}{2}$ the
door thickness

"B"
Outside flushpull
depth = $\frac{1}{2}$ the door
thickness

Notes:

- 1 Insert backset here 2", 2 $\frac{1}{2}$ ", 2 $\frac{3}{4}$ ", 3 $\frac{3}{4}$ ", 5", 6"
- 2 Centerline of strike and front are the same.
- 3 Prep for #8 wood or 8-32 machine screws.
- 4 After the lock is installed and works properly. Pre-drill screw holes for the flush pulls. Then mount the flush pulls with the provided screws.

Additional Notes:

- a) **Responsibility:** Door and frame manufacturers are responsible for providing adequate construction or re-inforcement for proper installation of hardware shown.
- b) See catalog / spec sheets and template #T-ALH.2001SDL.LO for additional lock details



Standard 2001SDL x A2002, O2002, N2002
or CA2002, CO2002, CN2002 Flush Pulls-
All Backsets

T-ALH.2001SDL.A