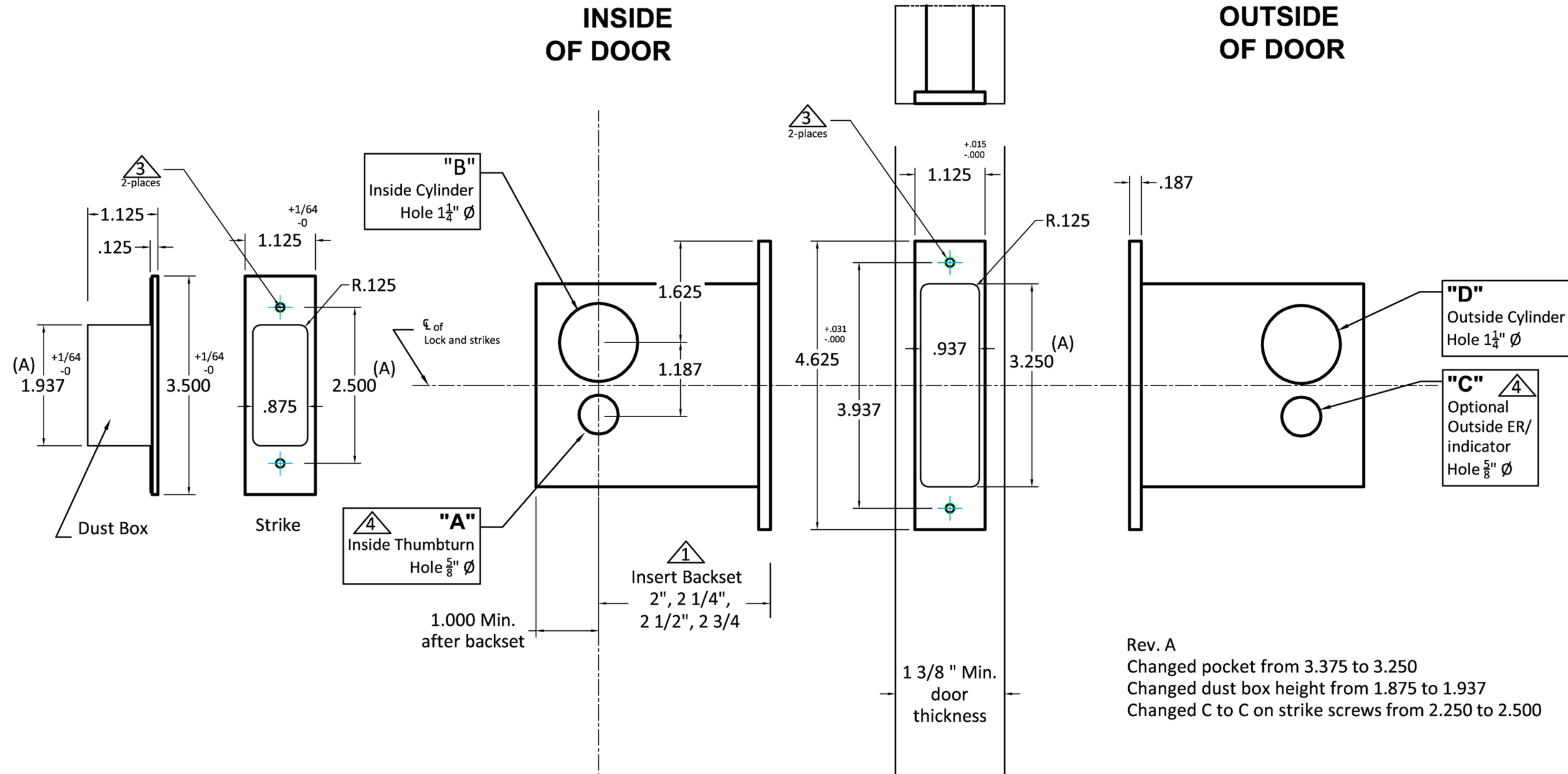


INSIDE OF DOOR

OUTSIDE OF DOOR



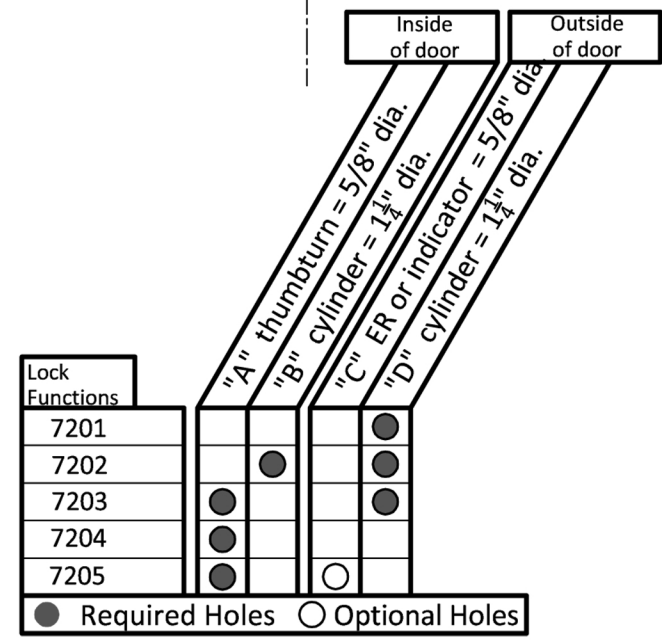
Rev. A
 Changed pocket from 3.375 to 3.250
 Changed dust box height from 1.875 to 1.937
 Changed C to C on strike screws from 2.250 to 2.500

Notes:

- ① Insert backset here 2", 2 1/4", 2 1/2", 2 3/4
- ② Centerline of strike and front are the same.
- ③ Prep for #8 wood or 8-32 machine screws.
- ④ Thumbturn and ER holes may vary from different trim manufacturers. Please refer to their templates to confirm these dimensions.

Additional Notes:

- a) **Responsibility:** Door and frame manufacturers are responsible for providing adequate construction or re-inforcement for proper installation of hardware shown.
- b) See catalog / spec sheets for additional lock details



| Lock Functions | 7201 | 7202 | 7203 | 7204 | 7205 |
|----------------|------|------|------|------|------|
| 7201 | ● | | | | |
| 7202 | | ● | | | |
| 7203 | ● | | | | |
| 7204 | ● | | | | |
| 7205 | ● | | | ○ | |

Standard 7200 Deadlock - LOCK ONLY - All Backsets

T-ALH.7200.DL